

Product datasheet

Anti-PLCXD3 antibody ab67821

1 References 1 图像

概述

产品名称	Anti-PLCXD3抗体
描述	小鼠多克隆抗体to PLCXD3
宿主	Mouse
经测试应用	适用于: WB
种属反应性	与反应: Human
免疫原	Full length PLCXD3 protein (Human)
阳性对照	PLCXD3 transfected 293T cell lysate

性能

形式	Liquid
存放说明	Shipped at 4°C. Upon delivery aliquot and store at -20°C or -80°C. Avoid repeated freeze / thaw cycles.
存储溶液	Preservative: None Constituents: PBS, pH 7.2
纯度	Protein A purified
克隆	多克隆
同种型	IgG

应用

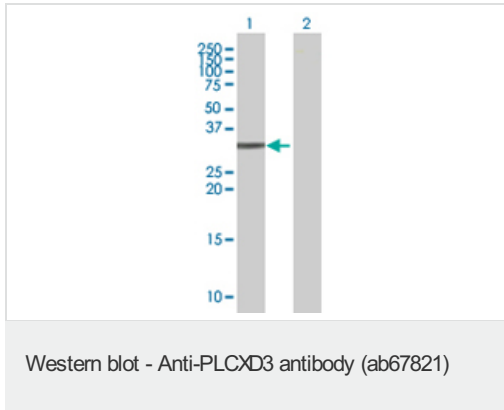
Our [Abpromise guarantee](#) covers the use of **ab67821** in the following tested applications.

The application notes include recommended starting dilutions; optimal dilutions/concentrations should be determined by the end user.

应用	Ab评论	说明
WB		1/500 - 1/1000. Detects a band of approximately 33 kDa (predicted molecular weight: 36 kDa).

靶标

图片



All lanes : Anti-PLCXD3 antibody (ab67821)
at 1/500 dilution

Lane 1 : PLCXD3 transfected 293T cell
lysate

Lane 2 : Non-transfected 293T cell lysate

Lysates/proteins at 25 µg per lane.

Secondary

All lanes : Goat Anti-Mouse IgG (H&L)-HRP
Conjugate at 1/2500 dilution

Predicted band size: 36 kDa

Observed band size: 33 kDa

Please note: All products are "FOR RESEARCH USE ONLY AND ARE NOT INTENDED FOR DIAGNOSTIC OR THERAPEUTIC USE"

Our Abpromise to you: Quality guaranteed and expert technical support

- Replacement or refund for products not performing as stated on the datasheet
- Valid for 12 months from date of delivery
- Response to your inquiry within 24 hours
- We provide support in Chinese, English, French, German, Japanese and Spanish
- Extensive multi-media technical resources to help you
- We investigate all quality concerns to ensure our products perform to the highest standards

If the product does not perform as described on this datasheet, we will offer a refund or replacement. For full details of the Abpromise, please visit <https://www.abcam.cn/abpromise> or contact our technical team.

Terms and conditions

- Guarantee only valid for products bought direct from Abcam or one of our authorized distributors