

Product datasheet

Anti-ZBTB26 antibody ab67556

1 图像

概述

产品名称	Anti-ZBTB26抗体
描述	小鼠多克隆抗体to ZBTB26
宿主	Mouse
经测试应用	适用于: ICC/IF, WB
种属反应性	与反应: Human
免疫原	Full length ZBTB26 protein (Human)
阳性对照	WB: ZBTB26 transfected 293T cell lysate. ICC/IF: HeLa cell.

性能

形式	Liquid
存放说明	Shipped at 4°C. Upon delivery aliquot and store at -20°C or -80°C. Avoid repeated freeze / thaw cycles.
存储溶液	Preservative: None Constituents: Whole serum
纯度	Whole antiserum
克隆	多克隆
同种型	IgG

应用

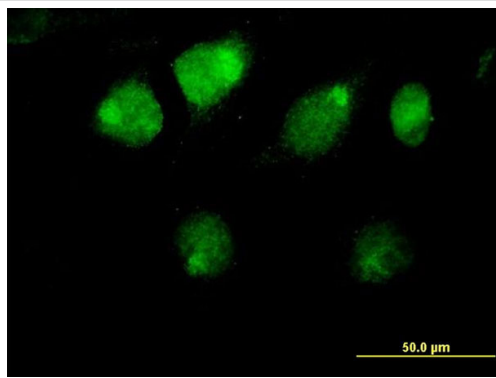
Our [Abpromise guarantee](#) covers the use of **ab67556** in the following tested applications.

The application notes include recommended starting dilutions; optimal dilutions/concentrations should be determined by the end user.

应用	Ab评论	说明
ICC/IF		Use a concentration of 10 µg/ml.
WB		1/500 - 1/1000. Detects a band of approximately 55 kDa (predicted molecular weight: 50 kDa).

靶标

图片



Immunofluorescence analysis of ZBTB26 expression in HeLa cell, using purified ab67556 at 10μg/ml

Immunocytochemistry/ Immunofluorescence - Anti-ZBTB26 antibody (ab67556)

Please note: All products are "FOR RESEARCH USE ONLY AND ARE NOT INTENDED FOR DIAGNOSTIC OR THERAPEUTIC USE"

Our Abpromise to you: Quality guaranteed and expert technical support

- Replacement or refund for products not performing as stated on the datasheet
- Valid for 12 months from date of delivery
- Response to your inquiry within 24 hours
- We provide support in Chinese, English, French, German, Japanese and Spanish
- Extensive multi-media technical resources to help you
- We investigate all quality concerns to ensure our products perform to the highest standards

If the product does not perform as described on this datasheet, we will offer a refund or replacement. For full details of the Abpromise, please visit <https://www.abcam.cn/abpromise> or contact our technical team.

Terms and conditions

- Guarantee only valid for products bought direct from Abcam or one of our authorized distributors