


## Product datasheet

# Anti-ATF7 antibody ab65064

1 References 1 图像

### 概述

产品名称	Anti-ATF7抗体
描述	兔多克隆抗体to ATF7
宿主	Rabbit
经测试应用	适用于: WB, ELISA
种属反应性	与反应: Human 预测可用于: Mouse 
免疫原	Synthetic peptide derived from an internal sequence of human ATF7
阳性对照	Extracts from HeLa and HuvEc cells

### 性能

形式	Liquid
存放说明	Shipped at 4°C. Store at -20°C. Stable for 12 months at -20°C.
存储溶液	Preservative: 0.02% Sodium Azide Constituents: 50% Glycerol, PBS (without Mg <sup>2+</sup> and Ca <sup>2+</sup> ), 150mM Sodium chloride, pH 7.4
纯度	Immunogen affinity purified
克隆	多克隆
同种型	IgG

### 应用

Our [Abpromise guarantee](#) covers the use of **ab65064** in the following tested applications.

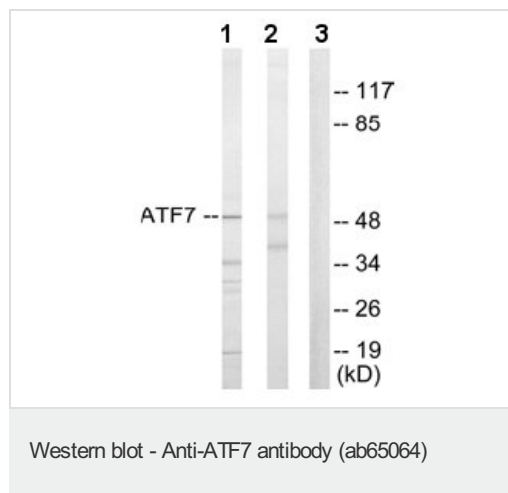
The application notes include recommended starting dilutions; optimal dilutions/concentrations should be determined by the end user.

应用	Ab评论	说明
WB		1/500 - 1/1000. Detects a band of approximately 53 kDa (predicted molecular weight: 53 kDa).
ELISA		1/20000.

## 靶标

<b>功能</b>	Plays important functions in early cell signaling. Binds the cAMP response element (CRE) (consensus: 5'-GTGACGT[AG][AG]-3'), a sequence present in many viral and cellular promoters. Activator of the NF-ELAM1/delta-A site of the E-selectin promoter. Has no intrinsic transcriptional activity, but activates transcription on formation of JUN or FOS heterodimers. Also can bind TRE promoter sequences when heterodimerized with members of the JUN family. Isoform 4/ATF-A0 acts as a dominant repressor of the E-selectin/NF-ELAM1/delta-A promoter.
<b>组织特异性</b>	Expressed in heart, lung and skeletal muscle. Isoform 4 is expressed in various tissues including heart, brain, placenta, lung and skeletal muscle. Highest levels in skeletal muscle. Lowest in lung and placenta.
<b>序列相似性</b>	Belongs to the bZIP family. Contains 1 bZIP domain. Contains 1 C2H2-type zinc finger.
<b>翻译后修饰</b>	On EGF stimulation, phosphorylated first on Thr-53 allowing subsequent phosphorylation on Thr-51. This latter phosphorylation prevents sumoylation, increases binding to TAF12 and enhances transcriptional activity. Sumoylation delays nuclear localization and inhibits transactivation activity through preventing binding to TAF12. RANBP2 appears to be the specific E3 ligase.
<b>细胞定位</b>	Nucleus. Nucleus > nucleoplasm. Mainly nucleoplasmic. Restricted distribution to the perinuclear region. The sumoylated form locates to the nuclear periphery.

## 图片



**All lanes :** Anti-ATF7 antibody (ab65064) at 1/500 dilution

**Lane 1 :** extracts from HeLa cells

**Lane 2 :** extracts from HuvEc cells

**Lane 3 :** extracts from HuvEc cells with immunizing peptide at 5 µg

Lysates/proteins at 5 µg per lane.

**Predicted band size:** 53 kDa

**Observed band size:** 53 kDa

**Please note:** All products are "FOR RESEARCH USE ONLY AND ARE NOT INTENDED FOR DIAGNOSTIC OR THERAPEUTIC USE"

## Our Abpromise to you: Quality guaranteed and expert technical support

- Replacement or refund for products not performing as stated on the datasheet
- Valid for 12 months from date of delivery
- Response to your inquiry within 24 hours
- We provide support in Chinese, English, French, German, Japanese and Spanish
- Extensive multi-media technical resources to help you

- We investigate all quality concerns to ensure our products perform to the highest standards

If the product does not perform as described on this datasheet, we will offer a refund or replacement. For full details of the Abpromise, please visit <https://www.abcam.cn/abpromise> or contact our technical team.

### **Terms and conditions**

---

- Guarantee only valid for products bought direct from Abcam or one of our authorized distributors