

Product datasheet

Anti-PPM1B antibody ab60242

1 图像

概述

产品名称	Anti-PPM1B抗体
描述	兔多克隆抗体to PPM1B
宿主	Rabbit
经测试应用	适用于: ELISA, IHC-P
种属反应性	与反应: Human
免疫原	Synthetic peptide selected from the Center region of human PPM1B conjugated to KLH
阳性对照	Human hepatocarcinoma tissue.

性能

形式	Liquid
存放说明	Shipped at 4°C. Store at +4°C short term (1-2 weeks). Upon delivery aliquot. Store at -20°C long term.
存储溶液	Preservative: 0.09% Sodium Azide Constituents: PBS
纯度	Ammonium Sulphate Precipitation
纯化说明	Prepared by Saturated Ammonium Sulphate (SAS) precipitation followed by dialysis against PBS.
克隆	多克隆
同种型	IgG

应用

Our [Abpromise guarantee](#) covers the use of **ab60242** in the following tested applications.

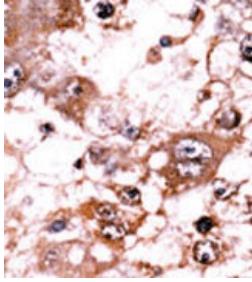
The application notes include recommended starting dilutions; optimal dilutions/concentrations should be determined by the end user.

应用	Ab评论	说明
ELISA		1/1000.
IHC-P		1/50 - 1/100.

靶标

功能	Enzyme with a broad specificity. Dephosphorylates CDK2 and CDK6 in vitro.
组织特异性	Highly expressed in heart and skeletal muscle.
序列相似性	Belongs to the PP2C family.

图片



ab60242 at 1/50 dilution, staining PPM1B in human hepatocarcinoma by Immunohistochemistry, Formalin fixed, Paraffin embedded tissue, followed by peroxidase conjugated secondary antibody and AEC staining.

Immunohistochemistry (Formalin/PFA-fixed paraffin-embedded sections) - Anti-PPM1B antibody (ab60242)

Please note: All products are "FOR RESEARCH USE ONLY AND ARE NOT INTENDED FOR DIAGNOSTIC OR THERAPEUTIC USE"

Our Abpromise to you: Quality guaranteed and expert technical support

- Replacement or refund for products not performing as stated on the datasheet
- Valid for 12 months from date of delivery
- Response to your inquiry within 24 hours
- We provide support in Chinese, English, French, German, Japanese and Spanish
- Extensive multi-media technical resources to help you
- We investigate all quality concerns to ensure our products perform to the highest standards

If the product does not perform as described on this datasheet, we will offer a refund or replacement. For full details of the Abpromise, please visit <https://www.abcam.cn/abpromise> or contact our technical team.

Terms and conditions

- Guarantee only valid for products bought direct from Abcam or one of our authorized distributors