

Product datasheet

Anti-POMT2 antibody ab57135

1 图像

概述

产品名称	Anti-POMT2抗体
描述	小鼠单克隆抗体to POMT2
宿主	Mouse
经测试应用	适用于: WB
种属反应性	与反应: Human
免疫原	Recombinant fragment: CVLGSSGKVL PKWGWEQLEV TCTPYLKETL NSMNVEDHI NPKLPNISLD VLQPSFPEIL LESHMVMIRG NSGLKPKDNE FTSKPWHWPI NYQGLRFS, corresponding to amino acids 483-581 of Human POMT2 Run BLAST with ExPASy Run BLAST with NCBI

性能

形式	Liquid
存放说明	Shipped at 4°C. Upon delivery aliquot and store at -20°C or -80°C. Avoid repeated freeze / thaw cycles.
存储溶液	Preservative: None PBS, pH 7.2
纯度	Protein G purified
克隆	单克隆
同种型	IgG2a
轻链类型	kappa

应用

Our [Abpromise guarantee](#) covers the use of **ab57135** in the following tested applications.

The application notes include recommended starting dilutions; optimal dilutions/concentrations should be determined by the end user.

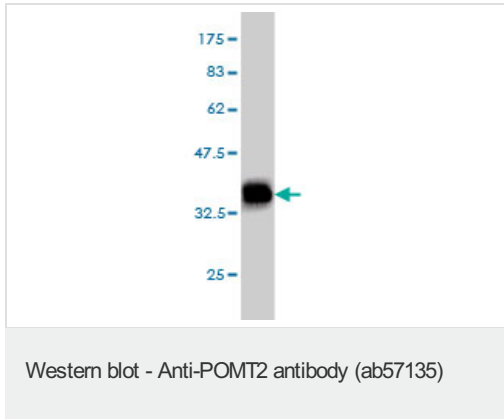
应用	Ab评论	说明

应用	Ab评论	说明
WB		Use a concentration of 1 - 5 µg/ml. This antibody has only been tested in WB against the recombinant fragment used as immunogen. We have no data on the detection of endogenous protein.

靶标

功能	Transfers mannosyl residues to the hydroxyl group of serine or threonine residues. Coexpression of both POMT1 and POMT2 is necessary for enzyme activity, expression of either POMT1 or POMT2 alone is insufficient.
组织特异性	Highly expressed in testis; detected at low levels in most tissues.
通路	Protein modification; protein glycosylation.
疾病相关	Muscular dystrophy-dystroglycanopathy congenital with brain and eye anomalies A2 (MDDGA2) [MIM:613150]: An autosomal recessive disorder characterized by congenital muscular dystrophy associated with cobblestone lissencephaly and other brain anomalies, eye malformations, profound mental retardation, and death usually in the first years of life. Included diseases are the more severe Walker-Warburg syndrome and the slightly less severe muscle-eye-brain disease. Note=The disease is caused by mutations affecting the gene represented in this entry. Muscular dystrophy-dystroglycanopathy congenital with mental retardation B2 (MDDGB2) [MIM:613156]: An autosomal recessive disorder characterized by congenital muscular dystrophy associated with mental retardation and mild structural brain abnormalities. Note=The disease is caused by mutations affecting the gene represented in this entry. Muscular dystrophy-dystroglycanopathy limb-girdle C2 (MDDGC2) [MIM:613158]: An autosomal recessive muscular dystrophy with onset after ambulation is achieved. MDDGC2 is characterized by increased serum creatine kinase and mild muscle weakness. Muscle biopsy shows dystrophic changes, inflammatory changes, and severely decreased alpha-dystroglycan. Cognition is normal. Note=The disease is caused by mutations affecting the gene represented in this entry.
序列相似性	Belongs to the glycosyltransferase 39 family. Contains 3 MIR domains.
翻译后修饰	N-glycosylated.
细胞定位	Endoplasmic reticulum membrane.

图片



Western blot against tagged recombinant protein immunogen using ab57135 POMT2 antibody at 1ug/ml. Predicted band size of immunogen is 37 kDa

Please note: All products are "FOR RESEARCH USE ONLY AND ARE NOT INTENDED FOR DIAGNOSTIC OR THERAPEUTIC USE"

Our Abpromise to you: Quality guaranteed and expert technical support

- Replacement or refund for products not performing as stated on the datasheet
- Valid for 12 months from date of delivery
- Response to your inquiry within 24 hours
- We provide support in Chinese, English, French, German, Japanese and Spanish
- Extensive multi-media technical resources to help you
- We investigate all quality concerns to ensure our products perform to the highest standards

If the product does not perform as described on this datasheet, we will offer a refund or replacement. For full details of the Abpromise, please visit <https://www.abcam.cn/abpromise> or contact our technical team.

Terms and conditions

- Guarantee only valid for products bought direct from Abcam or one of our authorized distributors