

Product datasheet

Anti-BCL7B antibody ab56515

1 图像

概述

产品名称	Anti-BCL7B抗体
描述	小鼠单克隆抗体to BCL7B
宿主	Mouse
经测试应用	适用于: WB
种属反应性	与反应: Human
免疫原	Recombinant fragment: AHTSDFRTDD SQPPTLGQEI LEEPSLPSSSE VADEPPTLTK EEPVPLETQV VEEEEEDSGAP PLKRFCVDQP TVPQTASES, corresponding to amino acids 124-203 of Human BCL7B Run BLAST with ExPASy Run BLAST with NCBI

性能

形式	Liquid
存放说明	Shipped at 4°C. Upon delivery aliquot and store at -20°C or -80°C. Avoid repeated freeze / thaw cycles.
存储溶液	Preservative: None PBS, pH 7.2
纯度	Protein G purified
克隆	单克隆
同种型	IgG1
轻链类型	kappa

应用

Our [Abpromise guarantee](#) covers the use of **ab56515** in the following tested applications.

The application notes include recommended starting dilutions; optimal dilutions/concentrations should be determined by the end user.

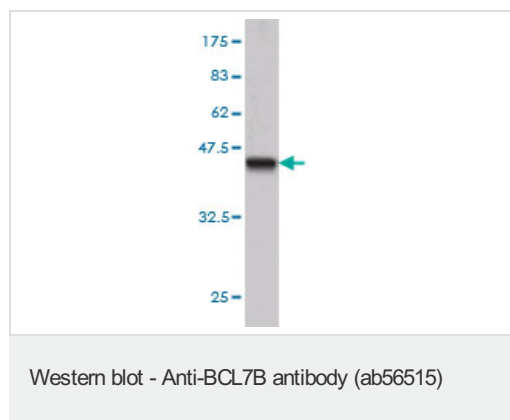
应用	Ab评论	说明

应用	Ab评论	说明
WB		Use a concentration of 1 - 5 µg/ml. This antibody has only been tested in WB against the recombinant fragment used as immunogen. We have no data on the detection of endogenous protein.

靶标

功能	May play a role in lung tumor development or progression.
组织特异性	Ubiquitous.
疾病相关	Note=BCL7B is located in the Williams-Beuren syndrome (WBS) critical region. WBS results from a hemizygous deletion of several genes on chromosome 7q11.23, thought to arise as a consequence of unequal crossing over between highly homologous low-copy repeat sequences flanking the deleted region. Haploinsufficiency of BCL7B may be the cause of certain cardiovascular and musculo-skeletal abnormalities observed in the disease.
序列相似性	Belongs to the BCL7 family.

图片



Western blot against tagged recombinant protein immunogen using ab56515 BCL7B antibody at 1µg/ml. Predicted band size of immunogen is 35 kDa

Please note: All products are "FOR RESEARCH USE ONLY AND ARE NOT INTENDED FOR DIAGNOSTIC OR THERAPEUTIC USE"

Our Abpromise to you: Quality guaranteed and expert technical support

- Replacement or refund for products not performing as stated on the datasheet
- Valid for 12 months from date of delivery
- Response to your inquiry within 24 hours
- We provide support in Chinese, English, French, German, Japanese and Spanish
- Extensive multi-media technical resources to help you
- We investigate all quality concerns to ensure our products perform to the highest standards

If the product does not perform as described on this datasheet, we will offer a refund or replacement. For full details of the Abpromise, please visit <https://www.abcam.cn/abpromise> or contact our technical team.

Terms and conditions

- Guarantee only valid for products bought direct from Abcam or one of our authorized distributors