

Product datasheet

Anti-LIM Kinase 1 antibody ab55414

1 References 2 图像

概述

产品名称	Anti-LIM Kinase 1抗体
描述	小鼠单克隆抗体to LIM Kinase 1
宿主	Mouse
经测试应用	适用于: WB, IHC-P
种属反应性	与反应: Human
免疫原	Recombinant fragment: ADPDYLPRTM DFGLNVRGFL DRYCPPNCP SFFPITVRCC DLDPEKRPSF VKLEHWLETL RMHLAGHLPL GPQLEQLDRG FWETYRRGES GLPAHPEVPD , corresponding to amino acids 548-648 of Human LIM Kinase 1 Run BLAST with ExPASy Run BLAST with NCBI

性能

形式	Liquid
存放说明	Shipped at 4°C. Upon delivery aliquot and store at -20°C or -80°C. Avoid repeated freeze / thaw cycles.
存储溶液	Preservative: None PBS, pH 7.2
纯度	Protein G purified
克隆	单克隆
同种型	IgG2a
轻链类型	kappa

应用

Our [Abpromise guarantee](#) covers the use of **ab55414** in the following tested applications.

The application notes include recommended starting dilutions; optimal dilutions/concentrations should be determined by the end user.

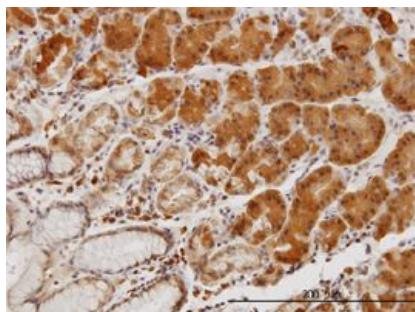
应用	Ab评论	说明
WB		Use a concentration of 1 - 5 µg/ml. Predicted molecular weight: 73 kDa.

应用	Ab评论	说明
IHC-P		Use a concentration of 3 µg/ml.

靶标

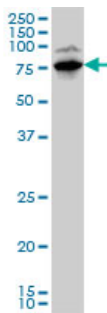
功能	Protein kinase which regulates actin filament dynamics. Phosphorylates and inactivates the actin binding/depolymerizing factor cofilin, thereby stabilizing the actin cytoskeleton. Stimulates axonal outgrowth and may be involved in brain development. Isoform 3 has a dominant negative effect on actin cytoskeletal changes.
组织特异性	Highest expression in both adult and fetal nervous system. Detected ubiquitously throughout the different regions of adult brain, with highest levels in the cerebral cortex. Expressed to a lesser extent in heart and skeletal muscle.
疾病相关	Note=LIMK1 is located in the Williams-Beuren syndrome (WBS) critical region. WBS results from a hemizygous deletion of several genes on chromosome 7q11.23, thought to arise as a consequence of unequal crossing over between highly homologous low-copy repeat sequences flanking the deleted region.
序列相似性	Belongs to the protein kinase superfamily. TKL Ser/Thr protein kinase family. Contains 2 LIM zinc-binding domains. Contains 1 PDZ (DHR) domain. Contains 1 protein kinase domain.
翻译后修饰	Autophosphorylated. Phosphorylated on serine and/or threonine residues by ROCK1. May be dephosphorylated and inactivated by SSH1. Ubiquitinated. 'Lys-48'-linked polyubiquitination by RNF6 leads to proteasomal degradation through the 26S proteasome, modulating LIMK1 levels in the growth cone and its effect on axonal outgrowth. Also polyubiquitinated by RLIM.
细胞定位	Cytoplasm. Cell projection > growth cone.

图片



LIM Kinase 1 antibody (ab55414) used in immunohistochemistry at 3µg/ml on formalin fixed and paraffin embedded human stomach.

Immunohistochemistry (Formalin/PFA-fixed paraffin-embedded sections) - Anti-LIM Kinase 1 antibody (ab55414)



LIM Kinase 1 antibody (ab55414) at 1ug/lane
+ HepG2 cell lysate at 25ug/lane.

Western blot - Anti-LIM Kinase 1 antibody (ab55414)

Please note: All products are "FOR RESEARCH USE ONLY AND ARE NOT INTENDED FOR DIAGNOSTIC OR THERAPEUTIC USE"

Our Abpromise to you: Quality guaranteed and expert technical support

- Replacement or refund for products not performing as stated on the datasheet
- Valid for 12 months from date of delivery
- Response to your inquiry within 24 hours
- We provide support in Chinese, English, French, German, Japanese and Spanish
- Extensive multi-media technical resources to help you
- We investigate all quality concerns to ensure our products perform to the highest standards

If the product does not perform as described on this datasheet, we will offer a refund or replacement. For full details of the Abpromise, please visit <https://www.abcam.cn/abpromise> or contact our technical team.

Terms and conditions

- Guarantee only valid for products bought direct from Abcam or one of our authorized distributors