

Product datasheet

Anti-ASH2L antibody [2046D2a] ab50699

★★★★☆ 2 Abreviews 5 References 5 图像

概述

产品名称	Anti-ASH2L抗体[2046D2a]
描述	小鼠单克隆抗体[2046D2a] to ASH2L
宿主	Mouse
经测试应用	适用于: Flow Cyt, WB, ICC, Dot blot
种属反应性	与反应: Mouse, Rat, Human
免疫原	Recombinant fragment
阳性对照	WB: HeLa, NIH3T3 or F2408 whole cell lysate. ICC/IF: HeLa cells.
常规说明	Abcam is committed to meeting high standards of ethical manufacturing and as such, we will be discontinuing this product, which has been generated by the ascites method, within the next year. We are sorry for any inconvenience this may cause. If you would like help finding an alternative product, please do not hesitate to contact our scientific support team.

性能

形式	Liquid
存放说明	Shipped at 4°C. Store at 4°C (stable for up to 12 months). Store at -20°C or -80°C.
存储溶液	Preservative: 0.05% Sodium Azide Constituents: 1% BSA, PBS, pH 7.4
纯度	Protein G purified
克隆	单克隆
克隆编号	2046D2a
同种型	IgG1

应用

Our [Abpromise guarantee](#) covers the use of **ab50699** in the following tested applications.

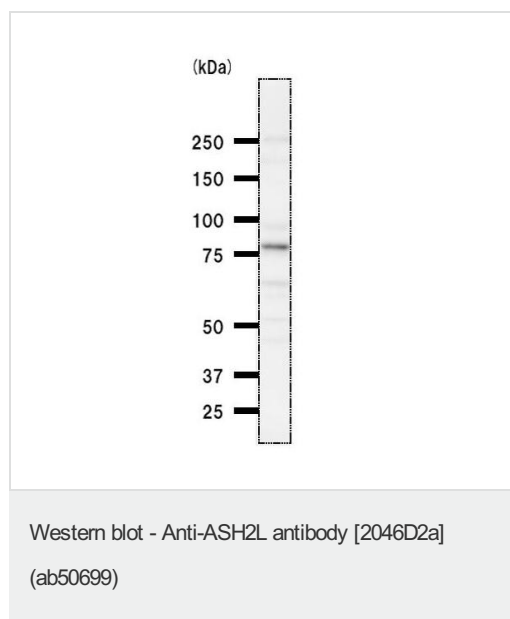
The application notes include recommended starting dilutions; optimal dilutions/concentrations should be determined by the end user.

应用	Ab评论	说明
Flow Cyt		Use 1µg for 10 ⁶ cells. ab170190 - Mouse monoclonal IgG1, is suitable for use as an isotype control with this antibody.
WB	★★★★★	1/50. Detects a band of approximately 75-76 kDa (predicted molecular weight: 69 kDa).
ICC		1/5.
Dot blot		Use at an assay dependent concentration.

靶标

功能	Component of the Set1/Ash2 histone methyltransferase (HMT) complex, a complex that specifically methylates 'Lys-4' of histone H3, but not if the neighboring 'Lys-9' residue is already methylated. As part of the MLL1/MLL complex it is involved in methylation and dimethylation at 'Lys-4' of histone H3. May function as a transcriptional regulator. May play a role in hematopoiesis.
组织特异性	Ubiquitously expressed. Predominantly expressed in adult heart and testis and fetal lung and liver, with barely detectable expression in adult lung, liver, kidney, prostate, and peripheral leukocytes.
序列相似性	Contains 1 B30.2/SPRY domain.
细胞定位	Nucleus.

图片



Anti-ASH2L antibody [2046D2a] (ab50699) at 1/50 dilution + HeLa whole cell lysate at 25 µg

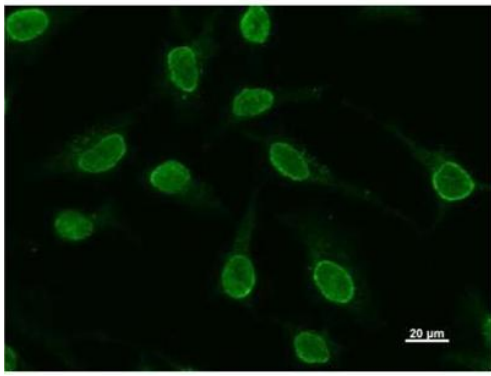
Secondary

Mouse IgG antibody at 1/2500 dilution

Developed using the ECL technique.

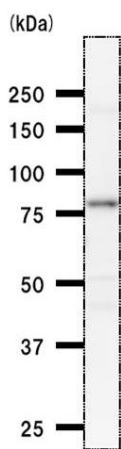
Predicted band size: 69 kDa

Observed band size: 76 kDa



Immunocytochemistry - Anti-ASH2L antibody
[2046D2a] (ab50699)

HeLa cells labelled with ab50699 at 1/5 dilution. Secondary antibody: Alexa 488 Goat Anti-Mouse IgG at 1/200.



Western blot - Anti-ASH2L antibody [2046D2a]
(ab50699)

Anti-ASH2L antibody [2046D2a] (ab50699) at 1/100 dilution + NIH3T3 whole cell lysate at 25 μ g

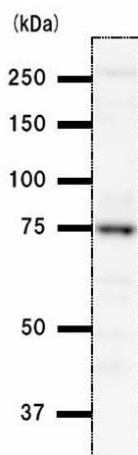
Secondary

Mouse IgG antibody at 1/2500 dilution

Developed using the ECL technique.

Predicted band size: 69 kDa

Observed band size: 76 kDa



Western blot - Anti-ASH2L antibody [2046D2a]
(ab50699)

Anti-ASH2L antibody [2046D2a] (ab50699) at 1/50 dilution + F2408 whole cell lysate at 50 μ g

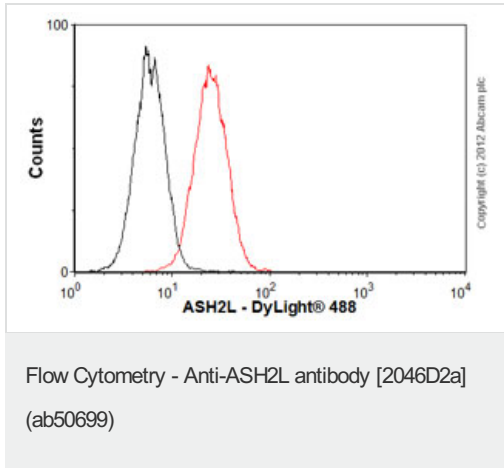
Secondary

Mouse IgG antibody at 1/2500 dilution

Developed using the ECL technique.

Predicted band size: 69 kDa

Observed band size: 75 kDa



Overlay histogram showing HeLa cells stained with ab50699 (red line). The cells were fixed with 80% methanol (5 min) and then permeabilized with 0.1% PBS-Tween for 20 min. The cells were then incubated in 1x PBS / 10% normal goat serum / 0.3M glycine to block non-specific protein-protein interactions followed by the antibody (ab50699, 1µg/1x10⁶ cells) for 30 min at 22°C. The secondary antibody used was DyLight® 488 goat anti-mouse IgG (H+L) (ab96879) at 1/500 dilution for 30 min at 22°C. Isotype control antibody (black line) was mouse IgG1 [CIGG1] (ab91353, 2µg/1x10⁶ cells) used under the same conditions. Acquisition of >5,000 events was performed.

Please note: All products are "FOR RESEARCH USE ONLY AND ARE NOT INTENDED FOR DIAGNOSTIC OR THERAPEUTIC USE"

Our Abpromise to you: Quality guaranteed and expert technical support

- Replacement or refund for products not performing as stated on the datasheet
- Valid for 12 months from date of delivery
- Response to your inquiry within 24 hours
- We provide support in Chinese, English, French, German, Japanese and Spanish
- Extensive multi-media technical resources to help you
- We investigate all quality concerns to ensure our products perform to the highest standards

If the product does not perform as described on this datasheet, we will offer a refund or replacement. For full details of the Abpromise, please visit <https://www.abcam.cn/abpromise> or contact our technical team.

Terms and conditions

- Guarantee only valid for products bought direct from Abcam or one of our authorized distributors