


Product datasheet

Anti-GABPB2 antibody ab48954

4 图像

概述

产品名称	Anti-GABPB2抗体
描述	兔多克隆抗体to GABPB2
宿主	Rabbit
特异性	This antibody recognizes GABPB2
经测试应用	适用于: WB
种属反应性	与反应: Human 预测可用于: Mouse, Rat, Chicken, Cow, Dog 
免疫原	A region within synthetic peptide: IPTSGIGQPI IVTMPDGQQV LTVPATDIAE ETVISEEPPA KRQCIEIEN, corresponding to internal sequence amino acids 288-337 of Human GABPB2 Run BLAST with ExPASy Run BLAST with NCBI
阳性对照	<div style="border: 1px solid #ccc; padding: 5px; display: inline-block; text-align: center;"> 购买相配的WB阳性对照 Recombinant Human GABPB2 protein > </div> HepG2 cell lysate

性能

形式	Liquid
存放说明	Shipped at 4°C. Upon delivery aliquot and store at -20°C. Avoid freeze / thaw cycles.
存储溶液	Preservative: None Constituents: 2% Sucrose, PBS
纯度	Immunogen affinity purified
克隆	多克隆
同种型	IgG

应用

Our [Abpromise guarantee](#) covers the use of **ab48954** in the following tested applications.

The application notes include recommended starting dilutions; optimal dilutions/concentrations should be determined by the end user.

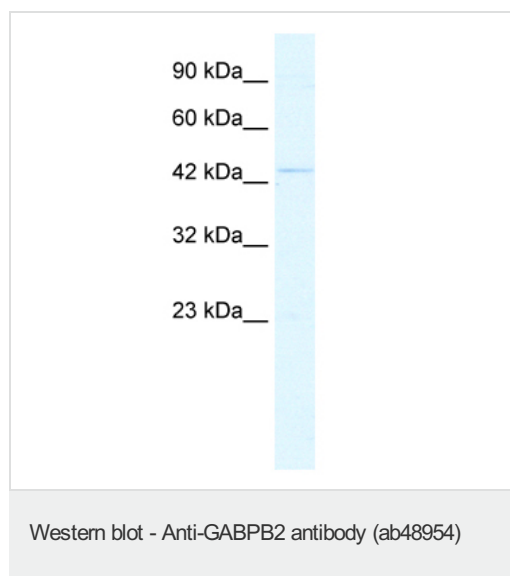
应用	Ab 评论	说明
----	-------	----

WB Use a concentration of 1.25 µg/ml. Detects a band of approximately 45 kDa (predicted molecular weight: 42 kDa). Good results were obtained when blocked with 5% non-fat dry milk in 0.05% PBS-T.

靶标

功能 May function as transcription factor capable of interacting with purine rich repeats (GA repeats).
序列相似性 Contains 5 ANK repeats.
细胞定位 Nucleus.

图片



Anti-GABPB2 antibody (ab48954) at 1.25 µg/ml + HepG2 cell lysate at 10 µg with 5% skimmed milk in PBS.

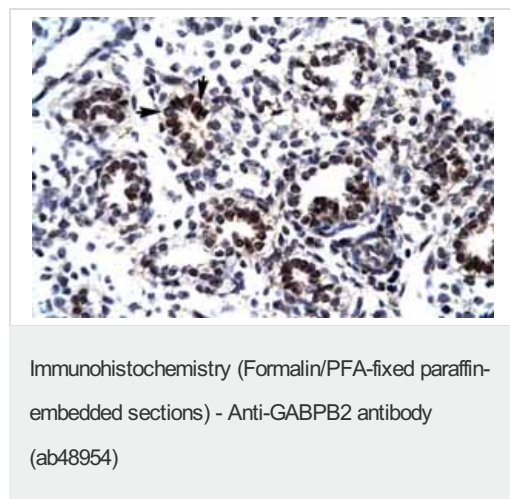
Secondary

HRP conjugated anti-Rabbit IgG at 1/50000 dilution

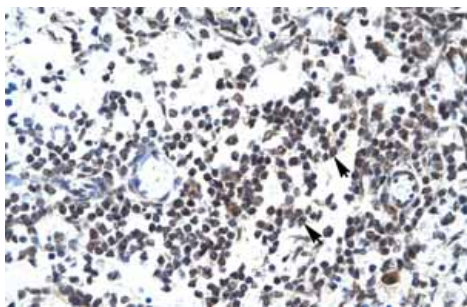
Predicted band size: 42 kDa

Observed band size: 45 kDa

Gel concentration: 12%

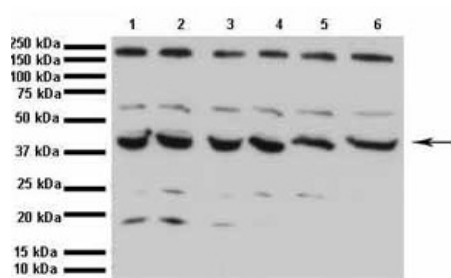


Immunohistochemistry of Human Lung lysate tissue at an antibody concentration of 4-8 µg/ml using anti-GABPB2 antibody (ab48954)



Immunohistochemistry of Human Spleen lysate tissue at an antibody concentration of 4-8 µg/ml using anti-GABPB2 antibody (ab48954)

Immunohistochemistry (Formalin/PFA-fixed paraffin-embedded sections) - Anti-GABPB2 antibody (ab48954)



All lanes : Anti-GABPB2 antibody (ab48954) at 1 µg/ml

All lanes : Human HK2 cell (kidney proximal tubular cell line)

Predicted band size: 42 kDa

Western blot - Anti-GABPB2 antibody (ab48954)

WB Suggested Anti-GABPB2 antibody (ab48954) Titration: 1 µg/ml Positive Control: Human HK2 cell (kidney proximal tubular cell line)

Please note: All products are "FOR RESEARCH USE ONLY AND ARE NOT INTENDED FOR DIAGNOSTIC OR THERAPEUTIC USE"

Our Abpromise to you: Quality guaranteed and expert technical support

- Replacement or refund for products not performing as stated on the datasheet
- Valid for 12 months from date of delivery
- Response to your inquiry within 24 hours
- We provide support in Chinese, English, French, German, Japanese and Spanish
- Extensive multi-media technical resources to help you
- We investigate all quality concerns to ensure our products perform to the highest standards

If the product does not perform as described on this datasheet, we will offer a refund or replacement. For full details of the Abpromise, please visit <https://www.abcam.cn/abpromise> or contact our technical team.

Terms and conditions

-
- Guarantee only valid for products bought direct from Abcam or one of our authorized distributors