

Product datasheet

Anti-Smac / Diablo antibody ab23450

2 图像

概述

产品名称	Anti-Smac / Diablo抗体
描述	兔多克隆抗体to Smac / Diablo
宿主	Rabbit
经测试应用	适用于: ELISA, WB, IHC-P
种属反应性	与反应: Rabbit, Human 预测可用于: Cow, Dog, Pig
免疫原	A region within synthetic peptide: LQVEEVHQLS RKAETKLAEA QIEELRQKTQ EEGEERAESE QEAYLRED, corresponding to C terminal amino acids 139-186 of Human Smac/ Diablo Run BLAST with ExPASy Run BLAST with NCBI
阳性对照	HepG2 cell lysate for WB. Paraffin embedded human kidney tissue for IHC.

性能

形式	Liquid
存放说明	Shipped at 4°C. Store at +4°C short term (1-2 weeks). Upon delivery aliquot. Store at -20°C or -80°C. Avoid freeze / thaw cycle.
存储溶液	Preservative: None Constituents: 2% Sucrose, PBS
纯度	Immunogen affinity purified
纯化说明	The antibody was purified by affinity chromatography.
克隆	多克隆
同种型	IgG

应用

Our [Abpromise guarantee](#) covers the use of **ab23450** in the following tested applications.

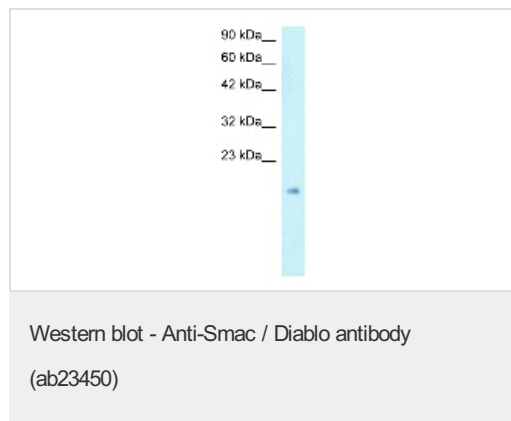
The application notes include recommended starting dilutions; optimal dilutions/concentrations should be determined by the end user.

应用	Ab 评论	说明
ELISA		1/15000.
WB		Use a concentration of 1 - 1.25 µg/ml. Predicted molecular weight: 27 kDa. Good results were obtained when blocked with 5% non-fat dry milk in 0.05% PBS-T.
IHC-P		Use a concentration of 4 - 8 µg/ml.

靶标

功能	Promotes apoptosis by activating caspases in the cytochrome c/Apaf-1/caspase-9 pathway. Acts by opposing the inhibitory activity of inhibitor of apoptosis proteins (IAP).
组织特异性	Ubiquitously expressed with highest expression in testis. Expression is also high in heart, liver, kidney, spleen, prostate and ovary. Low in brain, lung, thymus and peripheral blood leukocytes.
结构域	The mature N-terminus mediates interaction with XIAP.
细胞定位	Mitochondrion. Released into the cytosol when cells undergo apoptosis.

图片



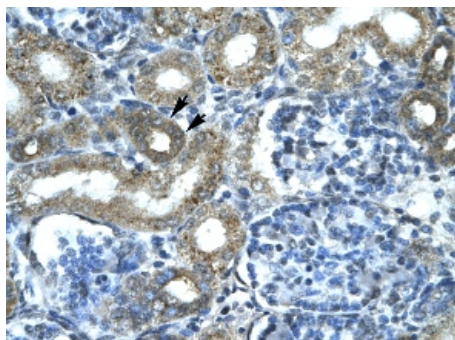
Anti-Smac / Diablo antibody (ab23450) at 1 µg/ml + HepG2 lysate

Secondary

HRP conjugated anti-Rabbit IgG (1: 50,000-100,000)

Predicted band size: 27 kDa

Observed band size: 14 kDa



ab23450 at 4-8 ug/ml staining human Smac in kidney cells by immunohistochemistry (Paraffin embedded tissue). Epithelial cells of renal tubule (indicated with arrows). Magnification 400x.

Immunohistochemistry (Formalin/PFA-fixed paraffin-embedded sections) - Anti-Smac / Diablo antibody (ab23450)

Please note: All products are "FOR RESEARCH USE ONLY AND ARE NOT INTENDED FOR DIAGNOSTIC OR THERAPEUTIC USE"

Our Abpromise to you: Quality guaranteed and expert technical support

- Replacement or refund for products not performing as stated on the datasheet
- Valid for 12 months from date of delivery
- Response to your inquiry within 24 hours
- We provide support in Chinese, English, French, German, Japanese and Spanish
- Extensive multi-media technical resources to help you
- We investigate all quality concerns to ensure our products perform to the highest standards

If the product does not perform as described on this datasheet, we will offer a refund or replacement. For full details of the Abpromise, please visit <https://www.abcam.cn/abpromise> or contact our technical team.

Terms and conditions

- Guarantee only valid for products bought direct from Abcam or one of our authorized distributors