

Product datasheet

Anti-Bacillus anthracis lethal factor antibody ab13806

1 图像

概述

产品名称	Anti-Bacillus anthracis lethal factor抗体
描述	兔多克隆抗体to Bacillus anthracis lethal factor
宿主	Rabbit
特异性	The antibody has been tested against recombinant protein only (0.1 ug recombinant protein was loaded per lane).
经测试应用	适用于: WB
种属反应性	Anthrax LF (Lethal Factor) produced by Bacillus anthracis
免疫原	Synthetic peptide corresponding to amino acids 290-306 of Anthrax LF
阳性对照	0.1 ug recombinant protein

性能

形式	Liquid
存放说明	Shipped at 4°C. Store at +4°C short term (1-2 weeks). Upon delivery aliquot. Store at -20°C or -80°C. Avoid freeze / thaw cycle.
存储溶液	Preservative: 0.05% Sodium Azide Constituents: PBS, 0.2% gelatin
纯度	Whole antiserum
克隆	多克隆
同种型	IgG

应用

Our [Abpromise guarantee](#) covers the use of **ab13806** in the following tested applications.

The application notes include recommended starting dilutions; optimal dilutions/concentrations should be determined by the end user.

应用	Ab评论	说明
WB		1/1000. Detects a band of approximately 90 kDa.

靶标

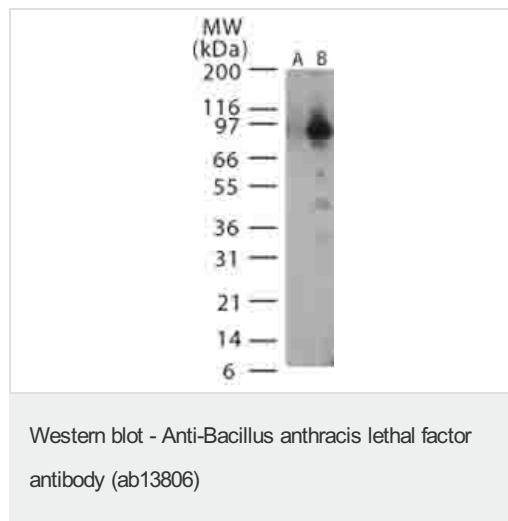
相关性

The protease enzyme Lethal Factor (LF) is one of the three proteins (LF, EF & PA) composing the anthrax toxin produced by *Bacillus anthracis*, a bacteria which can infect many mammalian species and that may be fatal. LF is not toxic by itself, but when associated with Protective Antigen (PA), can then gain entry to cells. Once inside the cell, LF then cleaves the N terminal of most dual specificity mitogen activated protein kinase kinases (MAPKKs or MAP2Ks) (except for MAP2K5). Cleavage invariably occurs within the N terminal proline rich region preceding the kinase domain, thus disrupting a sequence involved in directing specific protein protein interactions necessary for the assembly of signaling complexes. There may be other cytosolic targets of LF involved in cytotoxicity. The proteasome may mediate a toxic process initiated by LF in the cell cytosol involving degradation of unidentified molecules that are essential for macrophage homeostasis. This is an early step in LF intoxication, but it is downstream of the cleavage by LF of MEK1 or other putative substrates.

细胞定位

secreted

图片



Western blot analysis of Anthrax LF in recombinant protein using ab13806 (lane B) at 1:1000 dilution. Lane A shows the pre-bleed.

Please note: All products are "FOR RESEARCH USE ONLY AND ARE NOT INTENDED FOR DIAGNOSTIC OR THERAPEUTIC USE"

Our Abpromise to you: Quality guaranteed and expert technical support

- Replacement or refund for products not performing as stated on the datasheet
- Valid for 12 months from date of delivery
- Response to your inquiry within 24 hours
- We provide support in Chinese, English, French, German, Japanese and Spanish
- Extensive multi-media technical resources to help you
- We investigate all quality concerns to ensure our products perform to the highest standards

If the product does not perform as described on this datasheet, we will offer a refund or replacement. For full details of the Abpromise, please visit <https://www.abcam.cn/abpromise> or contact our technical team.

Terms and conditions

- Guarantee only valid for products bought direct from Abcam or one of our authorized distributors