

Product datasheet

Anti-DPEP2 antibody ab125516

1 图像

概述

产品名称	Anti-DPEP2抗体
描述	兔多克隆抗体to DPEP2
宿主	Rabbit
经测试应用	适用于: WB
种属反应性	与反应: Human 预测可用于: Dog
免疫原	Synthetic peptide corresponding to a region within C terminal amino acids 401-450 (EKVQEENKWQ SPLEDKFPDE QLSSSCHSDL SRLRQRQSLT SGQELTEIPI) of Human DPEP2 (NP_071750). Run BLAST with ExPASy Run BLAST with NCBI
阳性对照	THP1 cell lysate.

性能

形式	Liquid
存放说明	Shipped at 4°C. Upon delivery aliquot and store at -20°C. Avoid freeze / thaw cycles.
存储溶液	Constituents: 97% PBS, 2% Sucrose
纯度	Immunogen affinity purified
克隆	多克隆
同种型	IgG

应用

Our [Abpromise guarantee](#) covers the use of **ab125516** in the following tested applications.

The application notes include recommended starting dilutions; optimal dilutions/concentrations should be determined by the end user.

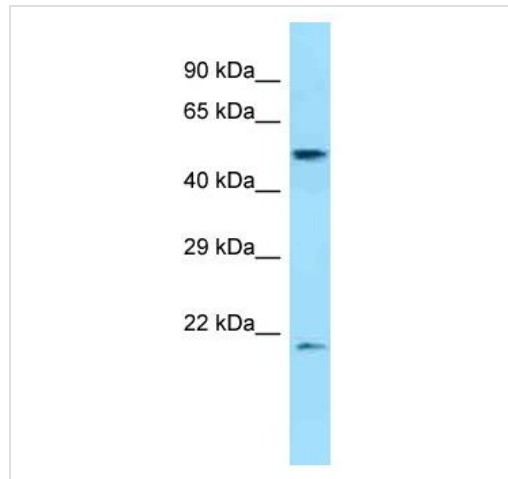
应用	Ab评论	说明
WB		Use a concentration of 1 µg/ml. Predicted molecular weight: 53 kDa. Good results were obtained when blocked with 5% non-fat dry milk in 0.05% PBS-T.

靶标

相关性 DPEP2 belongs to the membrane-bound dipeptidase family. It is a probable metalloprotease which hydrolyzes leukotriene D4 (LTD4) into leukotriene E4 (LTE4).

细胞定位 Membrane; Lipid-anchor, GPI-anchor.

图片



Western blot - Anti-DPEP2 antibody (ab125516)

Anti-DPEP2 antibody (ab125516) at 1 μ g/ml +
THP1 cell lysate at 10 μ g

Secondary

Goat anti-Rabbit IgG-HRP

Predicted band size: 53 kDa

Please note: All products are "FOR RESEARCH USE ONLY AND ARE NOT INTENDED FOR DIAGNOSTIC OR THERAPEUTIC USE"

Our Abpromise to you: Quality guaranteed and expert technical support

- Replacement or refund for products not performing as stated on the datasheet
- Valid for 12 months from date of delivery
- Response to your inquiry within 24 hours
- We provide support in Chinese, English, French, German, Japanese and Spanish
- Extensive multi-media technical resources to help you
- We investigate all quality concerns to ensure our products perform to the highest standards

If the product does not perform as described on this datasheet, we will offer a refund or replacement. For full details of the Abpromise, please visit <https://www.abcam.cn/abpromise> or contact our technical team.

Terms and conditions

- Guarantee only valid for products bought direct from Abcam or one of our authorized distributors