

## Product datasheet

# Anti-PIP4K2 alpha antibody [3A3] ab125107

敲除 验证

### 4 图像

#### 概述

产品名称	Anti-PIP4K2 alpha抗体[3A3]
描述	小鼠单克隆抗体[3A3] to PIP4K2 alpha
宿主	Mouse
经测试应用	适用于: Sandwich ELISA, WB, IHC-P
种属反应性	与反应: Human
免疫原	Recombinant fragment, corresponding to amino acids 304-366 of Human PIP5K2 alpha with a 26kDa proprietary tag (NP_005019).
阳性对照	K562 cell lysate; Human Spleen tissue.

#### 性能

形式	Liquid
存放说明	Shipped at 4°C. Upon delivery aliquot and store at -20°C or -80°C. Avoid repeated freeze / thaw cycles.
存储溶液	pH: 7.4 Constituent: 99% PBS
纯度	Protein A purified
克隆	单克隆
克隆编号	3A3
同种型	IgG1
轻链类型	kappa

#### 应用

Our [Abpromise guarantee](#) covers the use of **ab125107** in the following tested applications.

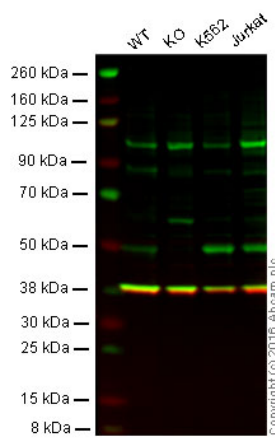
The application notes include recommended starting dilutions; optimal dilutions/concentrations should be determined by the end user.

应用	Ab评论	说明
Sandwich ELISA		Use at an assay dependent concentration.
WB		1/500 - 1/1000. Predicted molecular weight: 46 kDa.
IHC-P		Use a concentration of 5 µg/ml. Perform heat mediated antigen retrieval with citrate buffer pH 6 before commencing with IHC staining protocol.

## 靶标

功能	Catalyzes the phosphorylation of phosphatidylinositol-5-phosphate on the fourth hydroxyl of the myo-inositol ring, to form phosphatidylinositol-4,5-biphosphate.
组织特异性	Expressed ubiquitously, with high levels in the brain. Present in most tissues, except notably skeletal muscle and small intestine.
序列相似性	Contains 1 PIPK domain.

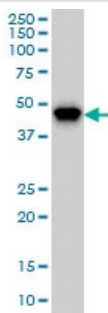
## 图片



Western blot - Anti-PIP5K2 alpha antibody [3A3] (ab125107)

Lane 1: Wild-type HAP1 cell lysate (20 µg)  
 Lane 2: PIP5K2 alpha knockout HAP1 cell lysate (20 µg)  
 Lane 3: K562 cell lysate (20 µg)  
 Lane 4: Jurkat cell lysate (20 µg)  
 Lanes 1 - 4: Merged signal (red and green).  
 Green - ab125107 observed at 50 kDa. Red - loading control, ab181602, observed at 37 kDa.

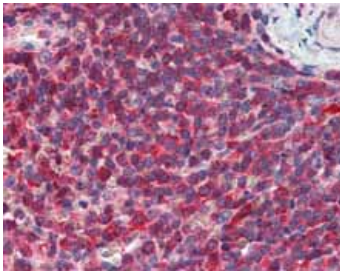
ab125107 was shown to recognize PIP5K2 alpha when PIP5K2 alpha knockout samples were used, along with additional cross-reactive bands. Wild-type and PIP5K2 alpha knockout samples were subjected to SDS-PAGE. ab125107 and ab181602 (loading control to GAPDH) were diluted 1/500 and 1/10000 respectively and incubated overnight at 4°C. Blots were developed with Goat anti-Mouse IgG H&L (IRDye® 800CW) preadsorbed ab216772 and Goat Anti-Rabbit IgG H&L (IRDye® 680RD) preadsorbed ab216777 secondary antibodies at 1/10000 dilution for 1 hour at room temperature before imaging.



Western blot - Anti-PIP5K2 alpha antibody [3A3] (ab125107)

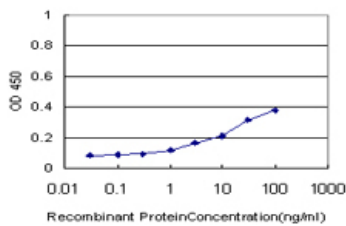
Anti-PIP4K2 alpha antibody [3A3] (ab125107) at 1/500 dilution + K562 cell lysate

**Predicted band size: 46 kDa**



ab125107, at 5 µg/ml, staining PIP5K2 alpha in Formalin-fixed, Paraffin-embedded Human Spleen tissue by Immunohistochemistry.

Immunohistochemistry (Formalin/PFA-fixed paraffin-embedded sections) - Anti-PIP5K2 alpha antibody [3A3] (ab125107)



Using ab125107 as a capture antibody, the detection limit for recombinant proprietary tagged PIP5K2 alpha is approximately 3ng/ml.

Sandwich ELISA - Anti-PIP5K2 alpha antibody [3A3] (ab125107)

**Please note:** All products are "FOR RESEARCH USE ONLY AND ARE NOT INTENDED FOR DIAGNOSTIC OR THERAPEUTIC USE"

### Our Abpromise to you: Quality guaranteed and expert technical support

- Replacement or refund for products not performing as stated on the datasheet
- Valid for 12 months from date of delivery
- Response to your inquiry within 24 hours
- We provide support in Chinese, English, French, German, Japanese and Spanish
- Extensive multi-media technical resources to help you
- We investigate all quality concerns to ensure our products perform to the highest standards

If the product does not perform as described on this datasheet, we will offer a refund or replacement. For full details of the Abpromise, please visit <https://www.abcam.cn/abpromise> or contact our technical team.

### Terms and conditions

- Guarantee only valid for products bought direct from Abcam or one of our authorized distributors