

Product datasheet

Anti-Tropomodulin 1 antibody [OT11F2] ab124034

5 图像

概述

产品名称	Anti-Tropomodulin 1 抗体[OT11F2]
描述	小鼠单克隆抗体[OT11F2] to Tropomodulin 1
宿主	Mouse
经测试应用	适用于: WB, IHC-P, Flow Cyt, ICC/IF
种属反应性	与反应: Human
免疫原	Recombinant full length Human Tropomodulin 1 produced in HEK293 cells (NP_003266).
阳性对照	HEK293T cell lysate transfected with pCMV6-ENTRY Tropomodulin 1 cDNA; MCF7 cell extract; Human pancreas carcinoma tissue; COS7 cells transiently transfected with pCMV6-ENTRY Tropomodulin 1; HEK293T cells transfected with a Tropomodulin 1 overexpress plasmid
常规说明	Dilute in PBS (pH7.3) before use. Stable for 12 months from date of receipt.  The clone number has been updated from 1F2 to OT11F2, both clone numbers name the same antibody clone.

性能

形式	Liquid
存放说明	Shipped at 4°C. Upon delivery aliquot and store at -20°C. Avoid repeated freeze / thaw cycles.
存储溶液	pH: 7.30 Preservative: 0.02% Sodium azide Constituents: 48% PBS, 50% Glycerol, 1% BSA
纯度	Protein A purified
克隆	单克隆
克隆编号	OT11F2
同种型	IgG2b

应用

Our [Abpromise guarantee](#) covers the use of **ab124034** in the following tested applications.

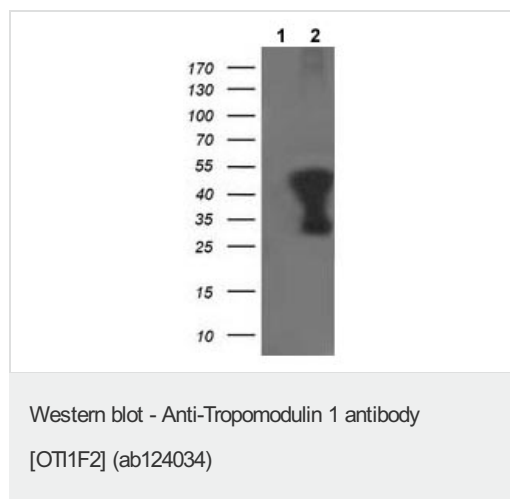
The application notes include recommended starting dilutions; optimal dilutions/concentrations should be determined by the end user.

应用	Ab评论	说明
WB		1/500 - 1/2000. Predicted molecular weight: 41 kDa.
IHC-P		1/50.
Flow Cyt		1/100. <a href="#">ab170192</a> - Mouse monoclonal IgG2b, is suitable for use as an isotype control with this antibody.
ICC/IF		1/100.

## 靶标

<b>功能</b>	Blocks the elongation and depolymerization of the actin filaments at the pointed end. The Tmod/TM complex contributes to the formation of the short actin protofilament, which in turn defines the geometry of the membrane skeleton. May play an important role in regulating the organization of actin filaments by preferentially binding to a specific tropomyosin isoform at its N-terminus.
<b>组织特异性</b>	Highly expressed in the erythrocyte, heart and skeletal muscle.
<b>序列相似性</b>	Belongs to the tropomodulin family.
<b>细胞定位</b>	Cytoplasm > cytoskeleton.

## 图片



**All lanes :** Anti-Tropomodulin 1 antibody [OT11F2] (ab124034) at 1/500 dilution

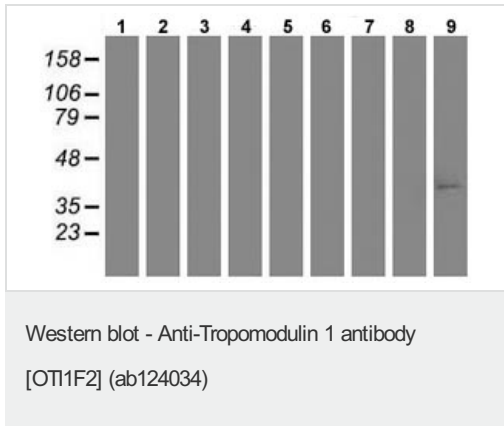
**Lane 1 :** HEK293T cell lysate transfected with pCMV6-ENTRY control

**Lane 2 :** HEK293T cell lysate transfected with pCMV6-ENTRY Tropomodulin 1 cDNA

Lysates/proteins at 5 µg per lane.

**Predicted band size:** 41 kDa

HEK293T cell lysates were generated from transient transfection of the cDNA clone (RC201134)



**All lanes** : Anti-Tropomodulin 1 antibody [OT11F2] (ab124034) at 1/500 dilution

**Lane 1** : HepG2 cell extract

**Lane 2** : HeLa cell extract

**Lane 3** : SVT2 cell extract

**Lane 4** : A549 cell extract

**Lane 5** : COS7 cell extract

**Lane 6** : Jurkat cell extract

**Lane 7** : MDCK cell extract

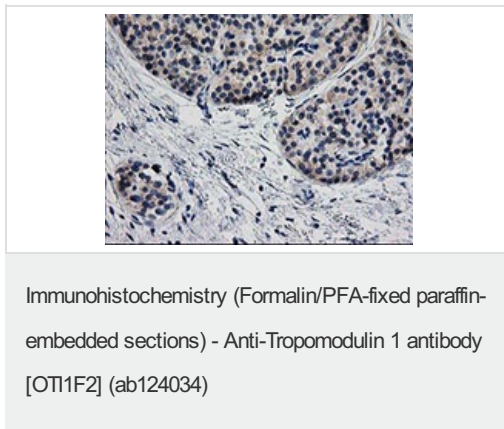
**Lane 8** : PC12 cell extract

**Lane 9** : MCF7 cell extract

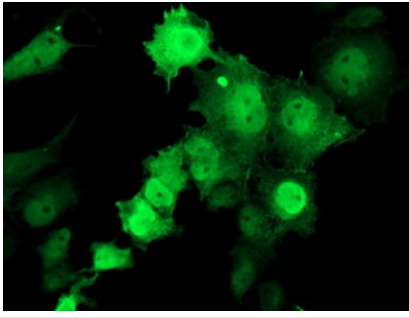
Lysates/proteins at 35 µg per lane.

**Predicted band size:** 41 kDa

HEK293T cell lysates were generated from transient transfection of the cDNA clone (RC201134)

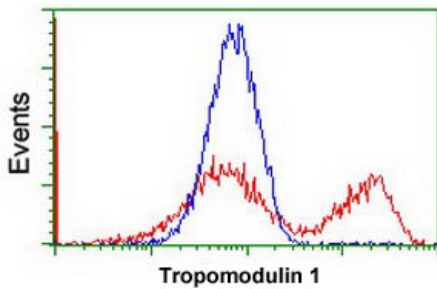


ab124034, at 1/50 dilution, staining Tropomodulin 1 in paraffin-embedded Human pancreas carcinoma tissue by Immunohistochemistry.



Immunocytochemistry/ Immunofluorescence - Anti-Tropomodulin 1 antibody [OT11F2] (ab124034)

ab124034, at 1/100 dilution, staining Tropomodulin 1 in COS7 cells transiently transfected with pCMV6-ENTRY Tropomodulin 1 by Immunofluorescence.



Flow Cytometry - Anti-Tropomodulin 1 antibody [OT11F2] (ab124034)

ab124034, at 1/100 dilution, staining Tropomodulin 1 in HEK293T cells transfected with a Tropomodulin 1 overexpress plasmid (Red) or empty vector control plasmid (Blue) by Flow cytometry.

**Please note:** All products are "FOR RESEARCH USE ONLY AND ARE NOT INTENDED FOR DIAGNOSTIC OR THERAPEUTIC USE"

### Our Abpromise to you: Quality guaranteed and expert technical support

- Replacement or refund for products not performing as stated on the datasheet
- Valid for 12 months from date of delivery
- Response to your inquiry within 24 hours
- We provide support in Chinese, English, French, German, Japanese and Spanish
- Extensive multi-media technical resources to help you
- We investigate all quality concerns to ensure our products perform to the highest standards

If the product does not perform as described on this datasheet, we will offer a refund or replacement. For full details of the Abpromise, please visit <https://www.abcam.cn/abpromise> or contact our technical team.

### Terms and conditions

- Guarantee only valid for products bought direct from Abcam or one of our authorized distributors