

Product datasheet

Anti-TUBA8 antibody [2G6] ab124030

8 图像

概述

产品名称	Anti-TUBA8抗体[2G6]
描述	小鼠单克隆抗体[2G6] to TUBA8
宿主	Mouse
经测试应用	适用于: WB, IHC-P, Flow Cyt, ICC/IF
种属反应性	与反应: Rat, Dog, Human, Monkey
免疫原	Recombinant full length Human TUBA8 (NP_061816) produced in HEK293T cells.
阳性对照	WB: HEK293T cell lysate transfected with pCMV6-ENTRY TUBA8 cDNA; HepG2, HeLa, HT29, A549, COS7, Jurkat, MDCK, PC12 and MCF7 cell extracts IHC-P: Human colon adenocarcinoma, kidney, ovary adenocarcinoma, pancreas and prostate tissues ICC/IF: COS7 cells transiently transfected by pCMV6-ENTRY TUBA8
常规说明	Dilute in PBS (pH 7.3) before use. Stable for 12 months from date of receipt.

性能

形式	Liquid
存放说明	Shipped at 4°C. Upon delivery aliquot and store at -20°C. Avoid repeated freeze / thaw cycles.
存储溶液	pH: 7.30 Preservative: 0.02% Sodium azide Constituents: 48% PBS, 50% Glycerol, 1% BSA
纯度	Protein A purified
纯化说明	ab124030 was purified from Mouse ascites fluids by affinity chromatography.
克隆	单克隆
克隆编号	2G6
同种型	IgG2a

应用

Our [Abpromise guarantee](#) covers the use of **ab124030** in the following tested applications.

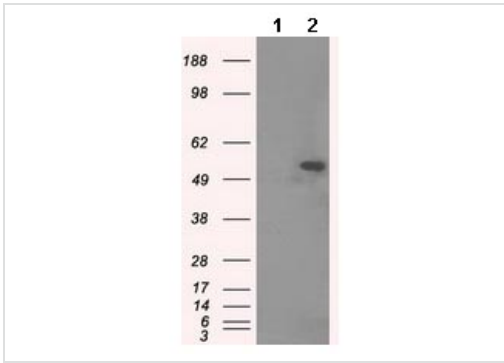
The application notes include recommended starting dilutions; optimal dilutions/concentrations should be determined by the end user.

应用	Ab评论	说明
WB		1/2000. Predicted molecular weight: 50 kDa.
IHC-P		1/50.
Flow Cyt		1/100. <a href="#">ab170191</a> - Mouse monoclonal IgG2a, is suitable for use as an isotype control with this antibody.
ICC/IF		1/100.

## 靶标

<b>功能</b>	Tubulin is the major constituent of microtubules. It binds two moles of GTP, one at an exchangeable site on the beta chain and one at a non-exchangeable site on the alpha-chain.
<b>组织特异性</b>	Preferentially expressed in heart, skeletal muscle and testis. Expressed at low levels in the developing brain.
<b>疾病相关</b>	Defects in TUBA8 are the cause of polymicrogyria with optic nerve hypoplasia (PMGONH) [MIM:613180]. It is a disease characterized by extensive polymicrogyria, optic nerve hypoplasia, severe developmental delay, hypotonia, seizures, a dysplastic or absent corpus callosum and colpocephaly. Polymicrogyria is a malformation of the cortex in which the brain surface is irregular and characterized by an excessive number of small gyri with abnormal lamination.
<b>序列相似性</b>	Belongs to the tubulin family.
<b>翻译后修饰</b>	Some glutamate residues at the C-terminus are polyglutamylated. This modification occurs exclusively on glutamate residues and results in polyglutamate chains on the gamma-carboxyl group. Also monoglycylated but not polyglycylated due to the absence of functional TLL10 in human. Monoglycylation is mainly limited to tubulin incorporated into axonemes (cilia and flagella) whereas glutamylation is prevalent in neuronal cells, centrioles, axonemes, and the mitotic spindle. Both modifications can coexist on the same protein on adjacent residues, and lowering glycylation levels increases polyglutamylated, and reciprocally. The precise function of such modifications is still unclear but they regulate the assembly and dynamics of axonemal microtubules.
<b>细胞定位</b>	Cytoplasm > cytoskeleton.

## 图片



Western blot - Anti-TUBA8 antibody [2G6]  
(ab124030)

**All lanes :** Anti-TUBA8 antibody [2G6]  
(ab124030) at 1/2000 dilution

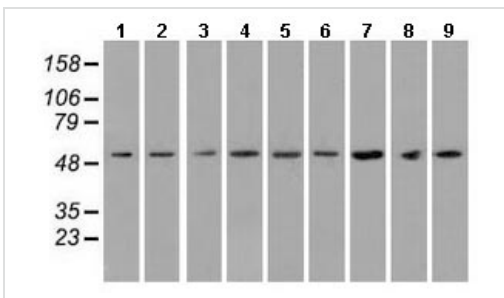
**Lane 1 :** HEK293T cell lysate transfected with  
pCMV6-ENTRY control

**Lane 2 :** HEK293T cell lysate transfected with  
pCMV6-ENTRY TUBA8 cDNA

Lysates/proteins at 5 µg per lane.

**Predicted band size:** 50 kDa

HEK293T cell lysates were generated from  
transient transfection of the cDNA clone  
(RC211175)



Western blot - Anti-TUBA8 antibody [2G6]  
(ab124030)

**All lanes :** Anti-TUBA8 antibody [2G6]  
(ab124030) at 1/2000 dilution

**Lane 1 :** HepG2 cell extracts

**Lane 2 :** HeLa cell extracts

**Lane 3 :** HT29 cell extracts

**Lane 4 :** A549 cell extracts

**Lane 5 :** COS7 cell extracts

**Lane 6 :** Jurkat cell extracts

**Lane 7 :** MDCK cell extracts

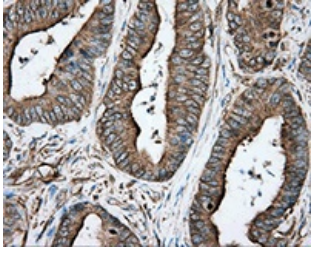
**Lane 8 :** PC12 cell extracts

**Lane 9 :** MCF7 cell extracts

Lysates/proteins at 35 µg per lane.

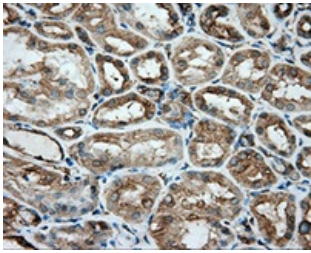
**Predicted band size:** 50 kDa

HEK293T cell lysates were generated from  
transient transfection of the cDNA clone  
(RC211175)



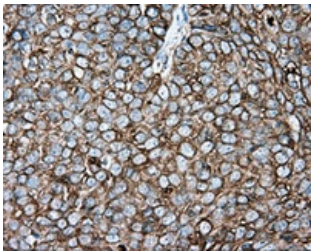
ab124030, at a 1/50 dilution, staining TUBA8 in paraffin embedded Human colon adenocarcinoma tissue by Immunohistochemistry.

Immunohistochemistry (Formalin/PFA-fixed paraffin-embedded sections) - Anti-TUBA8 antibody [2G6] (ab124030)



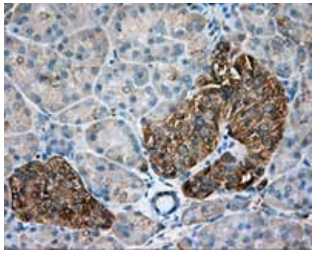
ab124030, at 1/50 dilution, staining TUBA8 in paraffin embedded Human kidney tissue by Immunohistochemistry.

Immunohistochemistry (Formalin/PFA-fixed paraffin-embedded sections) - Anti-TUBA8 antibody [2G6] (ab124030)



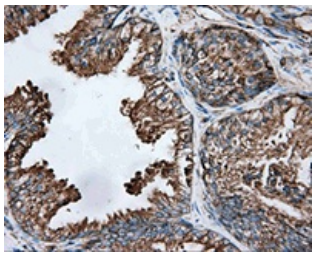
ab124030, at a 1/50 dilution, staining TUBA8 in paraffin embedded Human ovary adenocarcinoma tissue by Immunohistochemistry.

Immunohistochemistry (Formalin/PFA-fixed paraffin-embedded sections) - Anti-TUBA8 antibody [2G6] (ab124030)



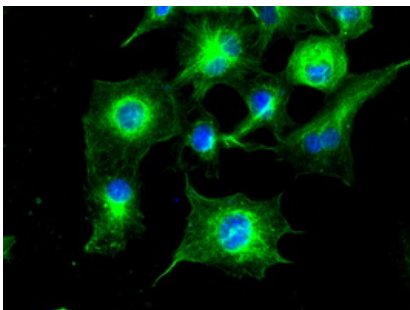
Immunohistochemistry (Formalin/PFA-fixed paraffin-embedded sections) - Anti-TUBA8 antibody [2G6] (ab124030)

ab124030, at a 1/50 dilution, staining TUBA8 in paraffin embedded Human pancreas tissue by Immunohistochemistry.



Immunohistochemistry (Formalin/PFA-fixed paraffin-embedded sections) - Anti-TUBA8 antibody [2G6] (ab124030)

ab124030, at a 1/50 dilution, staining TUBA8 in paraffin embedded Human prostate tissue by Immunohistochemistry.



Immunocytochemistry/ Immunofluorescence - Anti-TUBA8 antibody [2G6] (ab124030)

ab124030, at a 1/100 dilution, staining TUBA8 in COS7 cells transiently transfected with pCMV6-ENTRY TUBA8 by Immunofluorescence.

**Please note:** All products are "FOR RESEARCH USE ONLY AND ARE NOT INTENDED FOR DIAGNOSTIC OR THERAPEUTIC USE"

### Our Abpromise to you: Quality guaranteed and expert technical support

- Replacement or refund for products not performing as stated on the datasheet
- Valid for 12 months from date of delivery
- Response to your inquiry within 24 hours
- We provide support in Chinese, English, French, German, Japanese and Spanish
- Extensive multi-media technical resources to help you

- We investigate all quality concerns to ensure our products perform to the highest standards

If the product does not perform as described on this datasheet, we will offer a refund or replacement. For full details of the Abpromise, please visit <https://www.abcam.cn/abpromise> or contact our technical team.

### **Terms and conditions**

---

- Guarantee only valid for products bought direct from Abcam or one of our authorized distributors