

Anti-TRPM4 antibody [OTI10H5] ab123936

7 图像

概述

产品名称	Anti-TRPM4抗体[OTI10H5]
描述	小鼠单克隆抗体[OTI10H5] to TRPM4
宿主	Mouse
经测试应用	适用于: WB, IHC-P
种属反应性	与反应: Dog, Human, Monkey
免疫原	<p>Recombinant full length protein corresponding to Human TRPM4 aa 1-1214. Produced in HEK-293T cells (NP_060106).</p> <p>Sequence:</p> <pre>MVVPEKEQSWIPKIFKKTCTTFIVDSTDPGGTLCQCGRPRTAHPAVAME DAFGAAVTVWSDAHTTEKPTDAYGELDFTGAGRKHSNFLRLSDRTDPA AVYSLVTRTWGFRAPNLVSVLGGSGPVLTWLQDLLRRGLVRAAQSTG AWIVTGGLHTGIGRHVGVAVRDHQMSTGGTKVAMGVAPWGVVRRDRL INPKGSFPARYRWRGDPEDGVQFPLDYNYSAFFLVDDGTHGCLGGENRFR LRLESYISQKTGVGGTGIDIPVLLLLIDGDEKMLTRIENATQAQLPCLL VAGSGGAADCLAETLEDTLAPGSGGARQGEARDRIRRRFFPKGDLEVLQAQ VERIMTRKELLTVYSSEEDGSEEFETIVLKALVKACGSSEASAYLDELRLA VAWNRVDIAQSELFRGDIQWRSFHLEASLMDALLNDRPEFVRLISHGLS LGHFLTPMRLAQLYSAAPSNLIRNLLDQASHSAGTKAPALKGGAELRP PDVGHVLRMLLGKMCAPRYPSGGAWDPHPGQGFGESEMYLLSDKATSPLSL DAGLGQAPWSDLLLWALLLNRAQMAMYFWEMGSNAVSSALGACLLLRVMA RLEPDAEEAARRKDLAFKFEGMGVDLFGECYRSSEVRAARLLLRRCPLWG DATCLQLAMQADARAFFAQDGVQSLLTQKWWGDMASSTPIWALVLAFFCP PLIYTRLITFRKSEEEPTREELEFDMDSVINGEGPVGADPAEKTPLGVP RQSGRPGCCGRCGRRCLRRWFHFWGAPVTIFMGNVVSYLLFLLFSRV LLVDFQPAPPGSELELLLYFWAFTLLCEELRQGLSGGGGSLASGGPGPGA SLSQRLRLYLADSWNQCDLVALTCFLLGVGCRLTPGLYHLGRTVLCIDFM VFTVRLHIFTVNKQLGPKIVIVSKMMKDVFFFLFLLGVWLVAAGVATEG LLRPRDSDFPSILRRVFYRYPYLQIFGQIPQEDMDVALMEHSNCSSEPGFW AHPGAQAGTCVSQYANWLVLVLLVIFLLVANILLVNLIIAMFSYTFGKV QGNSDLYWKAQRYRLIREFHSRPAAPPFIVISHLRLLLRQLCRRPRSPQ PSSPALEHFRVYLSKEAERKLLTWESVHKENFLARARDKRESDSERLKR TSQKVDLALKQLGHIREYEQRLKVLEREVQQCSRVLGWVAEALSRSALLP PGGPPPPDLPGSKD</pre>

Database link: [Q8TD43](#)

阳性对照	WB: HEK-293T cells transfected with pCMV6-ENTRY TRPM4 cDNA; HepG2, HeLa, HT-29, COS-7, Jurkat, MDCK and MCF7 cell extracts. IHC-P: Human kidney, liver, liver carcinoma, ovary and pancreas tissues.
常规说明	Clone OT110H5 (formerly 10H5).

性能

形式	Liquid
存放说明	Shipped at 4°C. Store at +4°C short term (1-2 weeks). Upon delivery aliquot. Store at -20°C. Avoid freeze / thaw cycle.
存储溶液	pH: 7.30 Preservative: 0.02% Sodium azide Constituents: PBS, 1% BSA, 50% Glycerol
纯度	Affinity purified
纯化说明	Purified from cell culture supernatant by affinity chromatography.
克隆	单克隆
克隆编号	OT110H5
同种型	IgG1

应用

Our [Abpromise guarantee](#) covers the use of **ab123936** in the following tested applications.

The application notes include recommended starting dilutions; optimal dilutions/concentrations should be determined by the end user.

应用	Ab评论	说明
WB		1/5000 - 1/10000. Predicted molecular weight: 134 kDa.
IHC-P		1/50. Perform heat mediated antigen retrieval before commencing with IHC staining protocol.

靶标

功能	Calcium-activated non selective (CAN) cation channel that mediates membrane depolarization. While it is activated by increase in intracellular Ca(2+), it is impermeable to it. Mediates transport of monovalent cations (Na(+) > K(+) > Cs(+) > Li(+)), leading to depolarize the membrane. It thereby plays a central role in cardiomyocytes, neurons from entorhinal cortex, dorsal root and vomeronasal neurons, endocrine pancreas cells, kidney epithelial cells, cochlea hair cells etc. Participates in T-cell activation by modulating Ca(2+) oscillations after T lymphocyte activation, which is required for NFAT-dependent IL2 production. Involved in myogenic constriction of cerebral arteries. Controls insulin secretion in pancreatic beta-cells. May also be involved in pacemaking or could cause irregular electrical activity under conditions of Ca(2+) overload. Affects T-helper 1 (Th1) and T-helper 2 (Th2) cell motility and cytokine production through differential regulation of calcium signaling and NFATC1 localization. Enhances cell proliferation through up-regulation of the beta-catenin signaling pathway.
-----------	--

组织特异性

Widely expressed with a high expression in intestine and prostate. In brain, it is both expressed in whole cerebral arteries and isolated vascular smooth muscle cells. Prominently expressed in Purkinje fibers. Expressed at higher levels in T-helper 2 (Th2) cells as compared to T-helper 1 (Th1) cells.

疾病相关

Defects in TRPM4 are the cause of progressive familial heart block type 1B (PFHB1B) [MIM:604559]. It is a cardiac bundle branch disorder characterized by progressive alteration of cardiac conduction through the His-Purkinje system, with a pattern of a right bundle-branch block and/or left anterior hemiblock occurring individually or together. It leads to complete atrio-ventricular block causing syncope and sudden death.

序列相似性

Belongs to the transient receptor (TC 1.A.4) family. LTrpC subfamily. TRPM4 sub-subfamily.

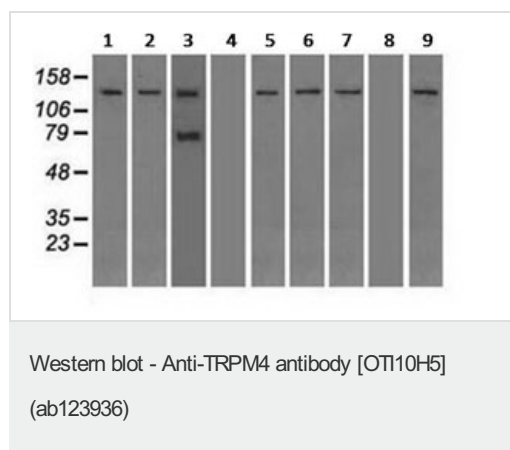
翻译后修饰

Phosphorylation by PKC leads to increase the sensitivity to Ca(2+).
Sumoylated. Desumoylated by SENP1.

细胞定位

Endoplasmic reticulum. Golgi apparatus and Cell membrane. Endoplasmic reticulum. Golgi apparatus.

图片



All lanes : Anti-TRPM4 antibody [OTI10H5] (ab123936) at 1/5000 dilution

Lane 1 : HepG2 (Human liver hepatocellular carcinoma cell line) cell extract

Lane 2 : HeLa (Human epithelial cell line from cervix adenocarcinoma) cell extract

Lane 3 : HT-29 (Human colorectal adenocarcinoma cell line) cell extract

Lane 4 : A549 (Human lung carcinoma cell line) cell extract

Lane 5 : COS-7 (African green monkey kidney fibroblast-like cell line) cell extract

Lane 6 : Jurkat (Human T cell leukemia cell line from peripheral blood) cell extract

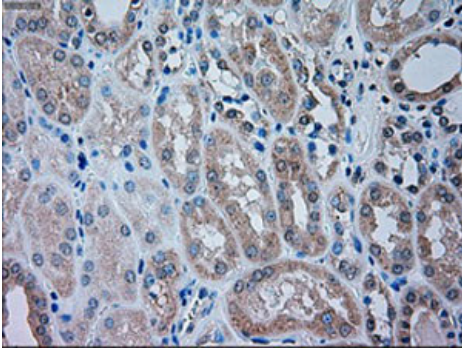
Lane 7 : MDCK (Canine kidney cell line) cell extract

Lane 8 : PC-12 (Rat adrenal gland pheochromocytoma cell line) cell extract

Lane 9 : MCF7 (Human breast adenocarcinoma cell line) cell extract

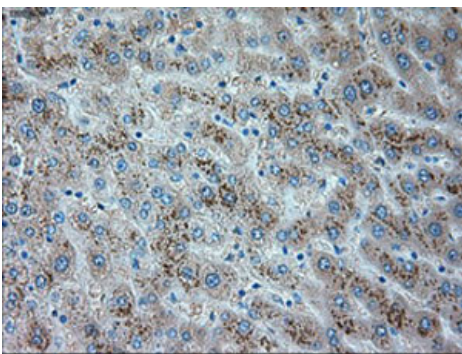
Lysates/proteins at 35 µg per lane.

Predicted band size: 134 kDa



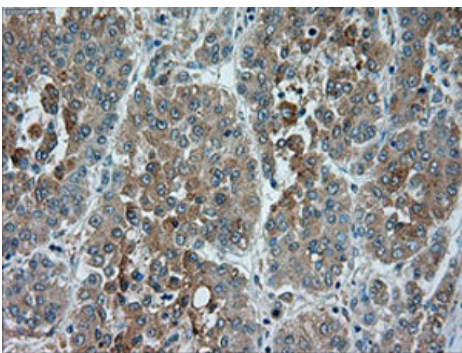
Immunohistochemistry (Formalin/PFA-fixed paraffin-embedded sections) - Anti-TRPM4 antibody [OT110H5] (ab123936)

Paraffin-embedded human kidney tissue stained for TRPM4 with ab123936 at a 1/50 dilution in immunohistochemical analysis. Heat-induced epitope retrieval by 10 mM citric buffer, pH 6.0, 100°C for 10 minutes.



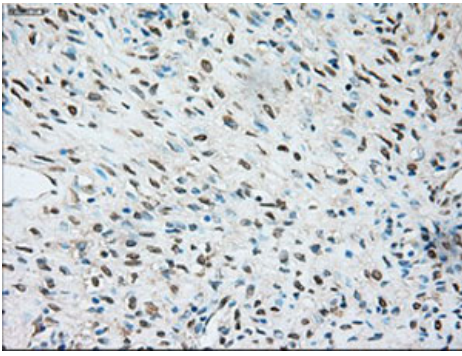
Immunohistochemistry (Formalin/PFA-fixed paraffin-embedded sections) - Anti-TRPM4 antibody [OT110H5] (ab123936)

Paraffin-embedded human liver tissue stained for TRPM4 with ab123936 at a 1/50 dilution in immunohistochemical analysis. Heat-induced epitope retrieval by 10 mM citric buffer, pH 6.0, 100°C for 10 minutes.



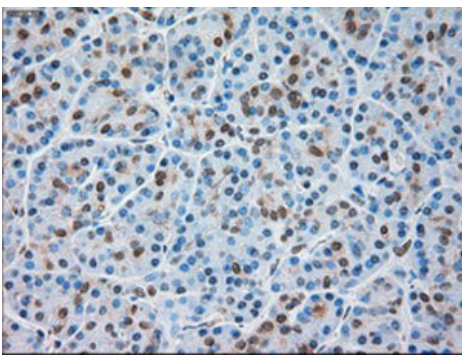
Immunohistochemistry (Formalin/PFA-fixed paraffin-embedded sections) - Anti-TRPM4 antibody [OT110H5] (ab123936)

Paraffin-embedded human liver carcinoma tissue stained for TRPM4 with ab123936 at a 1/50 dilution in immunohistochemical analysis. Heat-induced epitope retrieval by 10 mM citric buffer, pH 6.0, 100°C for 10 minutes.



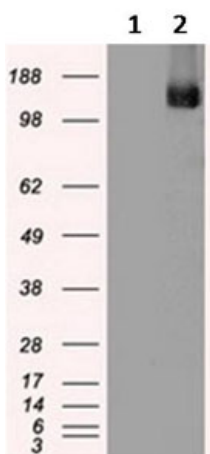
Immunohistochemistry (Formalin/PFA-fixed paraffin-embedded sections) - Anti-TRPM4 antibody [OTI10H5] (ab123936)

Paraffin-embedded human ovary tissue stained for TRPM4 with ab123936 at a 1/50 dilution in immunohistochemical analysis. Heat-induced epitope retrieval by 10 mM citric buffer, pH 6.0, 100°C for 10 minutes.



Immunohistochemistry (Formalin/PFA-fixed paraffin-embedded sections) - Anti-TRPM4 antibody [OTI10H5] (ab123936)

Paraffin-embedded human pancreas tissue stained for TRPM4 with ab123936 at a 1/50 dilution in immunohistochemical analysis. Heat-induced epitope retrieval by 10 mM citric buffer, pH 6.0, 100°C for 10 minutes.



Western blot - Anti-TRPM4 antibody [OTI10H5] (ab123936)

All lanes : Anti-TRPM4 antibody [OTI10H5] (ab123936) at 1/5000 dilution

Lane 1 : HEK-293T (Human epithelial cell line from embryonic kidney transformed with large T antigen) cells transfected with pCMV6-ENTRY control cDNA

Lane 2 : HEK-293T cells transfected with pCMV6-ENTRY TRPM4 cDNA

Lysates/proteins at 5 µg per lane.

Predicted band size: 134 kDa

Our Abpromise to you: Quality guaranteed and expert technical support

- Replacement or refund for products not performing as stated on the datasheet
- Valid for 12 months from date of delivery
- Response to your inquiry within 24 hours

- We provide support in Chinese, English, French, German, Japanese and Spanish
- Extensive multi-media technical resources to help you
- We investigate all quality concerns to ensure our products perform to the highest standards

If the product does not perform as described on this datasheet, we will offer a refund or replacement. For full details of the Abpromise, please visit <https://www.abcam.cn/abpromise> or contact our technical team.

Terms and conditions

- Guarantee only valid for products bought direct from Abcam or one of our authorized distributors