

Product datasheet

Anti-NUCB1 antibody [1A5] ab123922

4 图像

概述

产品名称	Anti-NUCB1抗体[1A5]
描述	小鼠单克隆抗体[1A5] to NUCB1
宿主	Mouse
经测试应用	适用于: WB, IHC-P, Flow Cyt
种属反应性	与反应: Human
免疫原	Recombinant full length Human Nucleobindin 1 produced in HEK293T cells (NP_006175).
阳性对照	HEK293T cells transfected with pCMV6-ENTRY Nucleobindin 1 cDNA; Human endometrium tissue and bladder carcinoma tissue.
常规说明	Dilute in PBS (pH7.3) before use. Stable for 12 months from date of receipt.

性能

形式	Liquid
存放说明	Shipped at 4°C. Upon delivery aliquot and store at -20°C. Avoid repeated freeze / thaw cycles.
存储溶液	pH: 7.30 Preservative: 0.02% Sodium azide Constituents: 48% PBS, 50% Glycerol, 1% BSA
纯度	Protein G purified
纯化说明	ab123922 is purified from Mouse ascites fluid by affinity chromatography.
克隆	单克隆
克隆编号	1A5
同种型	IgG1

应用

Our [Abpromise guarantee](#) covers the use of **ab123922** in the following tested applications.

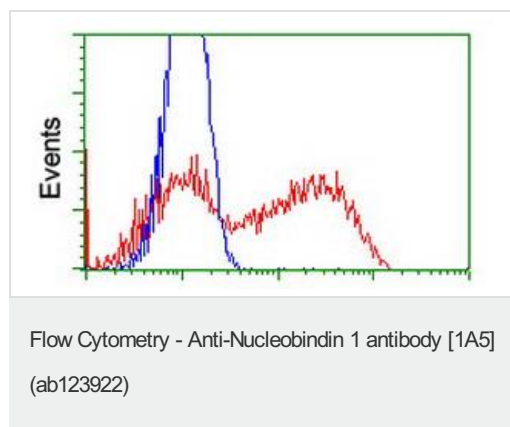
The application notes include recommended starting dilutions; optimal dilutions/concentrations should be determined by the end user.

应用	Ab评论	说明
WB		1/2000. Predicted molecular weight: 54 kDa.
IHC-P		1/150.
Flow Cyt		1/100. ab170190 - Mouse monoclonal IgG1, is suitable for use as an isotype control with this antibody.

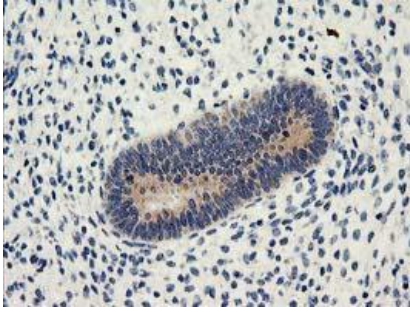
靶标

功能	Major calcium-binding protein of the Golgi. May have a role in calcium homeostasis.
组织特异性	Expressed both in fetal and adult heart, lung, liver, kidney and brain, and in adult skeletal muscle, placenta and pancreas.
序列相似性	Belongs to the nucleobindin family. Contains 2 EF-hand domains.
结构域	The EF-hand domains are unfolded in the absence of Ca(2+) and fold upon Ca(2+) addition.
翻译后修饰	Phosphorylated upon DNA damage, probably by ATM or ATR.
细胞定位	Golgi apparatus > cis-Golgi network membrane. Cytoplasm. A small fraction of the protein may be cytoplasmic.

图片

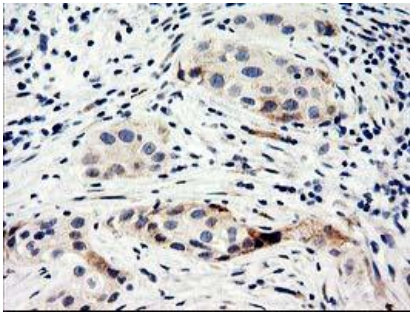


ab123922 at 1/100 dilution staining Nucleobindin 1 in HEK293T cells transfected with either pCMV6-ENTRY Nucleobindin 1 (Red) or empty vector control plasmid (Blue) by flow cytometry.



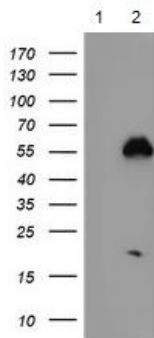
Immunohistochemistry (Formalin/PFA-fixed paraffin-embedded sections) - Anti-Nucleobindin 1 antibody [1A5] (ab123922)

ab123922 at 1/150 dilution staining Nucleobindin 1 in Paraffin-embedded Human endometrium tissue by Immunohistochemistry.



Immunohistochemistry (Formalin/PFA-fixed paraffin-embedded sections) - Anti-Nucleobindin 1 antibody [1A5] (ab123922)

ab123922 at 1/150 dilution staining Nucleobindin 1 in Paraffin-embedded Human bladder carcinoma tissue by Immunohistochemistry.



Western blot - Anti-Nucleobindin 1 antibody [1A5] (ab123922)

All lanes : Anti-NUCB1 antibody [1A5] (ab123922) at 1/2000 dilution

Lane 1 : HEK293T cells transfected with pCMV6-ENTRY control cDNA

Lane 2 : HEK293T cells transfected with pCMV6-ENTRY Nucleobindin 1 cDNA

Lysates/proteins at 5 µg per lane.

Predicted band size: 54 kDa

HEK293T cell lysates were generated from transient transfection of the cDNA clone (RC201786)

Please note: All products are "FOR RESEARCH USE ONLY AND ARE NOT INTENDED FOR DIAGNOSTIC OR THERAPEUTIC USE"

Our Abpromise to you: Quality guaranteed and expert technical support

- Replacement or refund for products not performing as stated on the datasheet
- Valid for 12 months from date of delivery
- Response to your inquiry within 24 hours

- We provide support in Chinese, English, French, German, Japanese and Spanish
- Extensive multi-media technical resources to help you
- We investigate all quality concerns to ensure our products perform to the highest standards

If the product does not perform as described on this datasheet, we will offer a refund or replacement. For full details of the Abpromise, please visit <https://www.abcam.cn/abpromise> or contact our technical team.

Terms and conditions

- Guarantee only valid for products bought direct from Abcam or one of our authorized distributors