

Product datasheet

Anti-G protein alpha Inhibitor 2 antibody ab123427

2 图像

概述

产品名称	Anti-G蛋白alpha抑制剂2抗体
描述	兔多克隆抗体to G蛋白alpha抑制剂2
宿主	Rabbit
经测试应用	适用于: WB
种属反应性	与反应: Human
免疫原	Synthetic peptide conjugated to KLH, corresponding to a region within N-terminal amino acids 77-107 of Human G protein alpha Inhibitor 2 (NP_002061.1).
阳性对照	SK-BR-3 cell line lysate, 293 cell lysate transiently transfected with Human G protein alpha Inhibitor 2 gene.

性能

形式	Liquid
存放说明	Shipped at 4°C. Store at 4°C (up to 6 months). Store at -20°C long term.
存储溶液	Preservative: 0.09% Sodium azide Constituent: 99% PBS
纯度	Immunogen affinity purified
纯化说明	ab123427 is purified through a Protein A column, followed by peptide affinity purification.
克隆	多克隆
同种型	IgG

应用

Our [Abpromise guarantee](#) covers the use of **ab123427** in the following tested applications.

The application notes include recommended starting dilutions; optimal dilutions/concentrations should be determined by the end user.

应用	Ab评论	说明
WB		1/100 - 1/500. Predicted molecular weight: 40 kDa.

## 靶标

### 功能

Guanine nucleotide-binding proteins (G proteins) are involved as modulators or transducers in various transmembrane signaling systems. The G(i) proteins are involved in hormonal regulation of adenylate cyclase: they inhibit the cyclase in response to beta-adrenergic stimuli. May play a role in cell division.

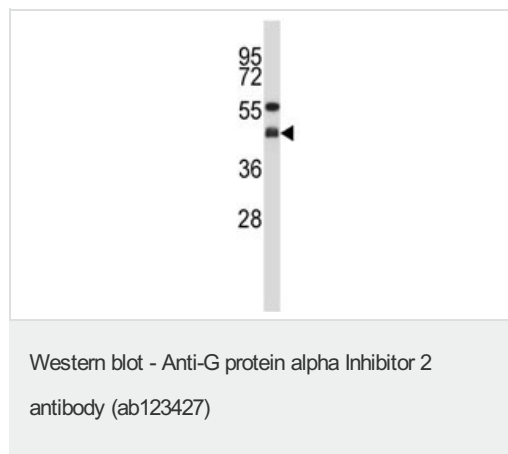
### 序列相似性

Belongs to the G-alpha family. G(i/o/t/z) subfamily.

### 细胞定位

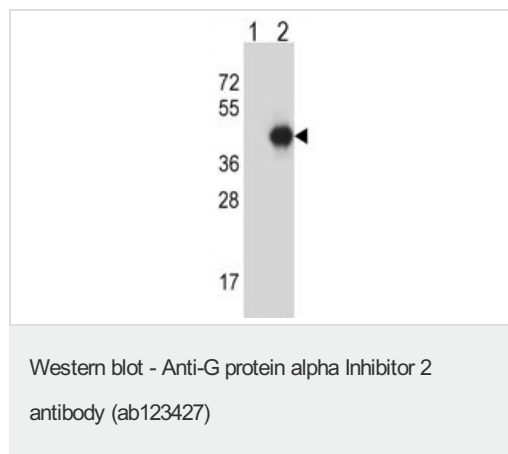
Cytoplasm. Cytoplasm > cytoskeleton > centrosome. Cell membrane. Localizes in the centrosomes of interphase and mitotic cells. Detected at the cleavage furrow and/or the midbody.

## 图片



Anti-G protein alpha Inhibitor 2 antibody (ab123427) at 1/100 dilution + SK-BR-3 cell line lysate at 35 µg

**Predicted band size:** 40 kDa



**All lanes :** Anti-G protein alpha Inhibitor 2 antibody (ab123427) at 1/100 dilution

**Lane 1 :** 293 cell lysate, non-transfected

**Lane 2 :** 293 cell lysate, transiently transfected with Human G protein alpha Inhibitor 2 gene

Lysates/proteins at 2 µg per lane.

**Predicted band size:** 40 kDa

**Please note:** All products are "FOR RESEARCH USE ONLY AND ARE NOT INTENDED FOR DIAGNOSTIC OR THERAPEUTIC USE"

## Our Abpromise to you: Quality guaranteed and expert technical support

- Replacement or refund for products not performing as stated on the datasheet
- Valid for 12 months from date of delivery
- Response to your inquiry within 24 hours

- We provide support in Chinese, English, French, German, Japanese and Spanish
- Extensive multi-media technical resources to help you
- We investigate all quality concerns to ensure our products perform to the highest standards

If the product does not perform as described on this datasheet, we will offer a refund or replacement. For full details of the Abpromise, please visit <https://www.abcam.cn/abpromise> or contact our technical team.

### **Terms and conditions**

---

- Guarantee only valid for products bought direct from Abcam or one of our authorized distributors