

Product datasheet

Anti-C1orf156 antibody ab122266

3 图像

概述

产品名称	Anti-C1orf156抗体
描述	兔多克隆抗体to C1orf156
宿主	Rabbit
经测试应用	适用于: IHC-P, WB, ICC/IF
种属反应性	与反应: Human
免疫原	antigen sequence: NKVIETLPGF QHVKLSVVKT ILLKENFPGE NIVSKSFSSH SDLITGVYEG GLKWECTFD LLAYFTKAKV KFAGKKVLDL GCGSGL, corresponding to amino acids 115-200 of Human C1orf156. Run BLAST with ExPASy Run BLAST with NCBI
阳性对照	Human duodenum tissue; C1orf156 HEK293T over-expression lysate
常规说明	ab122266 is mono-specific.

性能

形式	Liquid
存放说明	Shipped at 4°C. Upon delivery aliquot and store at -20°C. Avoid freeze / thaw cycles.
存储溶液	pH: 7.20 Preservative: 0.02% Sodium azide Constituents: 59% PBS, 40% Glycerol
纯度	Immunogen affinity purified
Primary antibody说明	ab122266 is mono-specific.
克隆	多克隆
同种型	IgG

应用

Our [Abpromise guarantee](#) covers the use of **ab122266** in the following tested applications.

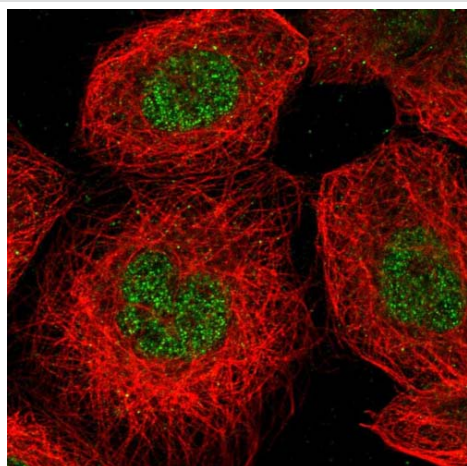
The application notes include recommended starting dilutions; optimal dilutions/concentrations should be determined by the end user.

应用	Ab评论	说明
IHC-P		1/10 - 1/20. Perform heat mediated antigen retrieval with citrate buffer pH 6 before commencing with IHC staining protocol.
WB		1/250 - 1/500.
ICC/IF		Use a concentration of 1 - 4 $\mu\text{g/ml}$. Recommend PFA Fixation and Triton X-100 treatment

靶标

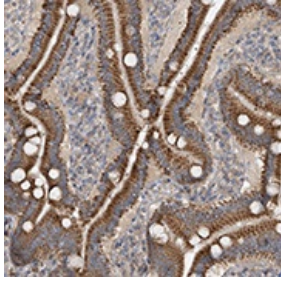
功能	Probable histidine methyltransferase.
序列相似性	Belongs to the methyltransferase superfamily. METTL18 family.
翻译后修饰	Phosphorylated upon DNA damage, probably by ATM or ATR.

图片



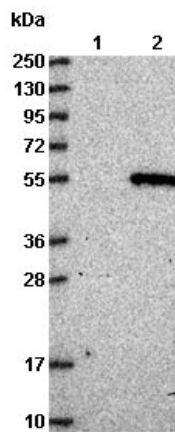
Immunofluorescent staining of Human cell line A-431 shows positivity in nucleus but not nucleoli. Recommended concentration of ab122266 1-4 $\mu\text{g/ml}$. Cells treated with PFA/Triton X-100.

Immunocytochemistry/ Immunofluorescence - Anti-C1orf156 antibody (ab122266)



ab122266, at 1/10 dilution, staining C1orf156 in paraffin-embedded Human duodenum tissue by Immunohistochemistry.

Immunohistochemistry (Formalin/PFA-fixed paraffin-embedded sections) - Anti-C1orf156 antibody (ab122266)



All lanes : Anti-C1orf156 antibody (ab122266) at 1/250 dilution

Lane 1 : Negative control (vector only transfected HEK293T lysate)

Lane 2 : Over-expression Lysate (Co-expressed with a C-terminal myc-DDK tag (~3.1 kDa) in mammalian HEK293T cells)

Western blot - Anti-C1orf156 antibody (ab122266)

Please note: All products are "FOR RESEARCH USE ONLY AND ARE NOT INTENDED FOR DIAGNOSTIC OR THERAPEUTIC USE"

Our Abpromise to you: Quality guaranteed and expert technical support

- Replacement or refund for products not performing as stated on the datasheet
- Valid for 12 months from date of delivery
- Response to your inquiry within 24 hours
- We provide support in Chinese, English, French, German, Japanese and Spanish
- Extensive multi-media technical resources to help you
- We investigate all quality concerns to ensure our products perform to the highest standards

If the product does not perform as described on this datasheet, we will offer a refund or replacement. For full details of the Abpromise, please visit <https://www.abcam.cn/abpromise> or contact our technical team.

Terms and conditions

- Guarantee only valid for products bought direct from Abcam or one of our authorized distributors