

Product datasheet

Anti-FBXO21 antibody [2B8] ab119862

7 图像

概述

产品名称	Anti-FBXO21抗体[2B8]
描述	小鼠单克隆抗体[2B8] to FBXO21
宿主	Mouse
经测试应用	适用于: WB, IHC-P, Flow Cyt, ICC/IF
种属反应性	与反应: Rat, Dog, Human, Monkey
免疫原	Recombinant full length protein corresponding to Human FBXO21 (NP_269373) produced in HEK293T cells.
阳性对照	HEK293T cells transfected with pCMV6-ENTRY FBXO21. COS7 cells and cell extract. MDCK cell extract. PC12 cell extract. MCF7 cell extract. Jurkat cells. Human kidney tissue. Human ovary tissue.
常规说明	Dilute in PBS (pH7.3) before use. Stable for 12 months from date of receipt.

性能

形式	Liquid
存放说明	Shipped at 4°C. Upon delivery aliquot and store at -20°C. Avoid repeated freeze / thaw cycles.
存储溶液	pH: 7.30 Preservative: 0.02% Sodium azide Constituents: 48% PBS, 50% Glycerol, 1% BSA
纯度	Protein G purified
纯化说明	Purified from mouse ascites fluids by affinity chromatography.
克隆	单克隆
克隆编号	2B8
同种型	IgG1

应用

Our [Abpromise guarantee](#) covers the use of **ab119862** in the following tested applications.

The application notes include recommended starting dilutions; optimal dilutions/concentrations should be determined by the end user.

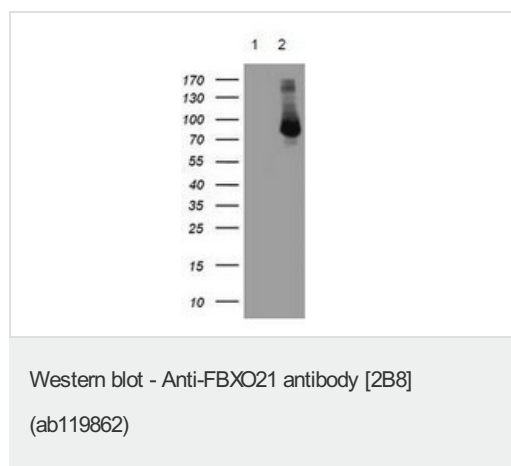
应用	Ab评论	说明
WB		1/500 - 1/2000. Predicted molecular weight: 72 kDa.
IHC-P		1/150.
Flow Cyt		1/100. <a href="#">ab170190</a> - Mouse monoclonal IgG1, is suitable for use as an isotype control with this antibody.
ICC/IF		1/100.

## 靶标

**功能** Substrate-recognition component of the SCF (SKP1-CUL1-F-box protein)-type E3 ubiquitin ligase complex.

**序列相似性** Contains 1 F-box domain.

## 图片



**All lanes** : Anti-FBXO21 antibody [2B8] (ab119862) at 1/500 dilution

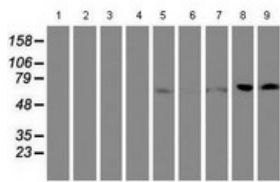
**Lane 1** : HEK293T cells transfected with pCMV6-ENTRY control

**Lane 2** : HEK293T cells transfected with pCMV6-ENTRY FBXO21

Lysates/proteins at 5 µg per lane.

**Predicted band size:** 72 kDa

HEK293T cell lysates were generated from transient transfection of the cDNA clone (RC204653)



Western blot - Anti-FBXO21 antibody [2B8]  
(ab119862)

**All lanes :** Anti-FBXO21 antibody [2B8]

(ab119862) at 1/500 dilution

**Lane 1 :** HepG2 cell extract

**Lane 2 :** HeLa cell extract

**Lane 3 :** SVT2 cell extract

**Lane 4 :** A459 cell extract

**Lane 5 :** COS7 cell extract

**Lane 6 :** Jurkat cell extract

**Lane 7 :** MDCK cell extract

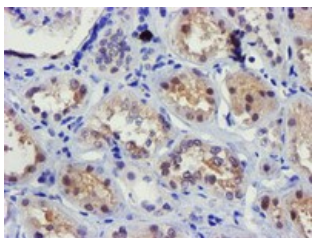
**Lane 8 :** PC12 cell extract

**Lane 9 :** MCF7 cell extract

Lysates/proteins at 35 µg per lane.

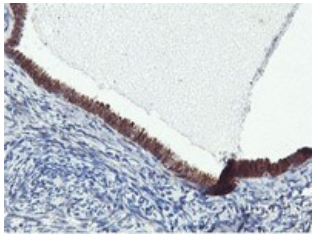
**Predicted band size:** 72 kDa

HEK293T cell lysates were generated from transient transfection of the cDNA clone (RC204592)



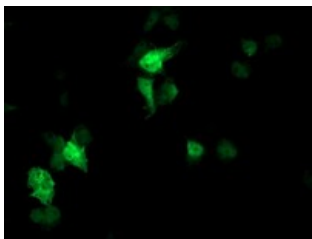
Immunohistochemistry (Formalin/PFA-fixed paraffin-embedded sections) - Anti-FBXO21 antibody [2B8]  
(ab119862)

ab119862, at 1/150, staining FBXO21 in paraffin embedded Human kidney tissue by Immunohistochemistry.



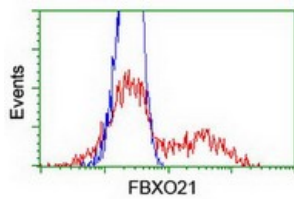
ab119862, at 1/150, staining FBXO21 in paraffin embedded Human ovary tissue by Immunohistochemistry.

Immunohistochemistry (Formalin/PFA-fixed paraffin-embedded sections) - Anti-FBXO21 antibody [2B8] (ab119862)



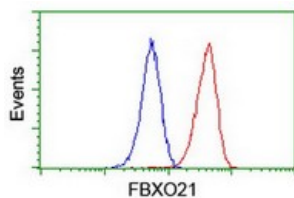
ab119862, at 1/100, immunofluorescent staining of COS7 cells transiently transfected by pCMV6-ENTRY FBXO21.

Immunocytochemistry/ Immunofluorescence - Anti-FBXO21 antibody [2B8] (ab119862)



HEK293T cells transfected with either FBXO21 overexpress plasmid (Red) or empty vector control plasmid (Blue) were immunostained by ab119862, at 1/100 and then analyzed by flow cytometry.

Flow Cytometry - Anti-FBXO21 antibody [2B8] (ab119862)



Flow cytometric analysis of Jurkat cells, using ab119862, at 1/100 (Red) compared to a nonspecific negative control antibody (Blue).

Flow Cytometry - Anti-FBXO21 antibody [2B8] (ab119862)

**Please note:** All products are "FOR RESEARCH USE ONLY AND ARE NOT INTENDED FOR DIAGNOSTIC OR THERAPEUTIC USE"

**Our Abpromise to you: Quality guaranteed and expert technical support**

- Replacement or refund for products not performing as stated on the datasheet
- Valid for 12 months from date of delivery
- Response to your inquiry within 24 hours
  
- We provide support in Chinese, English, French, German, Japanese and Spanish
- Extensive multi-media technical resources to help you
- We investigate all quality concerns to ensure our products perform to the highest standards

If the product does not perform as described on this datasheet, we will offer a refund or replacement. For full details of the Abpromise, please visit <https://www.abcam.cn/abpromise> or contact our technical team.

### **Terms and conditions**

---

- Guarantee only valid for products bought direct from Abcam or one of our authorized distributors