

Product datasheet

Anti-CHCHD5 antibody [3H3] ab119743

9 图像

概述

产品名称	Anti-CHCHD5抗体[3H3]
描述	小鼠单克隆抗体[3H3] to CHCHD5
宿主	Mouse
经测试应用	适用于: WB, IHC-P, Flow Cyt, ICC/IF
种属反应性	与反应: Human
免疫原	Recombinant full length protein, corresponding to amino acids 1-110 of Human CHCHD5 produced in E.coli (NP_115685)
阳性对照	HEK293T cells transfected with pCMV6-ENTRY CHCHD5 cDNA; COS7 cells transiently transfected by pCMV6-ENTRY CHCHD5 cDNA; tissue of Human kidney, liver carcinoma, lymphoma, endometrium, bladder carcinoma, tonsil
常规说明	Dilute in PBS (pH7.3) before use. Stable for 12 months from date of receipt.

性能

形式	Liquid
存放说明	Shipped at 4°C. Upon delivery aliquot and store at -20°C. Avoid repeated freeze / thaw cycles.
存储溶液	pH: 7.30 Preservative: 0.02% Sodium azide Constituents: 48% PBS, 50% Glycerol, 1% BSA
纯度	Protein G purified
纯化说明	Purified from mouse ascites fluids by affinity chromatography
克隆	单克隆
克隆编号	3H3
同种型	IgG1

应用

Our [Abpromise guarantee](#) covers the use of **ab119743** in the following tested applications.

The application notes include recommended starting dilutions; optimal dilutions/concentrations should be determined by the end user.

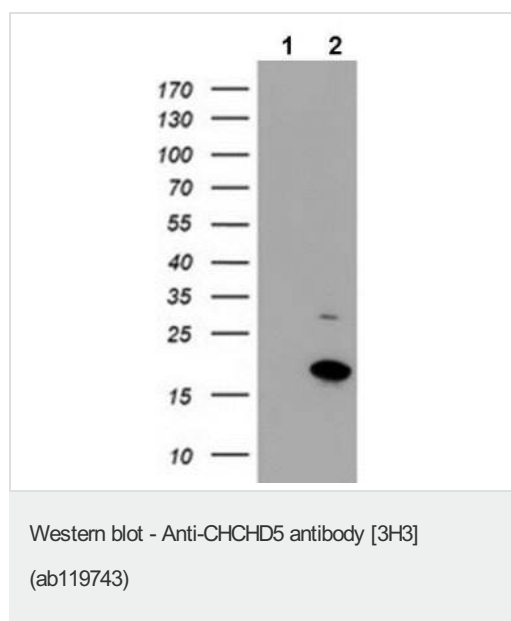
应用	Ab评论	说明
WB		1/200. Predicted molecular weight: 12 kDa.
IHC-P		1/150. Perform heat mediated antigen retrieval with citrate buffer pH 6 before commencing with IHC staining protocol.
Flow Cyt		1/100. ab170190 - Mouse monoclonal IgG1, is suitable for use as an isotype control with this antibody.
ICC/IF		1/100.

靶标

序列相似性

Contains 1 CHCH domain.

图片



All lanes : Anti-CHCHD5 antibody [3H3] (ab119743) at 1/200 dilution

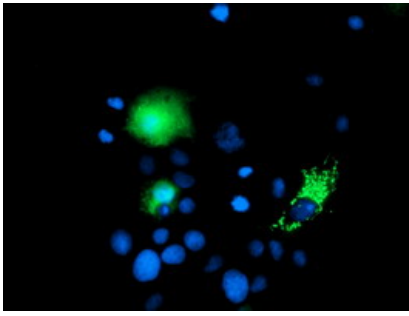
Lane 1 : Lysate of HEK293T cells transfected with pCMV6-ENTRY control cDNA

Lane 2 : Lysate of HEK293T cells transfected with pCMV6-ENTRY CHCHD5 cDNA

Lysates/proteins at 5 µg per lane.

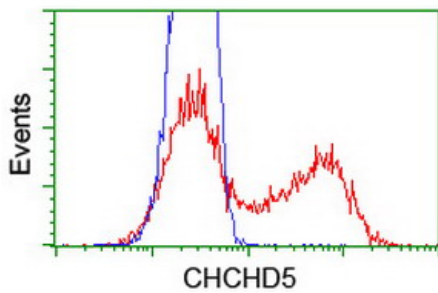
Predicted band size: 12 kDa

HEK293T cell lysates were generated from transient transfection of the cDNA clone (RC204223)



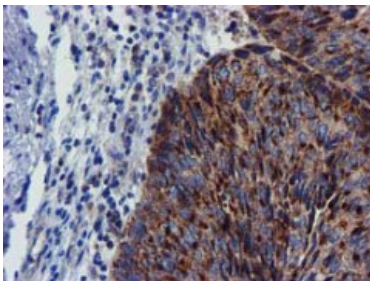
ab119743, at 1/100 dilution, staining CHCHD5 in COS7 cells transiently transfected with pCMV6-ENTRY CHCHD5 cDNA by immunofluorescence

Immunocytochemistry/ Immunofluorescence - Anti-CHCHD5 antibody [3H3] (ab119743)



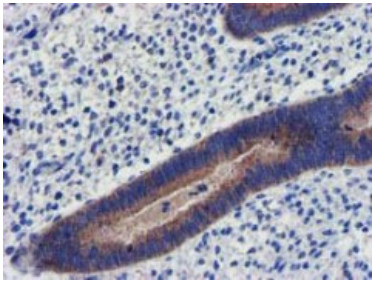
ab119743, at 1/100 dilution, staining CHCHD5 in HEK293T cells transfected with either pCMV6-ENTRY CHCHD5 overexpressing plasmid (Red) or empty vector control plasmid (Blue) by flow cytometry

Flow Cytometry - Anti-CHCHD5 antibody [3H3] (ab119743)



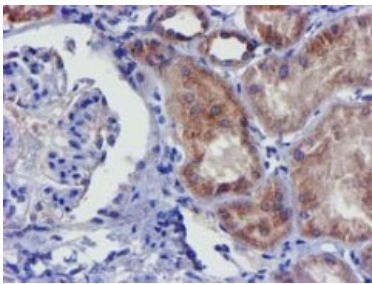
ab119743, at 1/150 dilution, staining CHCHD5 in paraffin-embedded Human bladder carcinoma tissue by immunohistochemistry

Immunohistochemistry (Formalin/PFA-fixed paraffin-embedded sections) - Anti-CHCHD5 antibody [3H3] (ab119743)



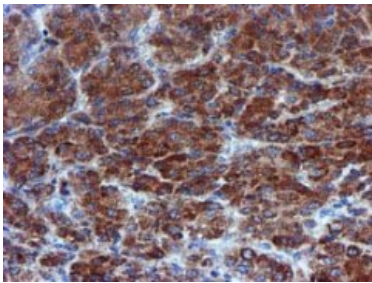
ab119743, at 1/150 dilution, staining
CHCHD5 in paraffin-embedded Human
endometrium tissue by immunohistochemistry

Immunohistochemistry (Formalin/PFA-fixed paraffin-
embedded sections) - Anti-CHCHD5 antibody [3H3]
(ab119743)



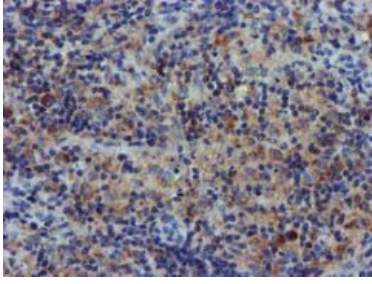
ab119743, at 1/150 dilution, staining
CHCHD5 in paraffin-embedded Human
kidney tissue by immunohistochemistry

Immunohistochemistry (Formalin/PFA-fixed paraffin-
embedded sections) - Anti-CHCHD5 antibody [3H3]
(ab119743)



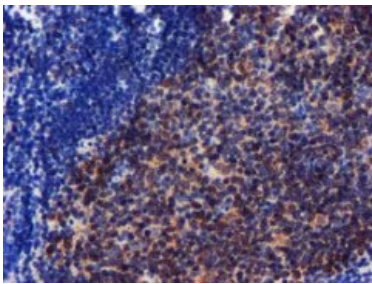
ab119743, at 1/150 dilution, staining
CHCHD5 in paraffin-embedded Human liver
carcinoma tissue by immunohistochemistry

Immunohistochemistry (Formalin/PFA-fixed paraffin-
embedded sections) - Anti-CHCHD5 antibody [3H3]
(ab119743)



ab119743, at 1/150 dilution, staining
CHCHD5 in paraffin-embedded Human
lymphoma tissue by immunohistochemistry

Immunohistochemistry (Formalin/PFA-fixed paraffin-
embedded sections) - Anti-CHCHD5 antibody [3H3]
(ab119743)



ab119743, at 1/150 dilution, staining
CHCHD5 in paraffin-embedded Human tonsil
tissue by immunohistochemistry

Immunohistochemistry (Formalin/PFA-fixed paraffin-
embedded sections) - Anti-CHCHD5 antibody [3H3]
(ab119743)

Please note: All products are "FOR RESEARCH USE ONLY AND ARE NOT INTENDED FOR DIAGNOSTIC OR THERAPEUTIC USE"

Our Abpromise to you: Quality guaranteed and expert technical support

- Replacement or refund for products not performing as stated on the datasheet
- Valid for 12 months from date of delivery
- Response to your inquiry within 24 hours
- We provide support in Chinese, English, French, German, Japanese and Spanish
- Extensive multi-media technical resources to help you
- We investigate all quality concerns to ensure our products perform to the highest standards

If the product does not perform as described on this datasheet, we will offer a refund or replacement. For full details of the Abpromise, please visit <https://www.abcam.cn/abpromise> or contact our technical team.

Terms and conditions

- Guarantee only valid for products bought direct from Abcam or one of our authorized distributors