

Product datasheet

Anti-NUDT6 antibody [7F4] ab119421

4 图像

概述

产品名称	Anti-NUDT6抗体[7F4]
描述	小鼠单克隆抗体[7F4] to NUDT6
宿主	Mouse
经测试应用	适用于: WB, IHC-P
种属反应性	与反应: Human
免疫原	Full length Human recombinant protein produced in HEK293T cells (NP_009014).
阳性对照	Human endometrium, endometrium adenocarcinoma and bladder carcinoma tissues; HEK293T cell lysate transfected with pCMV6-ENTRY NUDT6 cDNA.
常规说明	Dilute in PBS (pH7.3) before use. Stable for 12 months from date of receipt.

性能

形式	Liquid
存放说明	Shipped at 4°C. Upon delivery aliquot and store at -20°C. Avoid repeated freeze / thaw cycles.
存储溶液	pH: 7.30 Preservative: 0.02% Sodium azide Constituents: 1% BSA, 48% PBS, 50% Glycerol
纯度	Protein G purified
纯化说明	ab119421 is purified from Mouse ascites fluid by affinity chromatography.
克隆	单克隆
克隆编号	7F4
同种型	IgG1

应用

Our [Abpromise guarantee](#) covers the use of **ab119421** in the following tested applications.

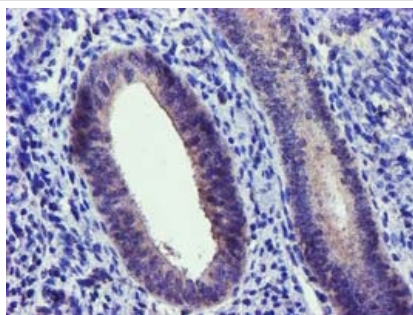
The application notes include recommended starting dilutions; optimal dilutions/concentrations should be determined by the end user.

应用	Ab评论	说明
WB		1/2000. Predicted molecular weight: 36 kDa.
IHC-P		1/150.

## 靶标

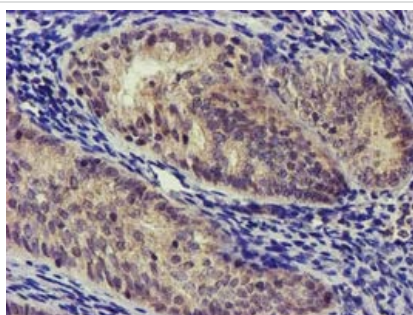
功能	May contribute to the regulation of cell proliferation.
组织特异性	Detected in liver, kidney and esophagus (at protein level). Ubiquitous.
序列相似性	Belongs to the Nudix hydrolase family. Contains 1 nudix hydrolase domain.
细胞定位	Cytoplasm. Nucleus. Mitochondrion. Subcellular location may vary between isoforms.

## 图片



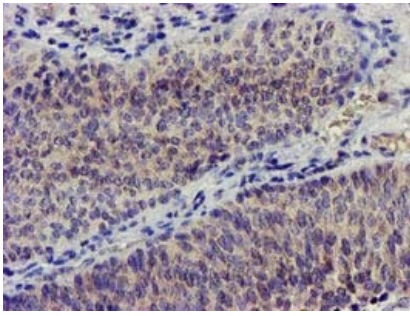
ab119421 at 1/150 dilution staining NUDT6 in Paraffin-embedded Human endometrium tissue by Immunohistochemistry.

Immunohistochemistry (Formalin/PFA-fixed paraffin-embedded sections) - Anti-NUDT6 antibody [7F4] (ab119421)



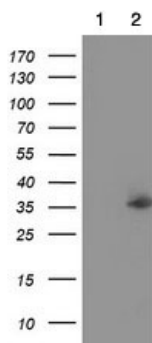
ab119421 at 1/150 dilution staining NUDT6 in Paraffin-embedded Human endometrium adenocarcinoma tissue by Immunohistochemistry.

Immunohistochemistry (Formalin/PFA-fixed paraffin-embedded sections) - Anti-NUDT6 antibody [7F4] (ab119421)



ab119421 at 1/150 dilution staining NUDT6 in Paraffin-embedded Human bladder carcinoma tissue by Immunohistochemistry.

Immunohistochemistry (Formalin/PFA-fixed paraffin-embedded sections) - Anti-NUDT6 antibody [7F4] (ab119421)



Western blot - Anti-NUDT6 antibody [7F4] (ab119421)

**All lanes :** Anti-NUDT6 antibody [7F4] (ab119421) at 1/2000 dilution

**Lane 1 :** HEK293T cell lysate transfected with pCMV6-ENTRY control cDNA

**Lane 2 :** HEK293T cell lysate transfected with pCMV6-ENTRY NUDT6 cDNA

Lysates/proteins at 5 µg per lane.

**Predicted band size:** 36 kDa

HEK293T cell lysates were generated from transient transfection of the cDNA clone (RC203470)

**Please note:** All products are "FOR RESEARCH USE ONLY AND ARE NOT INTENDED FOR DIAGNOSTIC OR THERAPEUTIC USE"

### Our Abpromise to you: Quality guaranteed and expert technical support

- Replacement or refund for products not performing as stated on the datasheet
- Valid for 12 months from date of delivery
- Response to your inquiry within 24 hours
- We provide support in Chinese, English, French, German, Japanese and Spanish
- Extensive multi-media technical resources to help you
- We investigate all quality concerns to ensure our products perform to the highest standards

If the product does not perform as described on this datasheet, we will offer a refund or replacement. For full details of the Abpromise, please visit <https://www.abcam.cn/abpromise> or contact our technical team.

## Terms and conditions

---

- Guarantee only valid for products bought direct from Abcam or one of our authorized distributors