

Product datasheet

Anti-ILVBL antibody [8A12] ab119241

17 图像

概述

产品名称	Anti-ILVBL抗体[8A12]
描述	小鼠单克隆抗体[8A12] to ILVBL
宿主	Mouse
经测试应用	适用于: WB, IHC-P, Flow Cyt, ICC/IF
种属反应性	与反应: Rat, Human, Monkey
免疫原	Full length recombinant Human ILVBL (NP_006835) produced in HEK293T cells.
阳性对照	HEK293T and COS7 cells transiently transfected by pCMV6-ENTRY ILVBL. HepG2, A549, COS7, and PC12 cell line extracts. Human breast, breast carcinoma, colon adenocarcinoma, kidney, liver, liver carcinoma, pancreas, prostate, thyroid, endometrium carcinoma, bladder carcinoma and tonsil tissue. HeLa and Jurkat cells.

性能

形式	Liquid
存放说明	Shipped at 4°C. Upon delivery aliquot and store at -20°C. Avoid repeated freeze / thaw cycles.
存储溶液	pH: 7.30 Preservative: 0.02% Sodium azide Constituents: 48% PBS, 50% Glycerol, 1% BSA
纯度	Protein A purified
纯化说明	Purified from mouse ascites fluid
克隆	单克隆
克隆编号	8A12
同种型	IgG2b

应用

Our [Abpromise guarantee](#) covers the use of **ab119241** in the following tested applications.

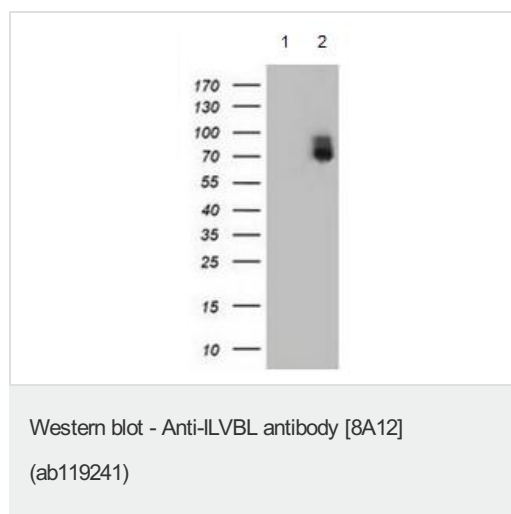
The application notes include recommended starting dilutions; optimal dilutions/concentrations should be determined by the end user.

应用	Ab评论	说明
WB		1/500 - 1/2000. Predicted molecular weight: 68 kDa.
IHC-P		1/150.
Flow Cyt		1/100. <a href="#">ab170192</a> - Mouse monoclonal IgG2b, is suitable for use as an isotype control with this antibody.
ICC/IF		1/100.

## 靶标

组织特异性	Expressed in all tissues tested, with highest expression in heart, pancreas and placenta.
序列相似性	Belongs to the TPP enzyme family.
细胞定位	Membrane.

## 图片



**All lanes** : Anti-ILVBL antibody [8A12] (ab119241) at 1/500 dilution

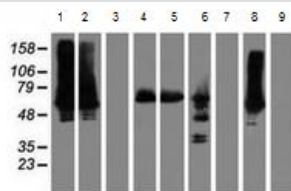
**Lane 1** : HEK293T cells transfected with control pCMV6-ENTRY

**Lane 2** : HEK293T cells transfected with pCMV6-ENTRY ILVBL

Lysates/proteins at 5 µg per lane.

**Predicted band size:** 68 kDa

HEK293T cell lysates were generated from transient transfection of the cDNA clone (RC203987)



Western blot - Anti-ILVBL antibody [8A12]  
(ab119241)

**All lanes :** Anti-ILVBL antibody [8A12]

(ab119241) at 1/500 dilution

**Lane 1 :** HepG2 cell line extract

**Lane 2 :** HeLa cell line extract

**Lane 3 :** SVT2 cell line extract

**Lane 4 :** A549 cell line extract

**Lane 5 :** COS7 cell line extract

**Lane 6 :** Jurkat cell line extract

**Lane 7 :** MDCK cell line extract

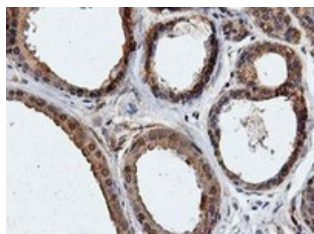
**Lane 8 :** PC12 cell line extract

**Lane 9 :** MCF7 cell line extract

Lysates/proteins at 35 µg per lane.

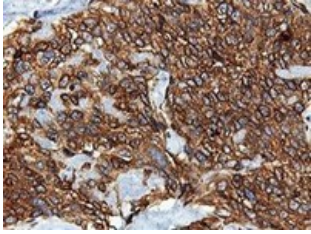
**Predicted band size:** 68 kDa

HEK293T cell lysates were generated from  
transient transfection of the cDNA clone  
(RC203987)



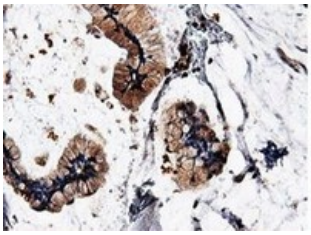
Immunohistochemistry (Formalin/PFA-fixed paraffin-  
embedded sections) - Anti-ILVBL antibody [8A12]  
(ab119241)

Paraffin embedded Human breast tissue  
labelled with ab119241 at 1/150 dilution.



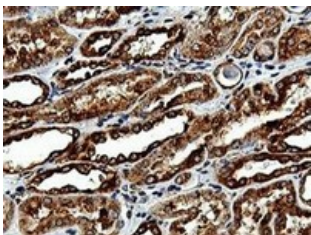
Paraffin embedded Human breast adenocarcinoma tissue labelled with ab119241 at 1/150 dilution.

Immunohistochemistry (Formalin/PFA-fixed paraffin-embedded sections) - Anti-ILVBL antibody [8A12] (ab119241)



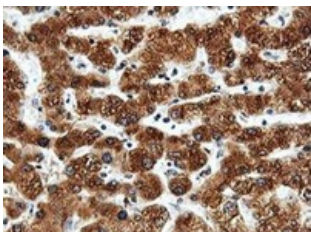
Paraffin embedded Human colon carcinoma tissue labelled with ab119241 at 1/150 dilution.

Immunohistochemistry (Formalin/PFA-fixed paraffin-embedded sections) - Anti-ILVBL antibody [8A12] (ab119241)



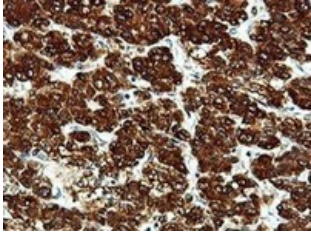
Paraffin embedded Human kidney tissue labelled with ab119241 at 1/150 dilution.

Immunohistochemistry (Formalin/PFA-fixed paraffin-embedded sections) - Anti-ILVBL antibody [8A12] (ab119241)



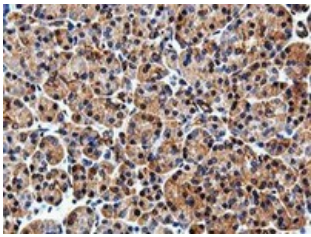
Paraffin embedded Human liver tissue labelled with ab119241 at 1/150 dilution.

Immunohistochemistry (Formalin/PFA-fixed paraffin-embedded sections) - Anti-ILVBL antibody [8A12] (ab119241)



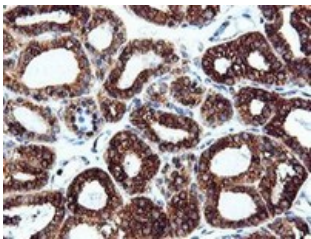
Paraffin embedded Human liver carcinoma tissue labelled with ab119241 at 1/150 dilution..

Immunohistochemistry (Formalin/PFA-fixed paraffin-embedded sections) - Anti-ILVBL antibody [8A12] (ab119241)



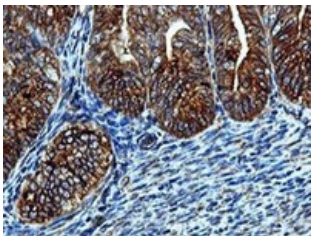
Paraffin embedded Human pancreas tissue labelled with ab119241 at 1/150 dilution.

Immunohistochemistry (Formalin/PFA-fixed paraffin-embedded sections) - Anti-ILVBL antibody [8A12] (ab119241)



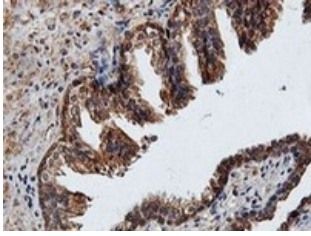
Paraffin embedded Human thyroid carcinoma tissue labelled with ab119241 at 1/150 dilution.

Immunohistochemistry (Formalin/PFA-fixed paraffin-embedded sections) - Anti-ILVBL antibody [8A12] (ab119241)



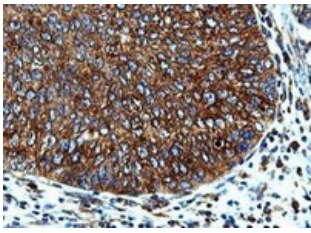
Paraffin embedded Human endometrium carcinoma tissue labelled with ab119241 at 1/150 dilution.

Immunohistochemistry (Formalin/PFA-fixed paraffin-embedded sections) - Anti-ILVBL antibody [8A12] (ab119241)



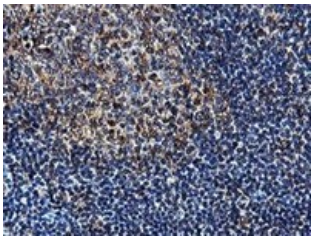
Paraffin embedded Human prostate tissue  
labelled with ab119241 at 1/150 dilution.

Immunohistochemistry (Formalin/PFA-fixed paraffin-  
embedded sections) - Anti-ILVBL antibody [8A12]  
(ab119241)



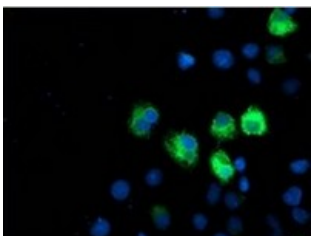
Paraffin embedded Human bladder  
cacinoma tissue labelled with ab119241 at  
1/150 dilution.

Immunohistochemistry (Formalin/PFA-fixed paraffin-  
embedded sections) - Anti-ILVBL antibody [8A12]  
(ab119241)



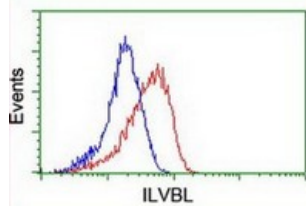
Paraffin embedded Human tonsil tissue  
labelled with ab119241 at 1/150 dilution.

Immunohistochemistry (Formalin/PFA-fixed paraffin-  
embedded sections) - Anti-ILVBL antibody [8A12]  
(ab119241)



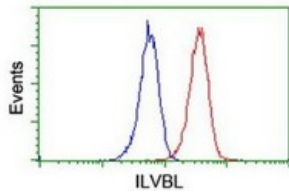
Immunofluorescence staining of COS7 cells  
transiently transfected by pCMV6-ENTRY  
ILVBL, labelled with ab119241 at 1/100  
dilution.

Immunocytochemistry/ Immunofluorescence - Anti-  
ILVBL antibody [8A12] (ab119241)



Flow Cytometry - Anti-ILVBL antibody [8A12]  
(ab119241)

Flow cytometric analysis of HeLa cells labelled with ab119241 at 1/100 dilution (Red) or nonspecific negative control antibody (Blue).



Flow Cytometry - Anti-ILVBL antibody [8A12]  
(ab119241)

Flow cytometric analysis of Jurkat cells labelled with ab119241 at 1/100 dilution (Red) or nonspecific negative control antibody (Blue).

**Please note:** All products are "FOR RESEARCH USE ONLY AND ARE NOT INTENDED FOR DIAGNOSTIC OR THERAPEUTIC USE"

### Our Abpromise to you: Quality guaranteed and expert technical support

- Replacement or refund for products not performing as stated on the datasheet
- Valid for 12 months from date of delivery
- Response to your inquiry within 24 hours
- We provide support in Chinese, English, French, German, Japanese and Spanish
- Extensive multi-media technical resources to help you
- We investigate all quality concerns to ensure our products perform to the highest standards

If the product does not perform as described on this datasheet, we will offer a refund or replacement. For full details of the Abpromise, please visit <https://www.abcam.cn/abpromise> or contact our technical team.

### Terms and conditions

- Guarantee only valid for products bought direct from Abcam or one of our authorized distributors