

Product datasheet

Anti-Sorbitol Dehydrogenase antibody [17E7] ab118063

5 图像

概述

产品名称	Anti-Sorbitol Dehydrogenase抗体[17E7]
描述	小鼠单克隆抗体[17E7] to Sorbitol Dehydrogenase
宿主	Mouse
经测试应用	适用于: Flow Cyt, ICC/IF
种属反应性	与反应: Human
免疫原	Recombinant full length Human Sorbitol Dehydrogenase produced in HEK293T cells (NP_003095).
阳性对照	HEK2934T and COS7 cells transiently transfected by pCMV6-ENTRY Sorbitol Dehydrogenase; HeLa, Jurkat and HepG2 cells.
常规说明	Stable for 12 months from date of receipt.

性能

形式	Liquid
存放说明	Shipped at 4°C. Upon delivery aliquot and store at -20°C. Avoid repeated freeze / thaw cycles.
存储溶液	pH: 7.30 Preservative: 0.02% Sodium azide Constituents: 50% Glycerol, 48% PBS, 1% BSA
纯度	IgG fraction
纯化说明	ab118063 is purified from Mouse ascites fluids by affinity chromatography.
克隆	单克隆
克隆编号	17E7
同种型	IgG1

应用

Our [Abpromise guarantee](#) covers the use of **ab118063** in the following tested applications.

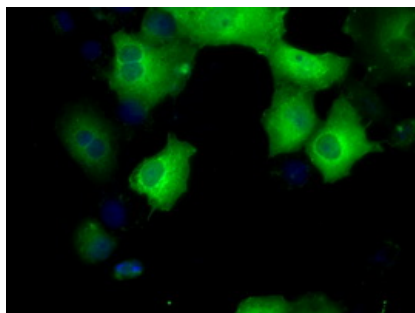
The application notes include recommended starting dilutions; optimal dilutions/concentrations should be determined by the end user.

应用	Ab评论	说明
Flow Cyt		1/100. ab170190 - Mouse monoclonal IgG1, is suitable for use as an isotype control with this antibody.
ICC/IF		1/100.

靶标

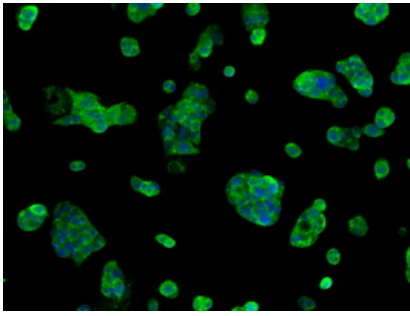
功能	Converts sorbitol to fructose. Part of the polyol pathway that plays an important role in sperm physiology. May play a role in the sperm motility by providing an energetic source for sperm.
组织特异性	Expressed in kidney and epithelial cells of both benign and malignant prostate tissue. Expressed in epididymis (at protein level).
序列相似性	Belongs to the zinc-containing alcohol dehydrogenase family.
细胞定位	Mitochondrion membrane. Cell projection > cilium > flagellum. Associated with mitochondria of the midpiece and near the plasma membrane in the principal piece of the flagellum. Also found in the epididymosome, secreted by the epididymal epithelium and that transfers proteins from the epididymal fluid to the sperm surface.

图片



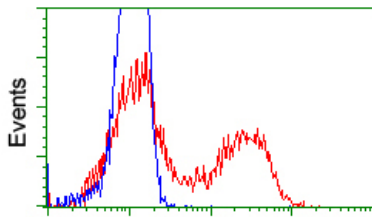
ab118063 at 1/100 dilution staining Sorbitol Dehydrogenase in COS7 cells transiently transfected by pCMV6-ENTRY Sorbitol Dehydrogenase by Immunofluorescence.

Immunocytochemistry/ Immunofluorescence - Anti-Sorbitol Dehydrogenase antibody [17E7] (ab118063)



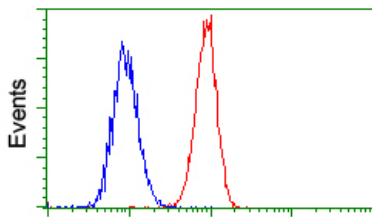
Immunocytochemistry/ Immunofluorescence - Anti-Sorbitol Dehydrogenase antibody [17E7] (ab118063)

ab118063 at 1/100 dilution staining Sorbitol Dehydrogenase in HepG2 cells by Immunofluorescence.



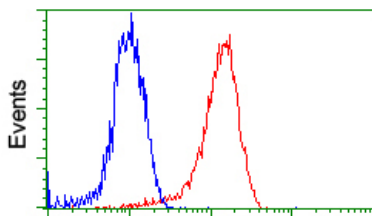
Flow Cytometry - Anti-Sorbitol Dehydrogenase antibody [17E7] (ab118063)

ab118063 at 1/100 dilution staining Sorbitol Dehydrogenase in HEK293T cells transfected with either pCMV6-ENTRY Sorbitol Dehydrogenase (Red) or empty vector control plasmid (Blue) by Flow cytometry.



Flow Cytometry - Anti-Sorbitol Dehydrogenase antibody [17E7] (ab118063)

ab118063 at 1/100 dilution staining Sorbitol Dehydrogenase in HeLa cells by Flow cytometry (Red) compared to a nonspecific negative control antibody (Blue).



Flow Cytometry - Anti-Sorbitol Dehydrogenase antibody [17E7] (ab118063)

ab118063 at 1/100 dilution staining Sorbitol Dehydrogenase in Jurkat cells by Flow cytometry (Red) compared to a nonspecific negative control antibody (Blue).

Please note: All products are "FOR RESEARCH USE ONLY AND ARE NOT INTENDED FOR DIAGNOSTIC OR THERAPEUTIC USE"

Our Abpromise to you: Quality guaranteed and expert technical support

- Replacement or refund for products not performing as stated on the datasheet
- Valid for 12 months from date of delivery
- Response to your inquiry within 24 hours

- We provide support in Chinese, English, French, German, Japanese and Spanish
- Extensive multi-media technical resources to help you
- We investigate all quality concerns to ensure our products perform to the highest standards

If the product does not perform as described on this datasheet, we will offer a refund or replacement. For full details of the Abpromise, please visit <https://www.abcam.cn/abpromise> or contact our technical team.

Terms and conditions

- Guarantee only valid for products bought direct from Abcam or one of our authorized distributors