

## Product datasheet

# Anti-Laminin 2 alpha antibody [2D4] ab117608

### 1 图像

#### 概述

产品名称	Anti-Laminin 2 alpha抗体[2D4]
描述	小鼠单克隆抗体[2D4] to Laminin 2 alpha
宿主	Mouse
经测试应用	适用于: WB, ELISA, IHC-P
种属反应性	与反应: Human
免疫原	Recombinant Human Laminin Alpha 2 (NP_000417.2).
阳性对照	Human Placenta (Trophoblast) tissue.

#### 性能

形式	Liquid
存放说明	Shipped at 4°C. Upon delivery aliquot and store at -20°C. Avoid freeze / thaw cycles.
存储溶液	pH: 7.20 Constituent: 99% PBS
纯度	Protein A purified
克隆	单克隆
克隆编号	2D4
同种型	IgG1
轻链类型	kappa

#### 应用

Our [Abpromise guarantee](#) covers the use of **ab117608** in the following tested applications.

The application notes include recommended starting dilutions; optimal dilutions/concentrations should be determined by the end user.

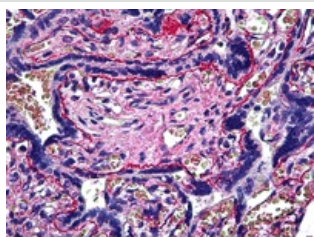
应用	Ab评论	说明
WB		Use at an assay dependent concentration. Predicted molecular weight: 344 kDa.
ELISA		Use at an assay dependent concentration.

应用	Ab评论	说明
IHC-P		Use a concentration of 5 µg/ml.

## 靶标

功能	Binding to cells via a high affinity receptor, laminin is thought to mediate the attachment, migration and organization of cells into tissues during embryonic development by interacting with other extracellular matrix components.
组织特异性	Placenta, striated muscle, peripheral nerve, cardiac muscle, pancreas, lung, spleen, kidney, adrenal gland, skin, testis, meninges, choroid plexus, and some other regions of the brain; not in liver, thymus and bone.
疾病相关	Defects in LAMA2 are the cause of merosin-deficient congenital muscular dystrophy type 1A (MDC1A) [MIM:607855]. MDC1A is characterized by difficulty walking, hypotonia, proximal weakness, hyporeflexia, and white matter hypodensity on MRI.
序列相似性	Contains 17 laminin EGF-like domains. Contains 5 laminin G-like domains. Contains 2 laminin IV type A domains. Contains 1 laminin N-terminal domain.
结构域	The alpha-helical domains I and II are thought to interact with other laminin chains to form a coiled coil structure. Domains VI, IV and G are globular.
细胞定位	Secreted > extracellular space > extracellular matrix > basement membrane. Major component.

## 图片



ab117608, at 5 µg/ml, staining Laminin 2 alpha in Formalin-fixed, Paraffin-embedded Human Placenta (Trophoblast) tissue by Immunohistochemistry.

Immunohistochemistry (Formalin/PFA-fixed paraffin-embedded sections) - Anti-Laminin 2 alpha antibody [2D4] (ab117608)

**Please note:** All products are "FOR RESEARCH USE ONLY AND ARE NOT INTENDED FOR DIAGNOSTIC OR THERAPEUTIC USE"

## Our Abpromise to you: Quality guaranteed and expert technical support

- Replacement or refund for products not performing as stated on the datasheet
- Valid for 12 months from date of delivery
- Response to your inquiry within 24 hours

- We provide support in Chinese, English, French, German, Japanese and Spanish
- Extensive multi-media technical resources to help you
- We investigate all quality concerns to ensure our products perform to the highest standards

If the product does not perform as described on this datasheet, we will offer a refund or replacement. For full details of the Abpromise, please visit <https://www.abcam.cn/abpromise> or contact our technical team.

### **Terms and conditions**

---

- Guarantee only valid for products bought direct from Abcam or one of our authorized distributors