

Product datasheet

Anti-LDHA antibody ab116722

1 图像

概述

产品名称	Anti-LDHA抗体
描述	兔多克隆抗体to LDHA
宿主	Rabbit
经测试应用	适用于: WB
种属反应性	与反应: Human
免疫原	Synthetic peptide conjugated to KLH, corresponding to a region within C-terminal amino acids 203-232 of Human LDHA (NP_005557.1, NP_001158887.1).
阳性对照	MDA-MB231 cell line lysate

性能

形式	Liquid
存放说明	Shipped at 4°C. Store at 4°C (up to 6 months). Store at -20°C long term.
存储溶液	Preservative: 0.09% Sodium azide Constituent: 99% PBS
纯度	Immunogen affinity purified
纯化说明	ab116722 is purified through a Protein A column, followed by peptide affinity purification.
克隆	多克隆
同种型	IgG

应用

Our [Abpromise guarantee](#) covers the use of **ab116722** in the following tested applications.

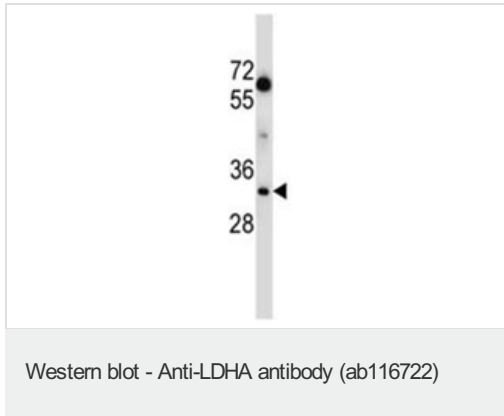
The application notes include recommended starting dilutions; optimal dilutions/concentrations should be determined by the end user.

应用	Ab评论	说明
WB		1/100 - 1/500. Predicted molecular weight: 37 kDa.

靶标

通路	Fermentation; pyruvate fermentation to lactate; (S)-lactate from pyruvate: step 1/1.
疾病相关	Defects in LDHA are the cause of glycogen storage disease type 11 (GSD11) [MIM:612933]. A metabolic disorder that results in exertional myoglobinuria, pain, cramps and easy fatigue.
序列相似性	Belongs to the LDH/MDH superfamily. LDH family.
翻译后修饰	ISGylated.
细胞定位	Cytoplasm.

图片



Anti-LDHA antibody (ab116722) at 1/100
dilution + MDA-MB231 cell line lysate at 35 µg

Predicted band size: 37 kDa

Please note: All products are "FOR RESEARCH USE ONLY AND ARE NOT INTENDED FOR DIAGNOSTIC OR THERAPEUTIC USE"

Our Abpromise to you: Quality guaranteed and expert technical support

- Replacement or refund for products not performing as stated on the datasheet
- Valid for 12 months from date of delivery
- Response to your inquiry within 24 hours
- We provide support in Chinese, English, French, German, Japanese and Spanish
- Extensive multi-media technical resources to help you
- We investigate all quality concerns to ensure our products perform to the highest standards

If the product does not perform as described on this datasheet, we will offer a refund or replacement. For full details of the Abpromise, please visit <https://www.abcam.cn/abpromise> or contact our technical team.

Terms and conditions

- Guarantee only valid for products bought direct from Abcam or one of our authorized distributors