

Product datasheet

Anti-CD45RB antibody [16A] (Biotin) ab112466

1 图像

概述

产品名称	Anti-CD45RB抗体[16A] (Biotin)
描述	大鼠单克隆抗体[16A] to CD45RB (Biotin)
宿主	Rat
偶联物	Biotin
经测试应用	适用于: IP, IHC-P, IHC-Fr, Flow Cyt
种属反应性	与反应: Mouse
免疫原	Mouse TH ₂ cell clones, final boost with TH ₂ clone D10.
阳性对照	Mouse (BALB/c) spleen cells.

性能

形式	Liquid
存放说明	Shipped at 4°C. Store at +4°C short term (1-2 weeks). Store at -20°C or -80°C. Avoid freeze / thaw cycle.
存储溶液	Preservative: 0.02% Sodium azide Constituents: 0.5% BSA, 98% PBS
纯度	Protein G purified
克隆	单克隆
克隆编号	16A
骨髓瘤	Ag8.653
同种型	IgG2a

应用

Our [Abpromise guarantee](#) covers the use of **ab112466** in the following tested applications.

The application notes include recommended starting dilutions; optimal dilutions/concentrations should be determined by the end user.

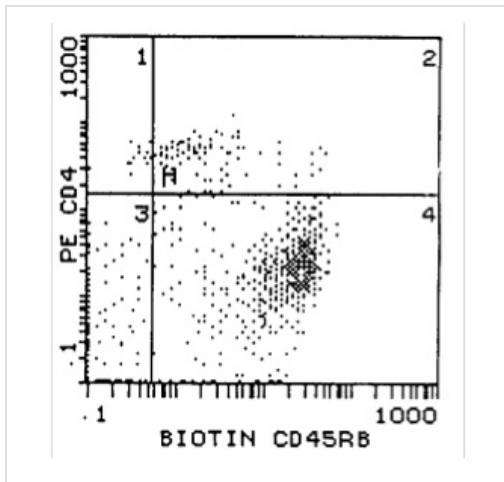
应用	Ab评论	说明
IP		Use at an assay dependent concentration.

应用	Ab评论	说明
IHC-P		Use at an assay dependent concentration.
IHC-Fr		Use at an assay dependent concentration. , use acetone fixation.
Flow Cyt		Use 1µg for 10 ⁶ cells. ab18445 - Rat monoclonal IgG2a, is suitable for use as an isotype control with this antibody.

靶标

功能	Protein tyrosine-protein phosphatase required for T-cell activation through the antigen receptor. Acts as a positive regulator of T-cell coactivation upon binding to DPP4. The first PTPase domain has enzymatic activity, while the second one seems to affect the substrate specificity of the first one. Upon T-cell activation, recruits and dephosphorylates SKAP1 and FYN.
疾病相关	Defects in PTPRC are a cause of severe combined immunodeficiency autosomal recessive T-cell-negative/B-cell-positive/NK-cell-positive (T(-)B(+)NK(+)) SCID [MIM:608971]. A form of severe combined immunodeficiency (SCID), a genetically and clinically heterogeneous group of rare congenital disorders characterized by impairment of both humoral and cell-mediated immunity, leukopenia, and low or absent antibody levels. Patients present in infancy recurrent, persistent infections by opportunistic organisms. The common characteristic of all types of SCID is absence of T-cell-mediated cellular immunity due to a defect in T-cell development. Genetic variations in PTPRC are involved in multiple sclerosis susceptibility (MS) [MIM:126200]. MS is a neurodegenerative disorder characterized by the gradual accumulation of focal plaques of demyelination particularly in the periventricular areas of the brain. Peripheral nerves are not affected. Onset usually in third or fourth decade with intermittent progression over an extended period. The cause is still uncertain.
序列相似性	Belongs to the protein-tyrosine phosphatase family. Receptor class 1/6 subfamily. Contains 2 fibronectin type-III domains. Contains 2 tyrosine-protein phosphatase domains.
结构域	The first PTPase domain interacts with SKAP1.
翻译后修饰	Heavily N- and O-glycosylated.
细胞定位	Membrane. Membrane raft. Colocalized with DPP4 in membrane rafts.

图片



ab112466 at $1\mu\text{g}/10^6$ cells staining CD45RB in Mouse spleen cells (BALB/c strain) by Flow Cytometry.

Percentage of cells stained above control (Biotin Rat IgG2a): 79.5%.

Flow Cytometry - Anti-CD45RB antibody [16A]
(Biotin) (ab112466)

Please note: All products are "FOR RESEARCH USE ONLY AND ARE NOT INTENDED FOR DIAGNOSTIC OR THERAPEUTIC USE"

Our Abpromise to you: Quality guaranteed and expert technical support

- Replacement or refund for products not performing as stated on the datasheet
- Valid for 12 months from date of delivery
- Response to your inquiry within 24 hours
- We provide support in Chinese, English, French, German, Japanese and Spanish
- Extensive multi-media technical resources to help you
- We investigate all quality concerns to ensure our products perform to the highest standards

If the product does not perform as described on this datasheet, we will offer a refund or replacement. For full details of the Abpromise, please visit <https://www.abcam.cn/abpromise> or contact our technical team.

Terms and conditions

- Guarantee only valid for products bought direct from Abcam or one of our authorized distributors