


Product datasheet

Anti-alpha smooth muscle Actin antibody ab112022

2 Abreviews 3 图像

概述

产品名称	Anti-alpha smooth muscle Actin抗体
描述	山羊多克隆抗体to alpha smooth muscle Actin
宿主	Goat
经测试应用	适用于: WB, IHC-P
种属反应性	与反应: Human 预测可用于: Mouse, Rat, Dog 
免疫原	Synthetic peptide: EEEDSTALVC , corresponding to N terminal amino acids 3-12 of Human alpha smooth muscle Actin. Run BLAST with Run BLAST with
阳性对照	Human Colon, smooth muscle and Human Vessel tissues; Human Duodenum lysate.

性能

形式	Liquid
存放说明	Shipped at 4°C. Upon delivery aliquot and store at -20°C. Avoid freeze / thaw cycles.
存储溶液	pH: 7.30 Preservative: 0.02% Sodium azide Constituents: 99% Tris buffered saline, 0.5% BSA
纯度	Immunogen affinity purified
克隆	多克隆
同种型	IgG

应用

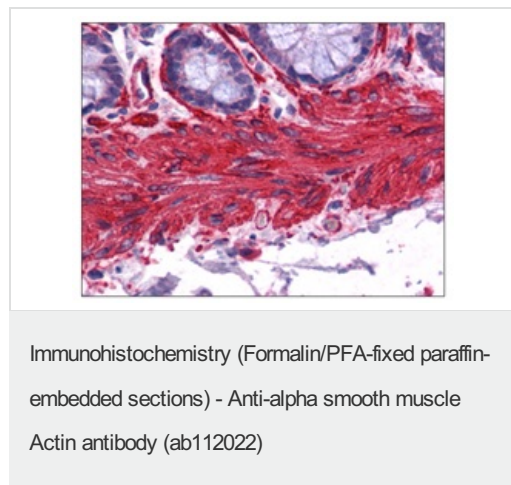
Our [Abpromise guarantee](#) covers the use of **ab112022** in the following tested applications.
The application notes include recommended starting dilutions; optimal dilutions/concentrations should be determined by the end user.

应用	Ab评论	说明
WB		Use a concentration of 0.3 - 1 µg/ml. Predicted molecular weight: 42 kDa.
IHC-P		Use a concentration of 2.5 µg/ml. Perform heat mediated antigen retrieval with citrate buffer pH 6 before commencing with IHC staining protocol.

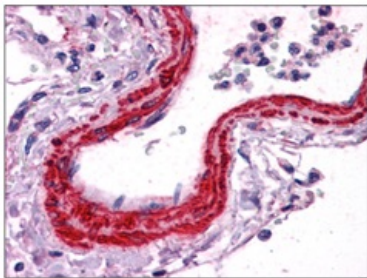
靶标

功能	Actins are highly conserved proteins that are involved in various types of cell motility and are ubiquitously expressed in all eukaryotic cells.
疾病相关	Defects in ACTA2 are the cause of aortic aneurysm familial thoracic type 6 (AAT6) [MIM:611788]. AATs are characterized by permanent dilation of the thoracic aorta usually due to degenerative changes in the aortic wall. They are primarily associated with a characteristic histologic appearance known as 'medial necrosis' or 'Erdheim cystic medial necrosis' in which there is degeneration and fragmentation of elastic fibers, loss of smooth muscle cells, and an accumulation of basophilic ground substance.
序列相似性	Belongs to the actin family.
细胞定位	Cytoplasm > cytoskeleton.

图片

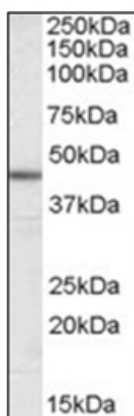


Immunohistochemical expression of alpha smooth muscle Actin in Formalin-Fixed, Paraffin-Embedded Human Colon, smooth muscle using ab112022 at 2.5 µg/ml.



Immunohistochemistry (Formalin/PFA-fixed paraffin-embedded sections) - Anti-alpha smooth muscle Actin antibody (ab112022)

Immunohistochemical expression of alpha smooth muscle Actin in Formalin-Fixed, Paraffin-Embedded Human vessel using ab112022 at 2.5 µg/ml.



Western blot - Anti-alpha smooth muscle Actin antibody (ab112022)

Anti-alpha smooth muscle Actin antibody (ab112022) at 0.1 µg/ml + Human Duodenum lysate at 35 µg

Developed using the ECL technique.

Predicted band size: 42 kDa

Please note: All products are "FOR RESEARCH USE ONLY AND ARE NOT INTENDED FOR DIAGNOSTIC OR THERAPEUTIC USE"

Our Abpromise to you: Quality guaranteed and expert technical support

- Replacement or refund for products not performing as stated on the datasheet
- Valid for 12 months from date of delivery
- Response to your inquiry within 24 hours
- We provide support in Chinese, English, French, German, Japanese and Spanish
- Extensive multi-media technical resources to help you
- We investigate all quality concerns to ensure our products perform to the highest standards

If the product does not perform as described on this datasheet, we will offer a refund or replacement. For full details of the Abpromise, please visit <https://www.abcam.cn/abpromise> or contact our technical team.

Terms and conditions

- Guarantee only valid for products bought direct from Abcam or one of our authorized distributors