

Product datasheet

Anti-ELOVL2 antibody ab111162

1 图像

概述

产品名称	Anti-ELOVL2抗体
描述	兔多克隆抗体to ELOVL2
宿主	Rabbit
经测试应用	适用于: IHC-P
种属反应性	与反应: Human
免疫原	Synthetic peptide derived from an internal region of Human ELOVL2.
阳性对照	Human testis tissue.

性能

形式	Liquid
存放说明	Shipped at 4°C. Store at -20°C. Stable for 12 months at -20°C.
存储溶液	pH: 7.40 Preservative: 0.02% Sodium azide Constituents: 49.1% PBS, 50% Glycerol, 0.88% Sodium chloride Note: PBS (without Mg ²⁺ and Ca ²⁺)
纯度	Immunogen affinity purified
纯化说明	ab111162 was affinity-purified from Rabbit antiserum by affinity-chromatography using epitope-specific immunogen.
克隆	多克隆
同种型	IgG

应用

Our [Abpromise guarantee](#) covers the use of **ab111162** in the following tested applications.

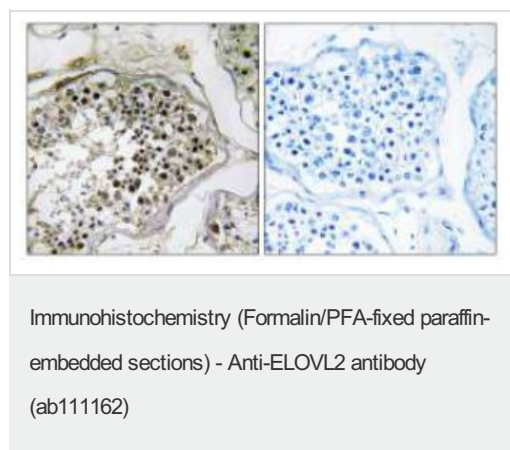
The application notes include recommended starting dilutions; optimal dilutions/concentrations should be determined by the end user.

应用	Ab评论	说明
IHC-P		1/50 - 1/100. Perform heat mediated antigen retrieval with citrate buffer pH 6 before commencing with IHC staining protocol.

靶标

功能	Condensing enzyme that catalyzes the synthesis of polyunsaturated very long chain fatty acid (C20- and C22-PUFA). Acts specifically toward polyunsaturated acyl-CoA with the higher activity toward C20:4(n-6) acyl-CoA.
组织特异性	Liver and testis.
序列相似性	Belongs to the ELO family.
结构域	The di-lysine motif may confer endoplasmic reticulum localization.
细胞定位	Endoplasmic reticulum membrane.

图片



ab111162 at 1/50 dilution staining ELOVL2 in paraffin-embedded Human testis tissue by Immunohistochemistry. The image on the right is treated with synthesized peptide.

Please note: All products are "FOR RESEARCH USE ONLY AND ARE NOT INTENDED FOR DIAGNOSTIC OR THERAPEUTIC USE"

Our Abpromise to you: Quality guaranteed and expert technical support

- Replacement or refund for products not performing as stated on the datasheet
- Valid for 12 months from date of delivery
- Response to your inquiry within 24 hours
- We provide support in Chinese, English, French, German, Japanese and Spanish
- Extensive multi-media technical resources to help you
- We investigate all quality concerns to ensure our products perform to the highest standards

If the product does not perform as described on this datasheet, we will offer a refund or replacement. For full details of the Abpromise, please visit <https://www.abcam.cn/abpromise> or contact our technical team.

Terms and conditions

- Guarantee only valid for products bought direct from Abcam or one of our authorized distributors