

## Product datasheet

# Anti-LRRC59 antibody ab105696

### 4 图像

#### 概述

---

产品名称	Anti-LRRC59抗体
描述	兔多克隆抗体to LRRC59
宿主	Rabbit
经测试应用	适用于: IHC-P, WB
种属反应性	与反应: Human 预测可用于: Mouse, Rat, Rabbit, Horse, Guinea pig, Cow, Cat, Dog, Pig
免疫原	Synthetic peptide corresponding to a region within internal sequence amino acids 201-250 (KEYDALKAAK REQEKKPKKE ANQAPKSKSG SRPRKPPPRK HTRSWAVLKL) of Human LRRC59 (NP_060979). <a href="#">Run BLAST with ExPASy</a> <a href="#">Run BLAST with NCBI</a>
阳性对照	HepG2 cell lysate

#### 性能

---

形式	Liquid
存放说明	Shipped at 4°C. Upon delivery aliquot and store at -20°C. Avoid freeze / thaw cycles.
存储溶液	Preservative: None Constituents: 2% Sucrose, PBS
纯度	Immunogen affinity purified
克隆	多克隆
同种型	IgG

#### 应用

---

Our [Abpromise guarantee](#) covers the use of **ab105696** in the following tested applications.

The application notes include recommended starting dilutions; optimal dilutions/concentrations should be determined by the end user.

应用	Ab评论	说明
IHC-P		Use at an assay dependent concentration.
WB		Use a concentration of 0.25 µg/ml. Predicted molecular weight: 35 kDa. Good results were obtained when blocked with 5% non-fat dry milk in 0.05% PBS-T.

## 靶标

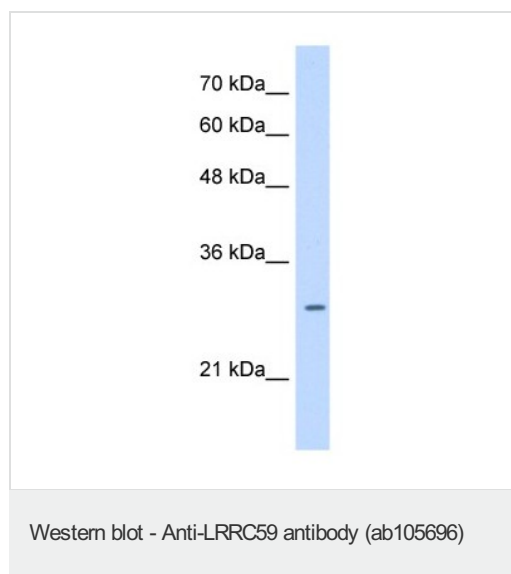
### 序列相似性

Contains 5 LRR (leucine-rich) repeats.

### 细胞定位

Microsome membrane. Endoplasmic reticulum membrane.

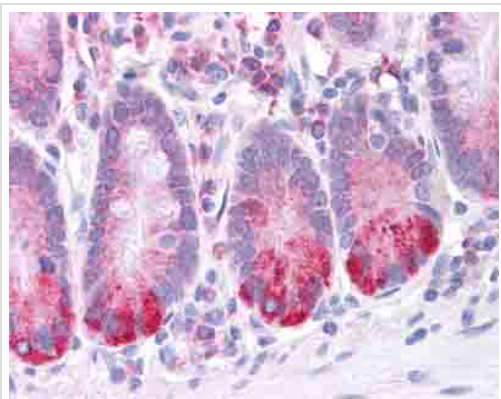
## 图片



Anti-LRRC59 antibody (ab105696) at 0.25 µg/ml + HepG2 cell lysate at 10 µg

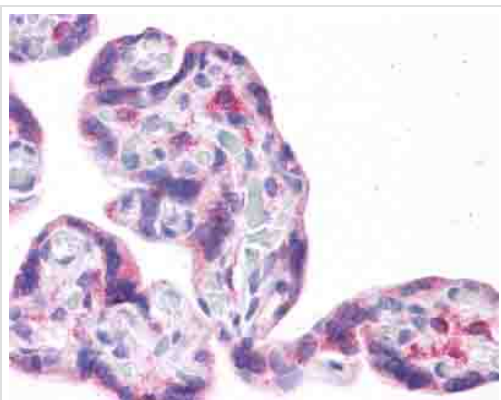
**Predicted band size: 35 kDa**

Gel concentration: 12%



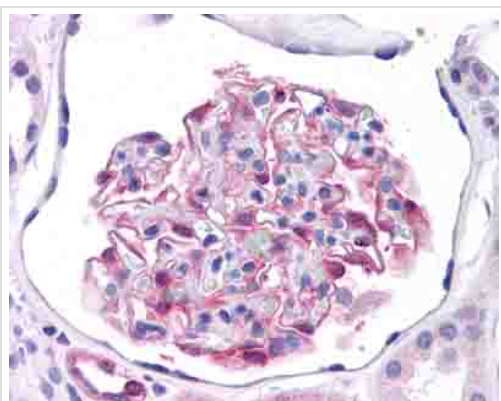
ab105696 staining LRRC59 in human kidney tissue by Immunohistochemistry (Formalin/PFA-fixed paraffin-embedded sections).

Immunohistochemistry (Formalin/PFA-fixed paraffin-embedded sections) - Anti-LRRC59 antibody (ab105696)



ab105696 staining LRRC59 in placenta tissue by Immunohistochemistry (Formalin/PFA-fixed paraffin-embedded sections).

Immunohistochemistry (Formalin/PFA-fixed paraffin-embedded sections) - Anti-LRRC59 antibody (ab105696)



ab105696 staining LRRC59 in small intestinal tissue by Immunohistochemistry (Formalin/PFA-fixed paraffin-embedded sections).

Immunohistochemistry (Formalin/PFA-fixed paraffin-embedded sections) - Anti-LRRC59 antibody (ab105696)

---

## **Our Abpromise to you: Quality guaranteed and expert technical support**

---

- Replacement or refund for products not performing as stated on the datasheet
- Valid for 12 months from date of delivery
- Response to your inquiry within 24 hours
  
- We provide support in Chinese, English, French, German, Japanese and Spanish
- Extensive multi-media technical resources to help you
- We investigate all quality concerns to ensure our products perform to the highest standards

If the product does not perform as described on this datasheet, we will offer a refund or replacement. For full details of the Abpromise, please visit <https://www.abcam.cn/abpromise> or contact our technical team.

## **Terms and conditions**

---

- Guarantee only valid for products bought direct from Abcam or one of our authorized distributors