

Product datasheet

Anti-TMEM1 antibody ab103411

2 图像

概述

产品名称	Anti-TMEM1抗体
描述	兔多克隆抗体to TMEM1
宿主	Rabbit
经测试应用	适用于: WB
种属反应性	与反应: Human
免疫原	Full length protein, corresponding to amino acids 1-1259 of Human TMEM1 (NP_003265.3).
阳性对照	HepG2 cell lysate; TMEM1 transfected 293T cell line lysate

性能

形式	Liquid
存放说明	Shipped at 4°C. Upon delivery aliquot and store at -20°C or -80°C. Avoid repeated freeze / thaw cycles.
存储溶液	Preservative: None Constituents: 1X PBS, pH 7.2
纯度	Protein A purified
克隆	多克隆
同种型	IgG

应用

Our [Abpromise guarantee](#) covers the use of **ab103411** in the following tested applications.

The application notes include recommended starting dilutions; optimal dilutions/concentrations should be determined by the end user.

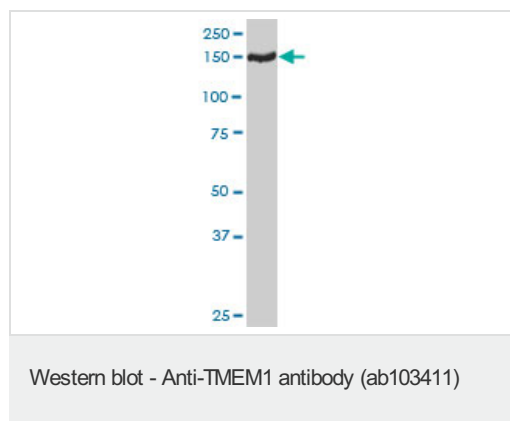
应用	Ab评论	说明
WB		1/500 - 1/1000. Predicted molecular weight: 142 kDa.

靶标

**相关性** The protein encoded by this gene is a transmembrane protein found in the cis-Golgi complex. The encoded protein is part of the multisubunit transport protein particle (TRAPP) complex and may be involved in vesicular transport from the endoplasmic reticulum to the Golgi. Mutations in this gene could be responsible for the Unverricht-Lundborg type of progressive myoclonus epilepsy, or for autoimmune polyglandular disease type 1.

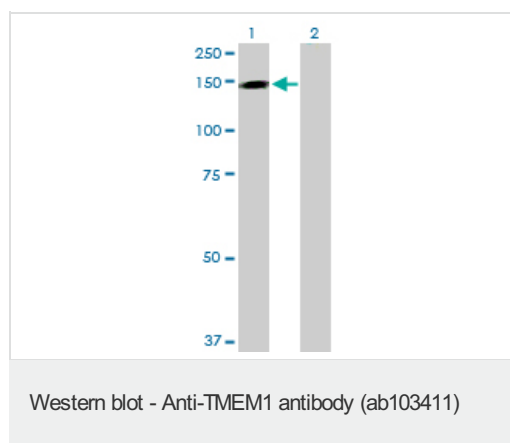
**细胞定位** Golgi apparatus; integral to membrane.

## 图片



Anti-TMEM1 antibody (ab103411) at 1/500 dilution + HepG2 cell lysate at 50  $\mu$ g

**Predicted band size:** 142 kDa



**All lanes :** Anti-TMEM1 antibody (ab103411) at 1/500 dilution

**Lane 1 :** TMEM1 transfected 293T lysate

**Lane 2 :** Non-transfected 293T lysate

Lysates/proteins at 25  $\mu$ g per lane.

**Predicted band size:** 142 kDa

**Please note:** All products are "FOR RESEARCH USE ONLY AND ARE NOT INTENDED FOR DIAGNOSTIC OR THERAPEUTIC USE"

## Our Abpromise to you: Quality guaranteed and expert technical support

- Replacement or refund for products not performing as stated on the datasheet
- Valid for 12 months from date of delivery
- Response to your inquiry within 24 hours
- We provide support in Chinese, English, French, German, Japanese and Spanish
- Extensive multi-media technical resources to help you
- We investigate all quality concerns to ensure our products perform to the highest standards

If the product does not perform as described on this datasheet, we will offer a refund or replacement. For full details of the Abpromise, please visit <https://www.abcam.cn/abpromise> or contact our technical team.

## Terms and conditions

---

- Guarantee only valid for products bought direct from Abcam or one of our authorized distributors