


Product datasheet

Anti-Zfp281 antibody ab112047

2 References 2 图像

概述

产品名称	Anti-Zfp281抗体
描述	兔多克隆抗体to Zfp281
宿主	Rabbit
经测试应用	适用于: WB, IP
种属反应性	与反应: Mouse, Human 预测可用于: Rat, Rabbit, Horse, Guinea pig, Dog, Chimpanzee, Ferret, Rhesus monkey, Gorilla 
免疫原	Synthetic peptide, corresponding to a region between amino acids 775-825 of Human Zfp281 (NP_036614.1).
阳性对照	HeLa and 293T whole cell lysate

性能

形式	Liquid
存放说明	Shipped at 4°C. Upon delivery aliquot and store at -20°C. Avoid freeze / thaw cycles.
存储溶液	pH: 7.50 Preservative: 0.09% Sodium azide Constituent: 99% Tris citrate/phosphate Note: 7 to 8
纯度	Immunogen affinity purified
克隆	多克隆
同种型	IgG

应用

Our [Abpromise guarantee](#) covers the use of **ab112047** in the following tested applications.

The application notes include recommended starting dilutions; optimal dilutions/concentrations should be determined by the end user.

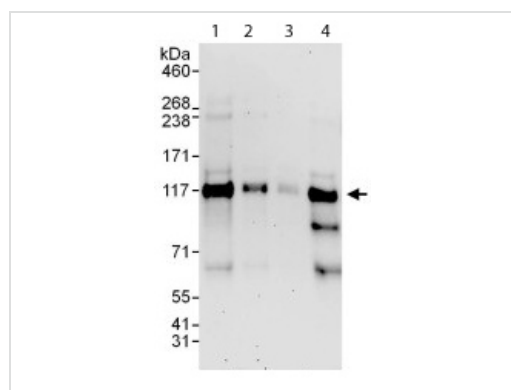
应用	Ab评论	说明
WB		1/2000 - 1/10000. Predicted molecular weight: 97 kDa.

应用	Ab评论	说明
IP		Use at 2-10 µg/mg of lysate.

## 靶标

功能	Involved in transcriptional regulation. Represses the transcription of a number of genes including gastrin and ornithine decarboxylase. Binds to the G-rich box in the enhancer region of these genes.
序列相似性	Belongs to the krueppel C2H2-type zinc-finger protein family. Contains 4 C2H2-type zinc fingers.
翻译后修饰	Phosphorylated upon DNA damage, probably by ATM or ATR.
细胞定位	Nucleus.

## 图片



Western blot - Anti-Zfp281 antibody (ab112047)

**All lanes :** Anti-Zfp281 antibody (ab112047) at 0.1 µg/ml

**Lane 1 :** HeLa whole cell lysate at 50 µg

**Lane 2 :** HeLa whole cell lysate at 15 µg

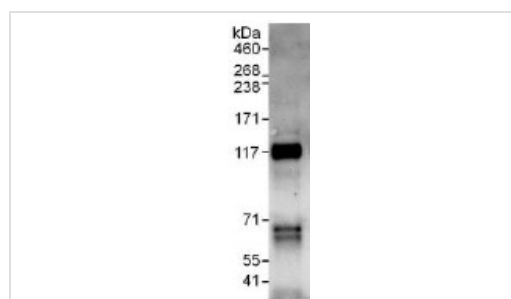
**Lane 3 :** HeLa whole cell lysate at 5 µg

**Lane 4 :** 293T whole cell lysate at 50 µg

Developed using the ECL technique.

**Predicted band size:** 97 kDa

**Exposure time:** 3 minutes



Immunoprecipitation - Anti-Zfp281 antibody (ab112047)

Detection of Zfp281 by Western Blot of Immunoprecipitate. ab112047 at 1µg/ml staining Zfp281 in HeLa whole cell lysate immunoprecipitated using ab112047 at 6µg/mg lysate (1 mg/IP; 20% of IP loaded/lane). Detection: Chemiluminescence with exposure time of 30 seconds.

**Please note:** All products are "FOR RESEARCH USE ONLY AND ARE NOT INTENDED FOR DIAGNOSTIC OR THERAPEUTIC USE"

## **Our Abpromise to you: Quality guaranteed and expert technical support**

---

- Replacement or refund for products not performing as stated on the datasheet
- Valid for 12 months from date of delivery
- Response to your inquiry within 24 hours
  
- We provide support in Chinese, English, French, German, Japanese and Spanish
- Extensive multi-media technical resources to help you
- We investigate all quality concerns to ensure our products perform to the highest standards

If the product does not perform as described on this datasheet, we will offer a refund or replacement. For full details of the Abpromise, please visit <https://www.abcam.cn/abpromise> or contact our technical team.

## **Terms and conditions**

---

- Guarantee only valid for products bought direct from Abcam or one of our authorized distributors