


Product datasheet

Anti-Wwp2 antibody ab103527

1 References 2 图像

概述

产品名称	Anti-Wwp2抗体
描述	兔多克隆抗体to Wwp2
宿主	Rabbit
经测试应用	适用于: WB, IP
种属反应性	与反应: Mouse, Human 预测可用于: Chimpanzee, Rhesus monkey, Gorilla, Orangutan 
免疫原	Synthetic peptide corresponding to a region between residue 200 and 250 of Human Wwp2 (NP_008945.2).
阳性对照	HeLa, 293T and mouse NIH3T3 whole cell lysate

性能

形式	Liquid
存放说明	Shipped at 4°C. Upon delivery aliquot and store at -20°C. Avoid freeze / thaw cycles.
存储溶液	Preservative: 0.09% Sodium azide Constituent: Tris citrate/phosphate
纯度	Immunogen affinity purified
克隆	多克隆
同种型	IgG

应用

Our [Abpromise guarantee](#) covers the use of **ab103527** in the following tested applications.

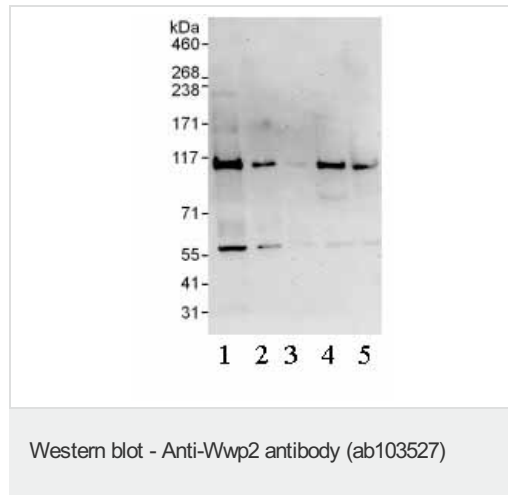
The application notes include recommended starting dilutions; optimal dilutions/concentrations should be determined by the end user.

应用	Ab评论	说明
WB		1/2000 - 1/10000. Predicted molecular weight: 99 kDa.
IP		Use at 2-5 µg/mg of lysate.

靶标

相关性	Wwp2 is a HECT domain containing E3 ubiquitin protein ligase. Wwp2 specifically interacts with Rpb1 and is responsible for targeting it for ubiquitination.
细胞定位	Nuclear

图片



All lanes : Anti-Wwp2 antibody (ab103527) at 0.1 µg/ml

Lane 1 : HeLa whole cell lysate at 50 µg

Lane 2 : HeLa whole cell lysate at 15 µg

Lane 3 : HeLa whole cell lysate at 5 µg

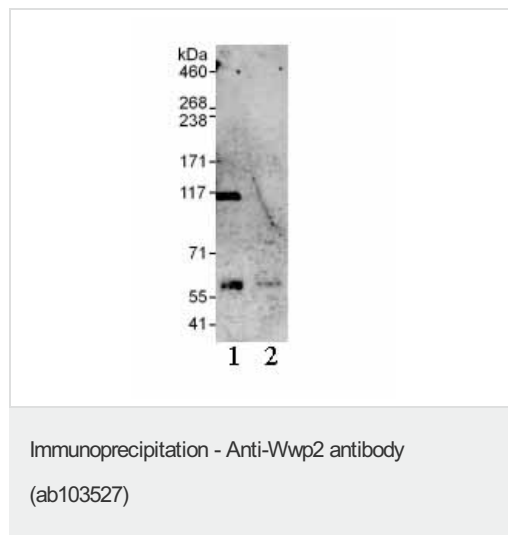
Lane 4 : 293T at 50 µg

Lane 5 : NIH3T3 at 50 µg

Developed using the ECL technique.

Predicted band size: 99 kDa

Exposure time: 3 minutes



Detection of Wwp2 by Western Blot of Immunoprecipitate.

Lane 1: ab103527 at 1 µg/ml staining Wwp2 in HeLa whole cell lysate immunoprecipitated using ab103527 at 3 µg/mg lysate (1 mg/IP; 20% of IP loaded/lane).

Lane 2: Control IgG

Detection: Chemiluminescence with exposure time of 30 seconds.

Please note: All products are "FOR RESEARCH USE ONLY AND ARE NOT INTENDED FOR DIAGNOSTIC OR THERAPEUTIC USE"

Our Abpromise to you: Quality guaranteed and expert technical support

- Replacement or refund for products not performing as stated on the datasheet
- Valid for 12 months from date of delivery
- Response to your inquiry within 24 hours

- We provide support in Chinese, English, French, German, Japanese and Spanish
- Extensive multi-media technical resources to help you
- We investigate all quality concerns to ensure our products perform to the highest standards

If the product does not perform as described on this datasheet, we will offer a refund or replacement. For full details of the Abpromise, please visit <https://www.abcam.cn/abpromise> or contact our technical team.

Terms and conditions

- Guarantee only valid for products bought direct from Abcam or one of our authorized distributors