

Product datasheet

Anti-WDR47 antibody ab121935

2 图像

概述

产品名称	Anti-WDR47抗体
描述	兔多克隆抗体to WDR47
宿主	Rabbit
经测试应用	适用于: IHC-P, WB
种属反应性	与反应: Human
免疫原	antigen sequence: LLYECCVEFC QSKATGEEIT ESEVLLGIDL LCGNGCDDL LSLLSWLQNL PSSVFSCAFE QKMLNIHVDK LLKPTKAAYA DLLTPLISKL SPYP, corresponding to internal sequence amino acids 202-295 of Human WDR47. Run BLAST with ExPASy Run BLAST with NCBI
阳性对照	Human kidney tissue; RT4, U 251 MG and Human tonsil lysates.

性能

形式	Liquid
存放说明	Shipped at 4°C. Upon delivery aliquot and store at -20°C. Avoid freeze / thaw cycles.
存储溶液	pH: 7.20 Preservative: 0.02% Sodium azide Constituents: 59% PBS, 40% Glycerol
纯度	Immunogen affinity purified
克隆	多克隆
同种型	IgG

应用

Our [Abpromise guarantee](#) covers the use of **ab121935** in the following tested applications.

The application notes include recommended starting dilutions; optimal dilutions/concentrations should be determined by the end user.

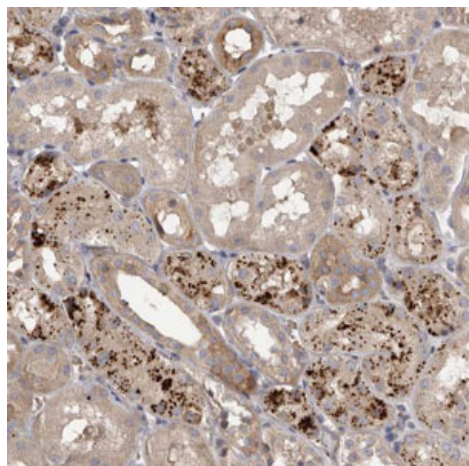
应用	Ab评论	说明
IHC-P		1/20 - 1/50. Perform heat mediated antigen retrieval with citrate buffer pH 6 before commencing with IHC staining protocol.
WB		1/250 - 1/500.

靶标

序列相似性

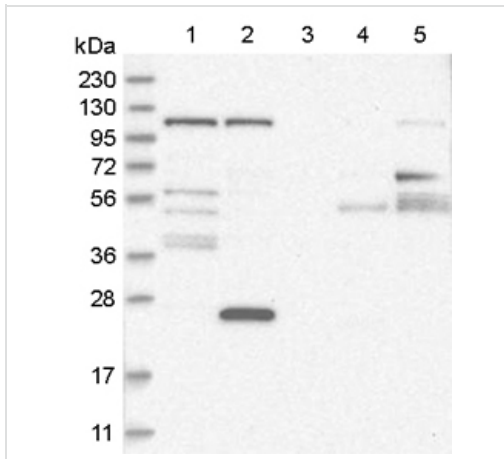
Contains 1 CTLH domain.
Contains 1 LisH domain.
Contains 7 WD repeats.

图片



ab121935, at 1/40 dilution, staining WDR47 in paraffin-embedded Human kidney tissue by Immunohistochemistry.

Immunohistochemistry (Formalin/PFA-fixed paraffin-embedded sections) - Anti-WDR47 antibody (ab121935)



Western blot - Anti-WDR47 antibody (ab121935)

All lanes : Anti-WDR47 antibody (ab121935)
at 1/250 dilution

Lane 1 : RT 4 cell lysate

Lane 2 : U 251 MG cell lysate

Lane 3 : Human plasma lysate

Lane 4 : Human liver lysate

Lane 5 : Human tonsil lysate

Developed using the ECL technique.

Please note: All products are "FOR RESEARCH USE ONLY AND ARE NOT INTENDED FOR DIAGNOSTIC OR THERAPEUTIC USE"

Our Abpromise to you: Quality guaranteed and expert technical support

- Replacement or refund for products not performing as stated on the datasheet
- Valid for 12 months from date of delivery
- Response to your inquiry within 24 hours
- We provide support in Chinese, English, French, German, Japanese and Spanish
- Extensive multi-media technical resources to help you
- We investigate all quality concerns to ensure our products perform to the highest standards

If the product does not perform as described on this datasheet, we will offer a refund or replacement. For full details of the Abpromise, please visit <https://www.abcam.cn/abpromise> or contact our technical team.

Terms and conditions

- Guarantee only valid for products bought direct from Abcam or one of our authorized distributors