

Product datasheet

Anti-UBE2I / UBC9 antibody ab21193

★★★★★ 2 Abreviews 9 References 3 图像

概述

产品名称	Anti-UBE2I / UBC9抗体
描述	山羊多克隆抗体to UBE2I / UBC9
宿主	Goat
经测试应用	适用于: ICC/IF, IHC-P, WB, ELISA
种属反应性	与反应: Mouse, Rat, Human 预测可用于: Chicken, Hamster, Dog, Xenopus laevis
免疫原	Synthetic peptide: SGIALSRLAQERK , corresponding to N terminal amino acids 2-14 of Human Ube2I. Run BLAST with Run BLAST with
阳性对照	Human Kidney, Human Lung and Human Testis lysates
常规说明	Product is very sensitive to freeze/thawing therefore this should be avoided. Store at 4C for short term use and -20C for long term storage in small aliquots.

性能

形式	Liquid
存放说明	Shipped at 4°C. Upon delivery aliquot and store at -20°C or -80°C. Avoid repeated freeze / thaw cycles.
存储溶液	Preservative: 0.02% Sodium Azide Constituents: 0.5% BSA, Tris buffered saline. pH 7.3
纯度	Immunogen affinity purified
克隆	多克隆
同种型	IgG

应用

Our [Abpromise guarantee](#) covers the use of **ab21193** in the following tested applications.

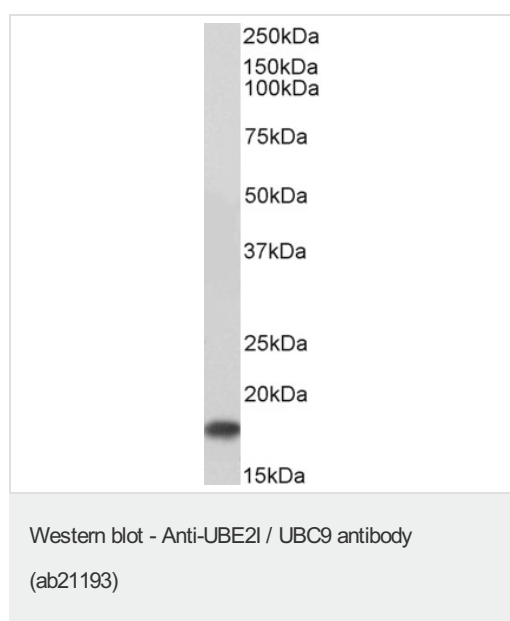
The application notes include recommended starting dilutions; optimal dilutions/concentrations should be determined by the end user.

应用	Ab评论	说明
ICC/IF	★★★★★	Use at an assay dependent dilution. See Abreview.
IHC-P		Use at an assay dependent concentration.
WB	★★★★★	Use a concentration of 0.1 - 0.3 µg/ml. Detects a band of approximately 17 kDa (predicted molecular weight: 18 kDa). Transfer onto PVDF membrane and block in 3 % milk. Incubate primary antibody with membrane at room temperature.
ELISA		1/64000.

靶标

功能	Accepts the ubiquitin-like proteins SUMO1, SUMO2, SUMO3 and SUMO4 from the UBLE1A-UBLE1B E1 complex and catalyzes their covalent attachment to other proteins with the help of an E3 ligase such as RANBP2 or CBX4. Necessary for sumoylation of FOXL2 and KAT5. Essential for nuclear architecture and chromosome segregation.
组织特异性	Expressed in heart, skeletal muscle, pancreas, kidney, liver, lung, placenta and brain. Also expressed in testis and thymus.
通路	Protein modification; protein sumoylation.
序列相似性	Belongs to the ubiquitin-conjugating enzyme family.
细胞定位	Nucleus. Cytoplasm. Mainly nuclear. In spermatocytes, localizes in synaptonemal complexes. Recruited by BCL11A into the nuclear body.

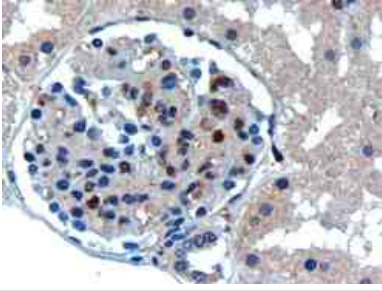
图片



Anti-UBE21 / UBC9 antibody (ab21193) at 0.1 µg/ml + Human kidney lysate at 35 µg

Predicted band size: 18 kDa

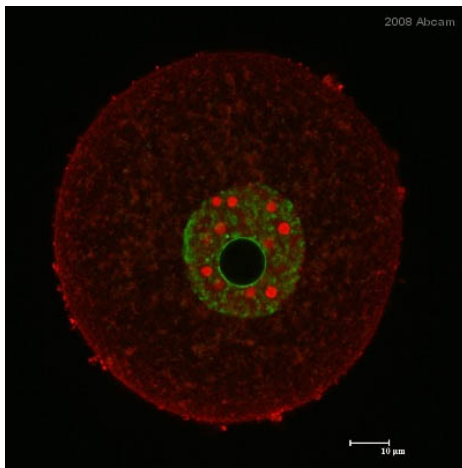
Primary incubation was 1 hour. Detected by chemiluminescence.



Immunohistochemistry (Formalin/PFA-fixed paraffin-embedded sections) - Anti-UBE21 / UBC9 antibody (ab21193)

Ab21193 (0.3ug/ml) staining human UBE21 in human kidney by immunohistochemistry using paraffin embedded tissue.

Microwaved antigen retrieval with Tris/EDTA buffer pH9, HRP-staining.



Immunocytochemistry/ Immunofluorescence - Anti-UBE21 / UBC9 antibody (ab21193)

This image is courtesy of an abreview submitted by Motomasa Ihara

ab21193 staining UBE21 / UBC9 in mouse oocyte by Immunocytochemistry. The cells were fixed in paraformaldehyde, permeabilized in 0.1% Tween and blocked in 0.1% BSA for 30 minutes at 25°C. The primary antibody was diluted 1/50 and incubated with sample for 1 hour at 25°C. A Cy5® conjugated Donkey polyclonal to goat, diluted 1/400 was used as the secondary.

Please note: All products are "FOR RESEARCH USE ONLY AND ARE NOT INTENDED FOR DIAGNOSTIC OR THERAPEUTIC USE"

Our Abpromise to you: Quality guaranteed and expert technical support

- Replacement or refund for products not performing as stated on the datasheet
- Valid for 12 months from date of delivery
- Response to your inquiry within 24 hours
- We provide support in Chinese, English, French, German, Japanese and Spanish
- Extensive multi-media technical resources to help you
- We investigate all quality concerns to ensure our products perform to the highest standards

If the product does not perform as described on this datasheet, we will offer a refund or replacement. For full details of the Abpromise, please visit <https://www.abcam.cn/abpromise> or contact our technical team.

Terms and conditions

- Guarantee only valid for products bought direct from Abcam or one of our authorized distributors