

Product datasheet

Anti-Thyroglobulin antibody [EPR3615] ab119988

**重组** RabMAb

1 图像

概述

产品名称	Anti-Thyroglobulin抗体[EPR3615]
描述	兔单克隆抗体[EPR3615] to Thyroglobulin
宿主	Rabbit
经测试应用	适用于: WB, IP 不适用于: Flow Cyt, ICC or IHC-P
种属反应性	与反应: Human
免疫原	Synthetic peptide within Human Thyroglobulin (C terminal). The exact sequence is proprietary.
阳性对照	Human thyroid lysate.
常规说明	

Our RabMAb<sup>®</sup> technology is a patented hybridoma-based technology for making rabbit monoclonal antibodies. For details on our patents, please refer to [RabMAb<sup>®</sup> patents](#)

This product is a recombinant rabbit monoclonal antibody.

性能

形式	Liquid
存放说明	Shipped at 4°C. Store at -20°C. Stable for 12 months at -20°C.
存储溶液	PBS 49%, Sodium azide 0.01%, Glycerol 50%, BSA 0.05%
纯度	Tissue culture supernatant
克隆	单克隆
克隆编号	EPR3615
同种型	IgG

应用

Our [Abpromise guarantee](#) covers the use of **ab119988** in the following tested applications.

The application notes include recommended starting dilutions; optimal dilutions/concentrations should be determined by the end user.

应用	Ab评论	说明
WB		1/500000 - 1/1e+006. Detects a band of approximately 300, 294 kDa (predicted molecular weight: 305 kDa).
IP		1/50.

**应用说明** Is unsuitable for Flow Cyt, ICC or IHC-P.

## 靶标

**功能** Precursor of the iodinated thyroid hormones thyroxine (T4) and triiodothyronine (T3).

**组织特异性** Thyroid gland specific.

**疾病相关** Defects in TG are the cause of congenital hypothyroidism due to dysmorphogenesis type 3 (CHDH3) [MIM:274700]. A disorder due to thyroid dysmorphogenesis, causing large goiters of elastic and soft consistency in the majority of patients. Although the degree of thyroid dysfunction varies considerably among patients with defective thyroglobulin synthesis, patients usually have a relatively high serum free triiodothyronine (T3) concentration with disproportionately low free tetraiodothyronine (T4) level. The maintenance of relatively high free T3 levels prevents profound tissue hypothyroidism except in brain and pituitary, which are dependent on T4 supply, resulting in neurologic and intellectual defects in some cases.

Variations in TG are associated with susceptibility to autoimmune thyroid disease type 3 (AITD3) [MIM:608175]. AITDs including Graves disease (GD) and Hashimoto thyroiditis (HT), are among the most common human autoimmune diseases. They are complex diseases, which are caused by an interaction between susceptibility genes and nongenetic factors, such as infection.

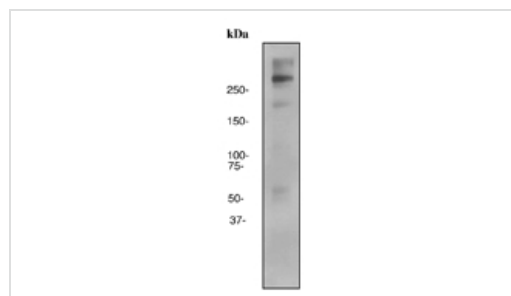
**序列相似性** Belongs to the type-B carboxylesterase/lipase family.

Contains 11 thyroglobulin type-1 domains.

**翻译后修饰** Sulfated tyrosines are desulfated during iodination.

**细胞定位** Secreted.

## 图片



Western blot - Anti-Thyroglobulin antibody [EPR3615] (ab119988)

Anti-Thyroglobulin antibody [EPR3615] (ab119988) at 1/500000 dilution + Human thyroid lysate at 10 µg

### Secondary

Goat anti-Rabbit HRP at 1/2000 dilution

**Predicted band size:** 305 kDa

**Please note:** All products are "FOR RESEARCH USE ONLY AND ARE NOT INTENDED FOR DIAGNOSTIC OR THERAPEUTIC USE"

## **Our Abpromise to you: Quality guaranteed and expert technical support**

---

- Replacement or refund for products not performing as stated on the datasheet
- Valid for 12 months from date of delivery
- Response to your inquiry within 24 hours
  
- We provide support in Chinese, English, French, German, Japanese and Spanish
- Extensive multi-media technical resources to help you
- We investigate all quality concerns to ensure our products perform to the highest standards

If the product does not perform as described on this datasheet, we will offer a refund or replacement. For full details of the Abpromise, please visit <https://www.abcam.cn/abpromise> or contact our technical team.

## **Terms and conditions**

---

- Guarantee only valid for products bought direct from Abcam or one of our authorized distributors