

Product datasheet

Anti-TRA2A antibody ab72625

★★★★★ 1 Abreviews 4 图像

概述

产品名称	Anti-TRA2A抗体
描述	兔多克隆抗体to TRA2A
宿主	Rabbit
特异性	This antibody detects endogenous levels of total TRA2A protein.
经测试应用	适用于: WB, ELISA, IHC-P, ICC/IF
种属反应性	与反应: Mouse, Human
免疫原	A synthesized peptide derived from an internal region of human TRA2A.
阳性对照	Hela cells, human brain tissue sections and extracts from HUVEC cells.

性能

形式	Liquid
存放说明	Shipped at 4°C. Upon delivery aliquot and store at -20°C. Avoid freeze / thaw cycles.
存储溶液	Preservative: 0.02% Sodium Azide Constituents: 50% Glycerol, PBS, 150mM Sodium chloride, pH 7.4
纯度	Immunogen affinity purified
纯化说明	The antibody was affinity-purified from rabbit antiserum by affinity-chromatography using epitope-specific immunogen.
克隆	多克隆
同种型	IgG

应用

Our [Abpromise guarantee](#) covers the use of **ab72625** in the following tested applications.

The application notes include recommended starting dilutions; optimal dilutions/concentrations should be determined by the end user.

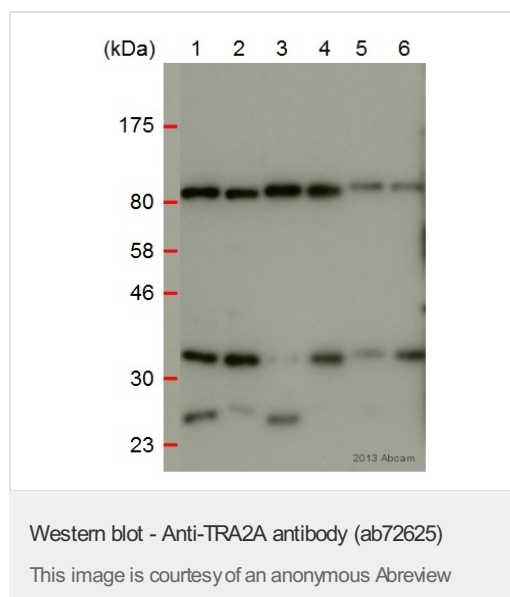
应用	Ab评论	说明
WB	★★★★★	1/500 - 1/1000. Detects a band of approximately 27, 33, 44 kDa (predicted molecular weight: 33 kDa).

应用	Ab评论	说明
ELISA		1/20000.
IHC-P		Use at an assay dependent concentration.
ICC/IF		1/500 - 1/1000.

靶标

功能	Sequence-specific RNA-binding protein which participates in the control of pre-mRNA splicing.
序列相似性	Belongs to the splicing factor SR family. Contains 1 RRM (RNA recognition motif) domain.
翻译后修饰	Phosphorylated in the RS domains.
细胞定位	Nucleus.

图片



All lanes : Anti-TRA2A antibody (ab72625) at 1/250 dilution

Lanes 1 & 3 & 5 : 293T whole cell lysate

Lanes 2 & 4 & 6 : Mouse ES (129Sv) whole cell lysate

Lysates/proteins at 5 µg per lane.

Secondary

All lanes : HRP-conjugated Donkey anti-rabbit IgG polyclonal at 1/5000 dilution

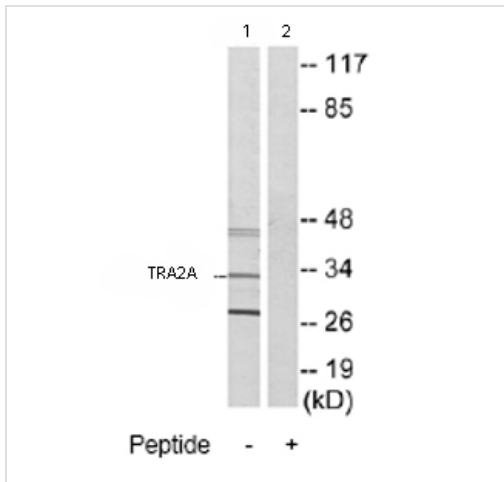
Performed under reducing conditions.

Predicted band size: 33 kDa

Observed band size: 33 kDa

Additional bands at: 27 kDa (possible non-specific binding), 85 kDa (possible non-specific binding)

Exposure time: 1 minute



Western blot - Anti-TRA2A antibody (ab72625)

All lanes : Anti-TRA2A antibody (ab72625) at 1/500 dilution

Lane 1 : Extracts from HUVEC cells

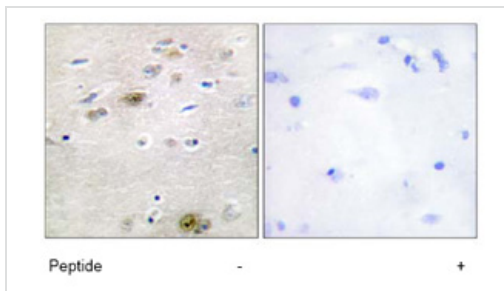
Lane 2 : Extracts from HUVEC cells plus 5µg immunizing peptide

Lysates/proteins at 5 µg per lane.

Predicted band size: 33 kDa

Observed band size: 33 kDa

Additional bands at: 27 kDa, 44 kDa. We are unsure as to the identity of these extra bands.

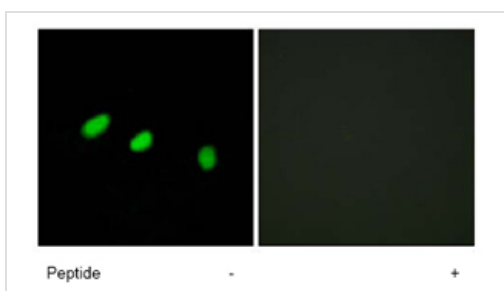


Immunohistochemistry (Formalin/PFA-fixed paraffin-embedded sections) - Anti-TRA2A antibody (ab72625)

Immunohistochemistry analysis of paraffin-embedded human brain tissue using ab72625 at 1:50 dilution.

Left image un-treated.

Right image treated with immunizing peptide.



Immunocytochemistry/ Immunofluorescence - Anti-TRA2A antibody (ab72625)

Immunofluorescence analysis of HeLa cells using ab72625 at a 1:500 dilution.

Left image un-treated.

Right image treated with immunizing peptide.

Please note: All products are "FOR RESEARCH USE ONLY AND ARE NOT INTENDED FOR DIAGNOSTIC OR THERAPEUTIC USE"

Our Abpromise to you: Quality guaranteed and expert technical support

- Replacement or refund for products not performing as stated on the datasheet

- Valid for 12 months from date of delivery
- Response to your inquiry within 24 hours

- We provide support in Chinese, English, French, German, Japanese and Spanish
- Extensive multi-media technical resources to help you
- We investigate all quality concerns to ensure our products perform to the highest standards

If the product does not perform as described on this datasheet, we will offer a refund or replacement. For full details of the Abpromise, please visit <https://www.abcam.cn/abpromise> or contact our technical team.

Terms and conditions

- Guarantee only valid for products bought direct from Abcam or one of our authorized distributors