

Product datasheet

Anti-TMPRSS2 antibody [EPR3861] ab92323

RabMAb

★★★★★ 2 Abreviews 4 References 3 图像

概述

产品名称	Anti-TMPRSS2抗体[EPR3861]
描述	兔单克隆抗体[EPR3861] to TMPRSS2
宿主	Rabbit
经测试应用	适用于: WB, IHC-P, ICC, Flow Cyt 不适用于: IP
种属反应性	与反应: Mouse, Rat, Human, Cynomolgus monkey, Rhesus monkey, Common marmoset
免疫原	Synthetic peptide within Human TMPRSS2 aa 1-100. The exact sequence is proprietary.
阳性对照	Human prostate, Human small intestine and LNCaP cell lysates, Human prostatic adenocarcinoma
常规说明	<p>Our RabMAb[®] technology is a patented hybridoma-based technology for making rabbit monoclonal antibodies. For details on our patents, please refer to RabMAb[®] patents</p> <p>We are constantly working hard to ensure we provide our customers with best in class antibodies. As a result of this work we are pleased to now offer this antibody in purified format. We are in the process of updating our datasheets. The purified format is designated 'PUR' on our product labels. If you have any questions regarding this update, please contact our Scientific Support team.</p> <p>This product is a recombinant rabbit monoclonal antibody.</p>

性能

形式	Liquid
存放说明	Shipped at 4°C. Store at -20°C. Stable for 12 months at -20°C.
存储溶液	PBS 49%, Sodium azide 0.01%, Glycerol 50%, BSA 0.05%
纯度	Protein A purified
克隆	单克隆
克隆编号	EPR3861
同种型	IgG

应用

Our [Abpromise guarantee](#) covers the use of **ab92323** in the following tested applications.

The application notes include recommended starting dilutions; optimal dilutions/concentrations should be determined by the end user.

应用	Ab评论	说明
WB	★★★★★	1/1000 - 1/10000. Predicted molecular weight: 54 kDa.
IHC-P		1/1000. The use of an HRP/AP polymerized secondary antibody is recommended as stronger signals have been found using these.
ICC		1/250 - 1/1000.
Flow Cyt		1/100. ab172730 - Rabbit monoclonal IgG, is suitable for use as an isotype control with this antibody.

应用说明 Is unsuitable for IP.

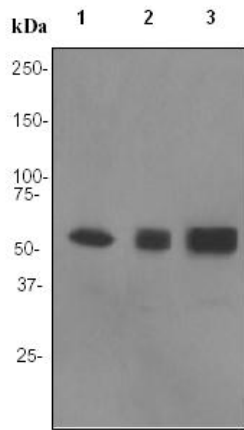
靶标

组织特异性 Expressed strongly in small intestine. Also expressed in prostate, colon, stomach and salivary gland.

序列相似性 Belongs to the peptidase S1 family.
Contains 1 LDL-receptor class A domain.
Contains 1 peptidase S1 domain.
Contains 1 SRCR domain.

细胞定位 Cell membrane and Secreted. Activated by cleavage and secreted.

图片



Western blot - Anti-TMPRSS2 antibody [EPR3861] (ab92323)

All lanes : Anti-TMPRSS2 antibody [EPR3861] (ab92323) at 1/1000 dilution

Lane 1 : Human prostate lysate

Lane 2 : Human small intestine lysate

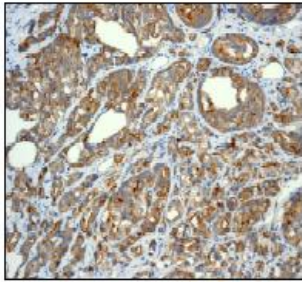
Lane 3 : LNCaP cell lysate

Lysates/proteins at 10 µg per lane.

Secondary

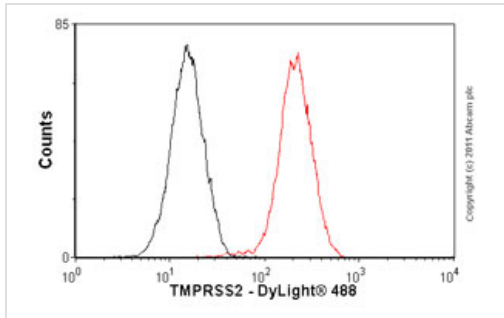
All lanes : HRP labelled goat anti-rabbit at 1/1000 dilution

Predicted band size: 54 kDa



Immunohistochemistry (Formalin/PFA-fixed paraffin-embedded sections) - Anti-TMPRSS2 antibody [EPR3861] (ab92323)

ab92323 at 1/1000 dilution, staining TMPRSS2 in paraffin embedded Human prostatic adenocarcinoma



Flow Cytometry - Anti-TMPRSS2 antibody
[EPR3861] (ab92323)

Overlay histogram showing LoVo cells stained with ab92323 (red line). The cells were fixed with 80% methanol (5 min) and incubated in 1x PBS / 10% normal goat serum / 0.3M glycine to block non-specific protein-protein interactions. The cells were then incubated with the antibody (ab92323, 1µg/1x10⁶ cells) for 30 min at 22°C. The secondary antibody used was DyLight® 488 goat anti-rabbit IgG (H+L) (ab96899) at 1/500 dilution for 30 min at 22°C. Isotype control antibody (black line) was rabbit IgG (monoclonal) (1µg/1x10⁶ cells) used under the same conditions. Acquisition of >5,000 events was performed.

Please note that Abcam do not have any data for use of this antibody on non-fixed cells. We welcome any customer feedback.

Please note: All products are "FOR RESEARCH USE ONLY AND ARE NOT INTENDED FOR DIAGNOSTIC OR THERAPEUTIC USE"

Our Abpromise to you: Quality guaranteed and expert technical support

- Replacement or refund for products not performing as stated on the datasheet
- Valid for 12 months from date of delivery
- Response to your inquiry within 24 hours
- We provide support in Chinese, English, French, German, Japanese and Spanish
- Extensive multi-media technical resources to help you
- We investigate all quality concerns to ensure our products perform to the highest standards

If the product does not perform as described on this datasheet, we will offer a refund or replacement. For full details of the Abpromise, please visit <https://www.abcam.cn/abpromise> or contact our technical team.

Terms and conditions

- Guarantee only valid for products bought direct from Abcam or one of our authorized distributors