

## Product datasheet

# Anti-TFPI antibody ab66544

1 References 1 图像

### 概述

产品名称	Anti-TFP抗体
描述	兔多克隆抗体to TFPI
宿主	Rabbit
经测试应用	适用于: WB, IHC-Fr
种属反应性	与反应: Human 预测可用于: Rat, Cow, Chimpanzee, Rhesus monkey, Orangutan
免疫原	Synthetic peptide conjugated to KLH derived from within residues 1 - 100 of Human TFPI.参阅 Abcam的专有抗源政策(Peptide available as <a href="#">ab66543</a> .)
阳性对照	This antibody gave a positive signal in the following Human Whole Cell Lysates: HeLa, Jurkat, A431, HEK293, HepG2, MCF7, SHSY-5Y and U2OS.

### 性能

形式	Liquid
存放说明	Shipped at 4°C. Store at +4°C short term (1-2 weeks). Upon delivery aliquot. Store at -20°C or -80°C. Avoid freeze / thaw cycle.
存储溶液	Preservative: 0.02% Sodium Azide Constituents: 1% BSA, PBS, pH 7.4
纯度	Immunogen affinity purified
克隆	多克隆
同种型	IgG

### 应用

Our [Abpromise guarantee](#) covers the use of **ab66544** in the following tested applications.

The application notes include recommended starting dilutions; optimal dilutions/concentrations should be determined by the end user.

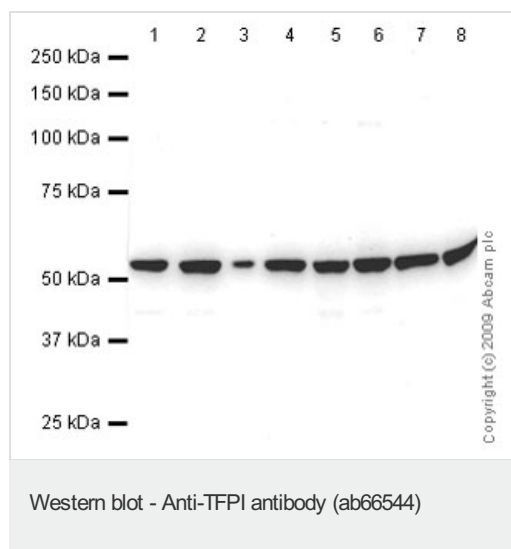
应用	Ab评论	说明
WB		Use a concentration of 1 µg/ml. Detects a band of approximately 52 kDa (predicted molecular weight: 35 kDa).

应用	Ab评论	说明
IHC-Fr		Use at an assay dependent concentration. PubMed: 24716194

## 靶标

<b>功能</b>	Inhibits factor X (X(a)) directly and, in a Xa-dependent way, inhibits VIIa/tissue factor activity, presumably by forming a quaternary Xa/LACI/VIIa/TF complex. It possesses an antithrombotic action and also the ability to associate with lipoproteins in plasma.
<b>组织特异性</b>	Mostly in endothelial cells.
<b>序列相似性</b>	Contains 3 BPTI/Kunitz inhibitor domains.
<b>结构域</b>	This inhibitor contains three inhibitory domains. The first domain interacts with VIIa and TF, the second one with Xa.
<b>翻译后修饰</b>	O-glycosylated.
<b>细胞定位</b>	Secreted.

## 图片



**All lanes :** Anti-TFPI antibody (ab66544) at 1 µg/ml

**Lane 1 :** HeLa (Human epithelial carcinoma cell line) Whole Cell Lysate

**Lane 2 :** Jurkat (Human T cell lymphoblast-like cell line) Whole Cell Lysate

**Lane 3 :** A431 (Human epithelial carcinoma cell line) Whole Cell Lysate

**Lane 4 :** HEK293 (Human embryonic kidney cell line) Whole Cell Lysate

**Lane 5 :** HepG2 (Human hepatocellular liver carcinoma cell line) Whole Cell Lysate

**Lane 6 :** MCF7 (Human breast adenocarcinoma cell line) Whole Cell Lysate

**Lane 7 :** SHSY-5Y (Human neuroblastoma cell line) Whole Cell Lysate

**Lane 8 :** U2OS (Human osteosarcoma cell line) Whole Cell Lysate

Lysates/proteins at 10 µg per lane.

### Secondary

**All lanes :** Goat polyclonal to Rabbit IgG - H&L - Pre-Adsorbed (HRP) at 1/3000 dilution

Performed under reducing conditions.

**Predicted band size:** 35 kDa

**Observed band size:** 52 kDa

[why is the actual band size different from the predicted?](#)

This protein contains a number of potential glycosylation sites (SwissProt). The 52 kDa band observed is comparable to molecular weights seen with other commercially available antibodies to TFPI.

**Please note:** All products are "FOR RESEARCH USE ONLY AND ARE NOT INTENDED FOR DIAGNOSTIC OR THERAPEUTIC USE"

### **Our Abpromise to you: Quality guaranteed and expert technical support**

---

- Replacement or refund for products not performing as stated on the datasheet
- Valid for 12 months from date of delivery
- Response to your inquiry within 24 hours
  
- We provide support in Chinese, English, French, German, Japanese and Spanish
- Extensive multi-media technical resources to help you
- We investigate all quality concerns to ensure our products perform to the highest standards

If the product does not perform as described on this datasheet, we will offer a refund or replacement. For full details of the Abpromise, please visit <https://www.abcam.cn/abpromise> or contact our technical team.

### **Terms and conditions**

---

- Guarantee only valid for products bought direct from Abcam or one of our authorized distributors