


Product datasheet

Anti-TCP1 theta antibody ab96321

3 图像

概述

产品名称	Anti-TCP1 theta抗体
描述	兔多克隆抗体to TCP1 theta
宿主	Rabbit
经测试应用	适用于: ICC/IF, WB, IHC-P
种属反应性	与反应: Human 预测可用于: Mouse, Rat, Cow, Zebrafish 
免疫原	Recombinant fragment, corresponding to a region within internal sequence amino acids 111 - 337 of Human TCP1 theta.
阳性对照	293T, A431, H1299, HeLa, HepG2, Molt-4 or Raji cell lysate. IF/ICC: HeLa cell line.

性能

形式	Liquid
存放说明	Shipped at 4°C. Upon delivery aliquot and store at -20°C. Avoid repeated freeze / thaw cycles.
存储溶液	pH: 7.00 Preservative: 0.01% Thimerosal (merthiolate) Constituents: 2.68% PBS, 1% BSA, 20% Glycerol
纯度	Immunogen affinity purified
克隆	多克隆
同种型	IgG

应用

Our [Abpromise guarantee](#) covers the use of **ab96321** in the following tested applications.

The application notes include recommended starting dilutions; optimal dilutions/concentrations should be determined by the end user.

应用	Ab评论	说明
ICC/IF		Use a concentration of 5 µg/ml.
WB		1/500 - 1/3000. Predicted molecular weight: 60 kDa.

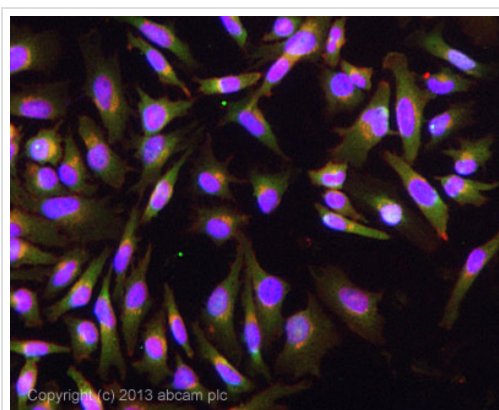
应用	Ab评论	说明
IHC-P		1/100 - 1/500.

靶标

相关性 TCP1 theta is the theta polypeptide of the CCT chaperonin molecule complex. The intact CCT complex is composed of eight polypeptides in a double ring. TCP1 theta is a molecular chaperone that assists the folding of proteins upon ATP hydrolysis. CCT is important within cells in aiding the folding of proteins including actin, tubulin and the VHL tumour suppressor protein.

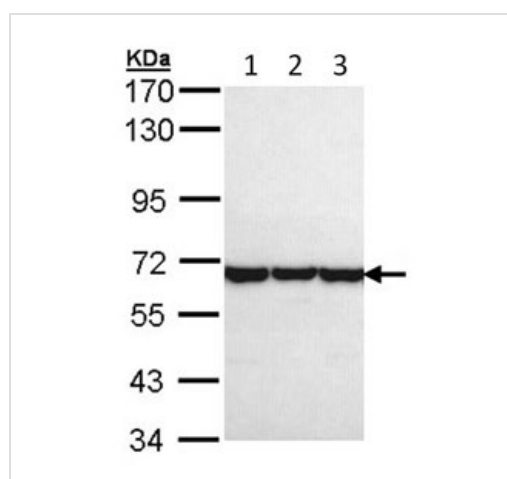
细胞定位 Cytoplasm. Cytoplasm; cytoskeleton; centrosome

图片



Immunocytochemistry/ Immunofluorescence - Anti-TCP1 theta antibody (ab96321)

ICC/IF image of ab96321 stained HeLa cells. The cells were 4% formaldehyde fixed (10 min) and then incubated in 1%BSA / 10% normal goat serum / 0.3M glycine in 0.1% PBS-Tween for 1h to permeabilise the cells and block non-specific protein-protein interactions. The cells were then incubated with the antibody (ab96321, 5µg/ml) overnight at +4°C. The secondary antibody (green) was ab96899, DyLight® 488 goat anti-rabbit IgG (H+L) used at a 1/250 dilution for 1h. Alexa Fluor® 594 WGA was used to label plasma membranes (red) at a 1/200 dilution for 1h. DAPI was used to stain the cell nuclei (blue) at a concentration of 1.43µM.



Western blot - Anti-TCP1 theta antibody (ab96321)

All lanes : Anti-TCP1 theta antibody (ab96321) at 1/1000 dilution

Lane 1 : A431 whole cell lysate

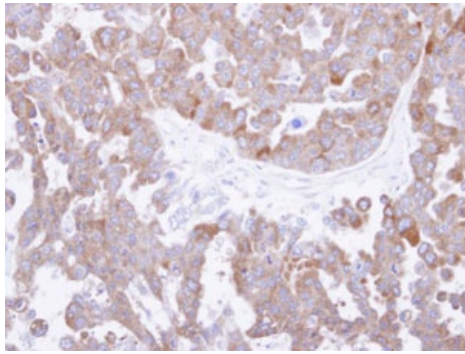
Lane 2 : H1299 whole cell lysate

Lane 3 : HeLa whole cell lysate

Lysates/proteins at 30 µg per lane.

Predicted band size: 60 kDa

7.5% SDS PAGE



Immunohistochemistry analysis of paraffin-embedded OVCAR3 xenograft, using ab96321 at 1/500 dilution.

Immunohistochemistry (Formalin/PFA-fixed paraffin-embedded sections) - Anti-TCP1 theta antibody (ab96321)

Please note: All products are "FOR RESEARCH USE ONLY AND ARE NOT INTENDED FOR DIAGNOSTIC OR THERAPEUTIC USE"

Our Abpromise to you: Quality guaranteed and expert technical support

- Replacement or refund for products not performing as stated on the datasheet
- Valid for 12 months from date of delivery
- Response to your inquiry within 24 hours
- We provide support in Chinese, English, French, German, Japanese and Spanish
- Extensive multi-media technical resources to help you
- We investigate all quality concerns to ensure our products perform to the highest standards

If the product does not perform as described on this datasheet, we will offer a refund or replacement. For full details of the Abpromise, please visit <https://www.abcam.cn/abpromise> or contact our technical team.

Terms and conditions

- Guarantee only valid for products bought direct from Abcam or one of our authorized distributors