


## Product datasheet

# Anti-SYT11 antibody ab110766

### 1 图像

#### 概述

产品名称	Anti-SYT11抗体
描述	兔多克隆抗体to SYT11
宿主	Rabbit
经测试应用	适用于: WB
种属反应性	与反应: Human 预测可用于: Mouse, Rat 
免疫原	Synthetic peptide derived from internal sequence of Human SYT11.
阳性对照	Extracts from COLO205 cells

#### 性能

形式	Liquid
存放说明	Shipped at 4°C. Store at -20°C. Stable for 12 months at -20°C.
存储溶液	pH: 7.40 Preservative: 0.02% Sodium azide Constituents: PBS, 0.88% Sodium chloride, 50% Glycerol
纯度	Immunogen affinity purified
克隆	多克隆
同种型	IgG

#### 应用

Our [Abpromise guarantee](#) covers the use of **ab110766** in the following tested applications.

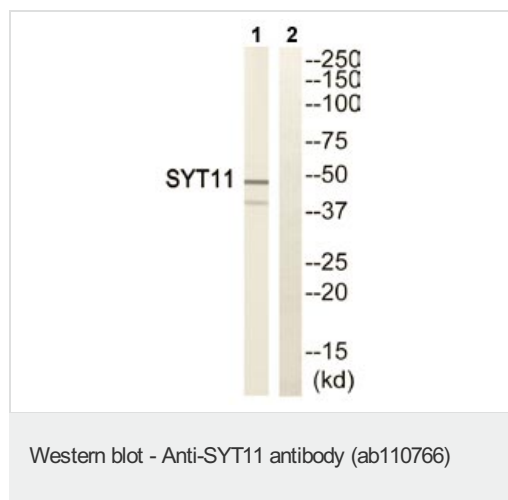
The application notes include recommended starting dilutions; optimal dilutions/concentrations should be determined by the end user.

应用	Ab评论	说明
WB		1/500 - 1/1000. Predicted molecular weight: 48 kDa.

#### 图标

<b>功能</b>	May be involved in Ca(2+)-dependent exocytosis of secretory vesicles through Ca(2+) and phospholipid binding to the C2 domain or may serve as Ca(2+) sensors in the process of vesicular trafficking and exocytosis.
<b>序列相似性</b>	Belongs to the synaptotagmin family. Contains 2 C2 domains.
<b>翻译后修饰</b>	Ubiquitinated and targeted to the proteasome complex for degradation.
<b>细胞定位</b>	Membrane. Cell junction > synapse. Cytoplasmic vesicle > secretory vesicle > synaptic vesicle membrane. In substantia nigra, observed in neuronal cell bodies and neurites. Found in the core of the Lewy bodies in the brain of sporadic Parkinson disease patients.

## 图片



**All lanes :** Anti-SYT11 antibody (ab110766)  
at 1/500 dilution

**Lane 1 :** Extracts from COLO205 cells

**Lane 2 :** Extracts from COLO205 cells with  
immunising peptide at 10 µg

Lysates/proteins at 30 µg per lane.

**Predicted band size:** 48 kDa

**Please note:** All products are "FOR RESEARCH USE ONLY AND ARE NOT INTENDED FOR DIAGNOSTIC OR THERAPEUTIC USE"

## Our Abpromise to you: Quality guaranteed and expert technical support

- Replacement or refund for products not performing as stated on the datasheet
- Valid for 12 months from date of delivery
- Response to your inquiry within 24 hours
- We provide support in Chinese, English, French, German, Japanese and Spanish
- Extensive multi-media technical resources to help you
- We investigate all quality concerns to ensure our products perform to the highest standards

If the product does not perform as described on this datasheet, we will offer a refund or replacement. For full details of the Abpromise, please visit <https://www.abcam.cn/abpromise> or contact our technical team.

## Terms and conditions

- Guarantee only valid for products bought direct from Abcam or one of our authorized distributors