


Product datasheet

Anti-SUGT1 antibody ab104253

2 图像

概述

产品名称	Anti-SUGT1抗体
描述	兔多克隆抗体to SUGT1
宿主	Rabbit
经测试应用	适用于: WB, IP
种属反应性	与反应: Mouse, Human 预测可用于: Sheep, Rabbit, Horse, Guinea pig, Cow, Dog, Pig, Chimpanzee, Rhesus monkey, Gorilla, Orangutan, Elephant 
免疫原	Synthetic peptide, corresponding to a region between amino acids 315-365 of Human SUGT1 (NP_001124384.1).
阳性对照	HeLa, 293T and NIH3T3 whole cell lysates.

性能

形式	Liquid
存放说明	Shipped at 4°C. Upon delivery aliquot and store at -20°C. Avoid freeze / thaw cycles.
存储溶液	Preservative: 0.09% Sodium azide Constituent: Tris citrate/phosphate
纯度	Immunogen affinity purified
克隆	多克隆
同种型	IgG

应用

Our [Abpromise guarantee](#) covers the use of **ab104253** in the following tested applications.

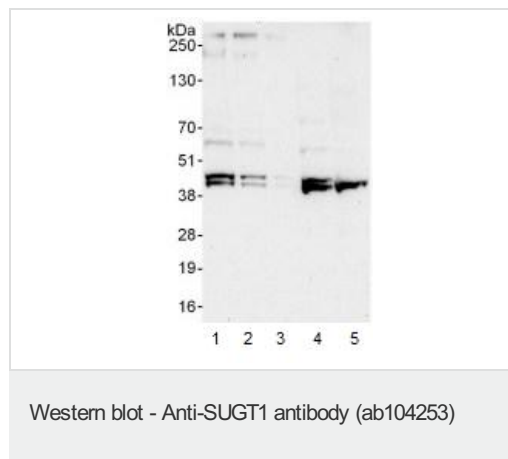
The application notes include recommended starting dilutions; optimal dilutions/concentrations should be determined by the end user.

应用	Ab评论	说明
WB		1/2000 - 1/10000. Predicted molecular weight: 41 kDa.
IP		Use at 2-5 µg/mg of lysate.

靶标

功能	May play a role in ubiquitination and subsequent proteasomal degradation of target proteins.
序列相似性	Belongs to the SGT1 family. Contains 1 CS domain. Contains 1 SGS domain. Contains 3 TPR repeats.
结构域	The CS domain mediates interaction with HSP90.
翻译后修饰	Phosphorylated at Ser-281 and Ser-331, dephosphorylation promotes nuclear translocation, most likely due to disruption of the SUGT1-HSP90 complex.
细胞定位	Cytoplasm. Nucleus. Translocates to the nucleus upon heat shock, requiring S100A6.

图片



All lanes : Anti-SUGT1 antibody (ab104253) at 0.1 µg/ml

Lane 1 : HeLa whole cell line lysate at 50 µg

Lane 2 : HeLa whole cell line lysate at 15 µg

Lane 3 : HeLa whole cell line lysate at 5 µg

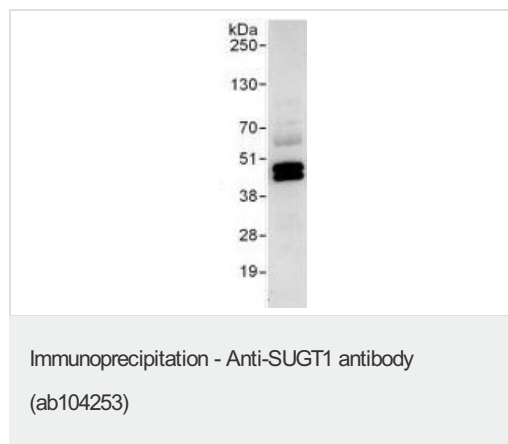
Lane 4 : 293T whole cell line lysate at 50 µg

Lane 5 : NIH3T3 whole cell line lysate at 50 µg

Developed using the ECL technique.

Predicted band size: 41 kDa

Exposure time: 30 seconds



Detection of SUGT1 in Immunoprecipitates of HeLa whole cell lysate (1 mg for IP, 20% of IP loaded) using ab104253 at 3 µg/mg lysate for IP and at 1 µg/ml for subsequent Western blot detection. Detection: Chemiluminescence with an exposure time of 30 seconds.

Please note: All products are "FOR RESEARCH USE ONLY AND ARE NOT INTENDED FOR DIAGNOSTIC OR THERAPEUTIC USE"

Our Abpromise to you: Quality guaranteed and expert technical support

- Replacement or refund for products not performing as stated on the datasheet
- Valid for 12 months from date of delivery
- Response to your inquiry within 24 hours

- We provide support in Chinese, English, French, German, Japanese and Spanish
- Extensive multi-media technical resources to help you
- We investigate all quality concerns to ensure our products perform to the highest standards

If the product does not perform as described on this datasheet, we will offer a refund or replacement. For full details of the Abpromise, please visit <https://www.abcam.cn/abpromise> or contact our technical team.

Terms and conditions

- Guarantee only valid for products bought direct from Abcam or one of our authorized distributors