


Product datasheet

Anti-SR1 antibody ab71983

1 References 2 图像

概述

产品名称	Anti-SR1抗体
描述	兔多克隆抗体to SR1
宿主	Rabbit
经测试应用	适用于: WB, IHC-P, ICC/IF
种属反应性	与反应: Mouse, Rat, Horse, Cow, Dog, Human, Chimpanzee, Monkey 预测可用于: Chicken 
免疫原	Synthetic peptide (Human) sequence is amino acids 50-100 in length from Sorcin. (NP_003121).
阳性对照	Human, mouse and rat brain lysate. Human small intestinal tissue.

性能

形式	Liquid
存放说明	Shipped at 4°C. Store at +4°C short term (1-2 weeks). Upon delivery aliquot. Store at -20°C or -80°C. Avoid freeze / thaw cycle.
存储溶液	Preservative: 0.05% Sodium azide Constituent: PBS
纯度	Immunogen affinity purified
克隆	多克隆
同种型	IgG

应用

Our [Abpromise guarantee](#) covers the use of **ab71983** in the following tested applications.

The application notes include recommended starting dilutions; optimal dilutions/concentrations should be determined by the end user.

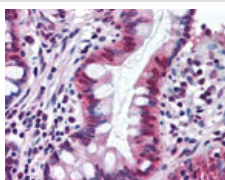
应用	Ab评论	说明
WB		Use a concentration of 0.5 - 2 µg/ml. Detects a band of approximately 22 kDa (predicted molecular weight: 22 kDa).
IHC-P		Use at an assay dependent concentration.

应用	Ab评论	说明
ICC/IF		Use at an assay dependent concentration. PubMed: 24501170

靶标

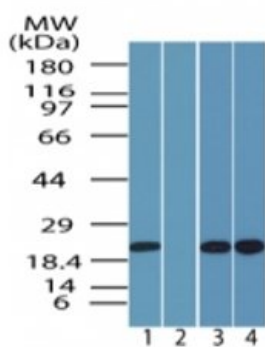
功能	Calcium-binding protein that modulates excitation-contraction coupling in the heart. Contributes to calcium homeostasis in the heart sarcoplasmic reticulum. Modulates the activity of RYR2 calcium channels.
组织特异性	Detected in cardiac myocytes.
序列相似性	Contains 4 EF-hand domains.
细胞定位	Cytoplasm. Sarcoplasmic reticulum membrane. Relocates to the sarcoplasmic reticulum membrane in response to elevated calcium levels.

图片



Paraffin embedded human small intestine tissue immunostained using ab71983 at 10 µg/ml.

Immunohistochemistry (Formalin/PFA-fixed paraffin-embedded sections) - Anti-SR1 antibody (ab71983)



All lanes : Anti-SR1 antibody (ab71983) at 1 µg/ml

Lane 1 : human brain lysate

Lane 2 : human brain lysate with immunising peptide

Lane 3 : mouse brain lysate

Lane 4 : rat brain lysate

Predicted band size: 22 kDa

Observed band size: 22 kDa

Western blot - Anti-SR1 antibody (ab71983)

Please note: All products are "FOR RESEARCH USE ONLY AND ARE NOT INTENDED FOR DIAGNOSTIC OR THERAPEUTIC USE"

Our Promise to you: Quality guaranteed and expert technical support

- Replacement or refund for products not performing as stated on the datasheet
- Valid for 12 months from date of delivery
- Response to your inquiry within 24 hours

- We provide support in Chinese, English, French, German, Japanese and Spanish
- Extensive multi-media technical resources to help you
- We investigate all quality concerns to ensure our products perform to the highest standards

If the product does not perform as described on this datasheet, we will offer a refund or replacement. For full details of the Abpromise, please visit <https://www.abcam.cn/abpromise> or contact our technical team.

Terms and conditions

- Guarantee only valid for products bought direct from Abcam or one of our authorized distributors