

Product datasheet

Anti-SLC16A12 antibody ab105834

1 图像

概述

产品名称	Anti-SLC16A12抗体
描述	兔多克隆抗体to SLC16A12
宿主	Rabbit
经测试应用	适用于: WB
种属反应性	与反应: Human 预测可用于: Mouse, Rat, Rabbit, Horse, Guinea pig, Cow, Cat, Dog
免疫原	Synthetic peptide corresponding to a region within N terminal amino acids 49-98 (WMIVAGCFLV TICTRAVTRC ISIFFVEFQT YFTQDYAQTA WIHSIVDCVT) of Human SLC16A12 (NP_998771). Run BLAST with ExPASy Run BLAST with NCBI
阳性对照	Jurkat cell lysate

性能

形式	Liquid
存放说明	Shipped at 4°C. Upon delivery aliquot and store at -20°C. Avoid repeated freeze / thaw cycles.
存储溶液	Preservative: 0.09% Sodium azide Constituents: 2% Sucrose, PBS
纯度	Immunogen affinity purified
克隆	多克隆
同种型	IgG

应用

Our [Abpromise guarantee](#) covers the use of **ab105834** in the following tested applications.

The application notes include recommended starting dilutions; optimal dilutions/concentrations should be determined by the end user.

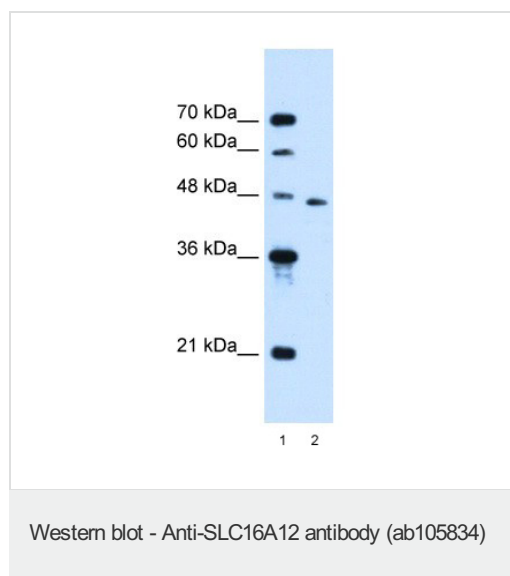
应用	Ab评论	说明

应用	Ab评论	说明
WB		Use a concentration of 0.5 µg/ml. Predicted molecular weight: 53 kDa. Good results were obtained when blocked with 5% non-fat dry milk in 0.05% PBS-T.

靶标

功能	Proton-linked monocarboxylate transporter. Catalyzes the rapid transport across the plasma membrane of many monocarboxylates.
组织特异性	Most highly expressed in kidney, followed by retina, lung, and testis. Very weakly expressed in brain and liver. Also detected in lens.
疾病相关	Defects in SLC16A12 are a cause of cataract juvenile with microcornea and glucosuria (CJMG) [MIM:612018]. Renal glucosuria is defined by elevated glucose level in the urine without hyperglycemia and without evidence of morphological renal anomalies.
序列相似性	Belongs to the major facilitator superfamily. Monocarboxylate porter (TC 2.A.1.13) family.
细胞定位	Cell membrane.

图片



All lanes : Anti-SLC16A12 antibody (ab105834) at 0.5 µg/ml

Lane 1 : MW marker

Lane 2 : Jurkat cell lysate at 10 µg

Predicted band size: 53 kDa

Gel concentration: 12%

Please note: All products are "FOR RESEARCH USE ONLY AND ARE NOT INTENDED FOR DIAGNOSTIC OR THERAPEUTIC USE"

Our Abpromise to you: Quality guaranteed and expert technical support

- Replacement or refund for products not performing as stated on the datasheet
- Valid for 12 months from date of delivery
- Response to your inquiry within 24 hours
- We provide support in Chinese, English, French, German, Japanese and Spanish

- Extensive multi-media technical resources to help you
- We investigate all quality concerns to ensure our products perform to the highest standards

If the product does not perform as described on this datasheet, we will offer a refund or replacement. For full details of the Abpromise, please visit <https://www.abcam.cn/abpromise> or contact our technical team.

Terms and conditions

- Guarantee only valid for products bought direct from Abcam or one of our authorized distributors