

Product datasheet

Anti-SHOX2 antibody ab82918

★★★★☆ 1 Abreviews 2 图像

概述

产品名称	Anti-SHOX2抗体
描述	兔多克隆抗体to SHOX2
宿主	Rabbit
经测试应用	适用于: WB, ELISA
种属反应性	与反应: Human, Zebrafish 预测可用于: Mouse, Rat, Rabbit, Horse, Chicken, Guinea pig, Cow, Cat, Dog
免疫原	Synthetic peptide, corresponding to a region within internal sequence amino acids 179 - 228 (SEARVQVWFQNRRAKCRKQENQLHKGVFLIGAASQFEACRVAPYVNVGAL R) of Human SHOX2, (NP_006875)
阳性对照	721_B cell lysate

性能

形式	Liquid
存放说明	Shipped at 4°C. Upon delivery aliquot and store at -20°C or -80°C. Avoid repeated freeze / thaw cycles.
存储溶液	Preservative: 0.09% Sodium azide Constituents: 2% Sucrose, PBS
纯度	Immunogen affinity purified
克隆	多克隆
同种型	IgG

应用

Our [Abpromise guarantee](#) covers the use of **ab82918** in the following tested applications.

The application notes include recommended starting dilutions; optimal dilutions/concentrations should be determined by the end user.

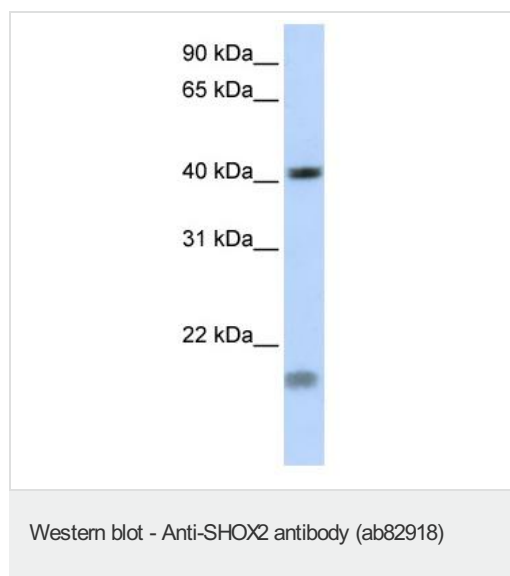
应用	Ab评论	说明
WB	★★★★☆	Use a concentration of 1 µg/ml. Predicted molecular weight: 35 kDa.Can be blocked with Human SHOX2 peptide (ab105429) . Good results were obtained when blocked with 5% non-fat dry milk in 0.05% PBS-T.

应用	Ab评论	说明
ELISA		Use at an assay dependent concentration. ELISA titre using peptide based assay: 1/62500.

靶标

功能	May be a growth regulator and have a role in specifying neural systems involved in processing somatosensory information, as well as in face and body structure formation.
组织特异性	Expressed in heart, skeletal muscle, liver, lung, bone marrow fibroblast, pancreas and placenta.
序列相似性	Belongs to the paired homeobox family. Bicoid subfamily. Contains 1 homeobox DNA-binding domain.
发展阶段	Expressed during cranofacial development as well as in heart.
细胞定位	Nucleus.

图片



Anti-SHOX2 antibody (ab82918) at 1 µg/ml + 721_B cell lysate at 10 µg

Secondary

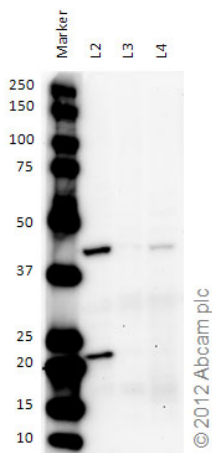
HRP conjugated anti-Rabbit IgG at 1/50000 dilution

Predicted band size: 35 kDa

Observed band size: 40 kDa

[why is the actual band size different from the predicted?](#)

Additional bands at: 20 kDa. We are unsure as to the identity of these extra bands.



Western blot - Anti-SHOX2 antibody (ab82918)

All lanes : Anti-SHOX2 antibody (ab82918) at 1 µg/ml

Lane 1 : Marker

Lane 2 : Zebrafish brain homogenate at 20 µg

Lane 3 : Zebrafish heart homogenate at 20 µg

Lane 4 : Zebrafish liver homogenate at 20 µg

Secondary

All lanes : Goat polyclonal to Rabbit IgG – H&L – Pre-Adsorbed (HRP) at 1/6000 dilution

Developed using the ECL technique.

Performed under reducing conditions.

Predicted band size: 35 kDa

Observed band size: 41 kDa [why is the actual band size different from the predicted?](#)

Exposure time: 5 minutes

Please note: All products are "FOR RESEARCH USE ONLY AND ARE NOT INTENDED FOR DIAGNOSTIC OR THERAPEUTIC USE"

Our Abpromise to you: Quality guaranteed and expert technical support

- Replacement or refund for products not performing as stated on the datasheet
- Valid for 12 months from date of delivery
- Response to your inquiry within 24 hours
- We provide support in Chinese, English, French, German, Japanese and Spanish
- Extensive multi-media technical resources to help you
- We investigate all quality concerns to ensure our products perform to the highest standards

If the product does not perform as described on this datasheet, we will offer a refund or replacement. For full details of the Abpromise, please visit <https://www.abcam.cn/abpromise> or contact our technical team.

Terms and conditions

- Guarantee only valid for products bought direct from Abcam or one of our authorized distributors