


Product datasheet

Anti-SAFB antibody ab84378

2 图像

概述

产品名称	Anti-SAFB抗体
描述	兔多克隆抗体to SAFB
宿主	Rabbit
经测试应用	适用于: IHC-P
种属反应性	与反应: Mouse, Human 预测可用于: Rabbit, Chimpanzee, Rhesus monkey, Gorilla, Chinese hamster, Orangutan 
免疫原	Synthetic peptide, corresponding to a region within residues 875 and the C-terminus (residue 915) of human SAFB (NP_002958.2).
阳性对照	Human breast adenocarcinoma. Mouse squamous cell carcinoma.

性能

形式	Liquid
存放说明	Shipped at 4°C. Upon delivery aliquot and store at -20°C. Avoid freeze / thaw cycles.
存储溶液	Preservative: 0.09% Sodium azide Constituents: 0.1% BSA, Tris buffered saline
纯度	Immunogen affinity purified
克隆	多克隆
同种型	IgG

应用

Our [Abpromise guarantee](#) covers the use of **ab84378** in the following tested applications.

The application notes include recommended starting dilutions; optimal dilutions/concentrations should be determined by the end user.

应用	Ab评论	说明
----	------	----

IHC-P

应用说明	IHC-P: 1/100 - 1/500. Antigen exposure is recommended. Antigen exposure with citrate buffer will enhance staining.
------	--

Not yet tested in other applications.

Optimal dilutions/concentrations should be determined by the end user.

靶标

功能

Binds to scaffold/matrix attachment region (S/MAR) DNA and forms a molecular assembly point to allow the formation of a 'transcriptosomal' complex (consisting of SR proteins and RNA polymerase II) coupling transcription and RNA processing (By similarity). Can function as an estrogen receptor corepressor and can also bind to the HSP27 promoter and decrease its transcription. Can inhibit cell proliferation.

组织特异性

Ubiquitous. Expressed at high levels in the CNS and at low levels in the liver. Expressed in a wide number of breast cancer cell lines.

序列相似性

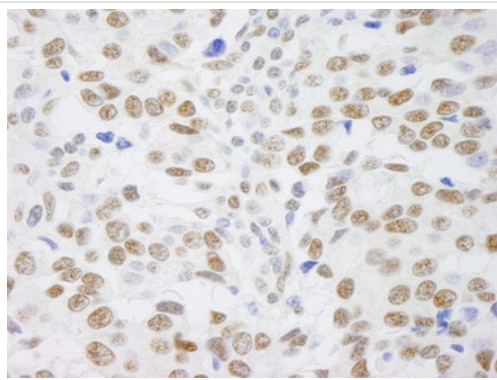
Contains 1 RRM (RNA recognition motif) domain.

Contains 1 SAP domain.

细胞定位

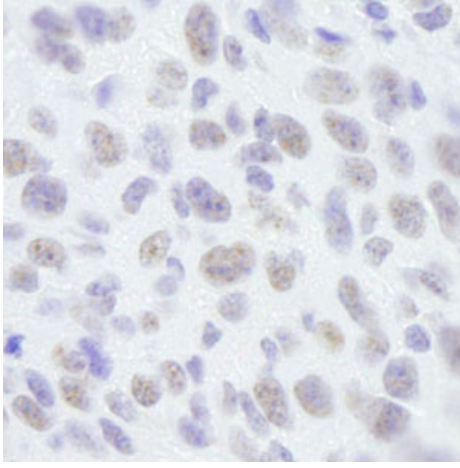
Nucleus.

图片



ab84378 at 1/250, staining human SAFB in a section of human breast adenocarcinoma by immunohistochemistry (Formalin/PFA-fixed paraffin-embedded sections).

Immunohistochemistry (Formalin/PFA-fixed paraffin-embedded sections) - Anti-SAFB antibody (ab84378)



ab84378 at 1/250 dilution, staining SAFB in FFPE section of mouse squamous cell carcinoma, by immunohistochemistry (formalin/PFA-fixed paraffin-embedded sections)

Immunohistochemistry (Formalin/PFA-fixed paraffin-embedded sections) - Anti-SAFB antibody (ab84378)

Please note: All products are "FOR RESEARCH USE ONLY AND ARE NOT INTENDED FOR DIAGNOSTIC OR THERAPEUTIC USE"

Our Abpromise to you: Quality guaranteed and expert technical support

- Replacement or refund for products not performing as stated on the datasheet
- Valid for 12 months from date of delivery
- Response to your inquiry within 24 hours
- We provide support in Chinese, English, French, German, Japanese and Spanish
- Extensive multi-media technical resources to help you
- We investigate all quality concerns to ensure our products perform to the highest standards

If the product does not perform as described on this datasheet, we will offer a refund or replacement. For full details of the Abpromise, please visit <https://www.abcam.cn/abpromise> or contact our technical team.

Terms and conditions

- Guarantee only valid for products bought direct from Abcam or one of our authorized distributors