

Recombinant Human Sarcomeric Alpha Actinin protein ab92234

1 图像

概述

产品名称	重组人Sarcomeric Alpha Actinin蛋白
蛋白长度	Protein fragment

描述

性质	Recombinant
来源	Escherichia coli

氨基酸序列

种属	Human
序列	<p>QAETAANRICKVLAVNQENERLMEEYERLASELLEWIRRTIPWLENRTPE KTM QAMQKKLEDFRDYRRKHKPPKVQEKCLEINFNTLQTKLRISNRP AFMPSEGK MVSDIAGAWQRLEQAEGYEEWLLNEIRRLERLEHLAEKF RQKASTHETWAYG KEQILLQKDYESASLTEVRALLRKHEAFESDLAAH QDRVEQIAAIAQELNELD YHDAVNVNDRQCQICDQWDRLGTLTQKRRE ALERMEKLLLETIDQLHLEFAKRA APFNNWMEGAMEDLQDMFIVHSIEE IQSLITAHEQFKATLPEADGERQSIMAI QNEVEKVIQSYNIRISSNP YSTVTMDELRTKWDKVKQLVPIRDQSLQEELAR QHANERLRRQFAAQA NAIGPWIQNKMEEIARSSIQITGALEDQMNQLKQYEHN IINYKNNIDK LEGDHLIQEALVFDNKHTNYTMEHIRVWELLLTTIARTINE VETQI LTRDAKGITQEQMNEFRASFNHFDRRKNGLMDHEDFRACLISMGYDLG EAEFARIMTLVDPNGQGTVTQSFIDFMTRETADTDTAEQVIASFRILAS DKP YILAEELRRELPPDQAQYCIKRMPAYSGPGSVPGALDYAAFSS</p>

氨基酸	261 to 886
-----	------------

技术指标

Our [Abpromise guarantee](#) covers the use of **ab92234** in the following tested applications.

The application notes include recommended starting dilutions; optimal dilutions/concentrations should be determined by the end user.

应用 SDS-PAGE

形式 Lyophilised

制备和贮存

稳定性和存储 Shipped at 4°C. Upon delivery aliquot and store at -80°C. Avoid freeze / thaw cycles.

pH: 4.50

Constituents: 0.5% Trehalose, 36% Urea, 1.64% Sodium phosphate, 0.058% Sodium chloride

复溶 Reconstitution with 136 µl aqua dest.

常规信息

功能 F-actin cross-linking protein which is thought to anchor actin to a variety of intracellular structures. This is a bundling protein.

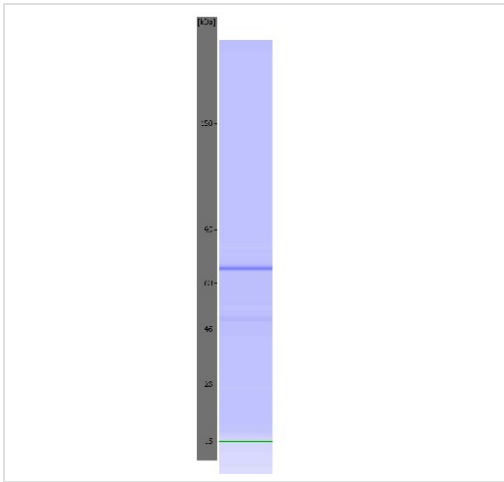
组织特异性 Expressed in both skeletal and cardiac muscle.

疾病相关 Defects in ACTN2 are the cause of cardiomyopathy dilated type 1AA (CMD1AA) [MIM:612158]. Dilated cardiomyopathy is a disorder characterized by ventricular dilation and impaired systolic function, resulting in congestive heart failure and arrhythmia. Patients are at risk of premature death.

序列相似性 Belongs to the alpha-actinin family.
Contains 1 actin-binding domain.
Contains 2 CH (calponin-homology) domains.
Contains 2 EF-hand domains.
Contains 4 spectrin repeats.

细胞定位 Cytoplasm > myofibril > sarcomere > Z line. Colocalizes with MYOZ1 and FLNC at the Z-lines of skeletal muscle.

图片



SDS-PAGE - Recombinant Human Sarcomeric
Alpha Actinin protein (ab92234)

The image shows an electrophoretic assay performed using an Agilent 5100 ALP. In some images coloured control bands can be seen at 15 kDa (green) and/or 240 kDa (purple). The protein-specific band is blue.

Please note: All products are "FOR RESEARCH USE ONLY AND ARE NOT INTENDED FOR DIAGNOSTIC OR THERAPEUTIC USE"

Our Abpromise to you: Quality guaranteed and expert technical support

- Replacement or refund for products not performing as stated on the datasheet
- Valid for 12 months from date of delivery
- Response to your inquiry within 24 hours
- We provide support in Chinese, English, French, German, Japanese and Spanish
- Extensive multi-media technical resources to help you
- We investigate all quality concerns to ensure our products perform to the highest standards

If the product does not perform as described on this datasheet, we will offer a refund or replacement. For full details of the Abpromise, please visit <https://www.abcam.cn/abpromise> or contact our technical team.

Terms and conditions

- Guarantee only valid for products bought direct from Abcam or one of our authorized distributors