

Product datasheet

Recombinant Human GPCR GPR12 protein ab116876

1 图像

概述

产品名称	重组人GPCR GPR12蛋白
蛋白长度	Full length protein

描述

性质	Recombinant
来源	Wheat germ
氨基酸序列	
Accession	<a href="#">P47775</a>
种属	Human
序列	<p>MNEDLKVNL SGLPRDYLDAAA AENISAAVSSRVP AVEPEP            ELVVNPWDIV            LCTSGTLISCENAI VVLIIFHNPSLRAPM FLLIGSLALAD            LLAGIGLITN            FVFAYLLQSEATKLVTIGLIVASF SASVCSLLAITVD RYL            SLYYALTYHS            ERTVTFTYVMLV MLWGTSICLGLLPVMGWNCLRDESTCSV            VRPLTKNNA A            ILSVSFLFMFALML QLYIQICKIVMRHAHQIALQH HFLAT            SHYVTTRKGV            STLAIILGTFAACW MPFTLYSLIADYTYP SIYTYATLLPA            TYNSIINPVI            YA FRNQEIQKALCLICCGCIPSSLAQRARSPSDV</p>
分子量	63 kDa including tags
氨基酸	1 to 334

技术指标

Our [Abpromise guarantee](#) covers the use of **ab116876** in the following tested applications.

The application notes include recommended starting dilutions; optimal dilutions/concentrations should be determined by the end user.

应用	ELISA
	SDS-PAGE
	Western blot

形式	Liquid
补充说明	Protein concentration is above or equal to 0.05 mg/ml. Best used within three months from the date of receipt.

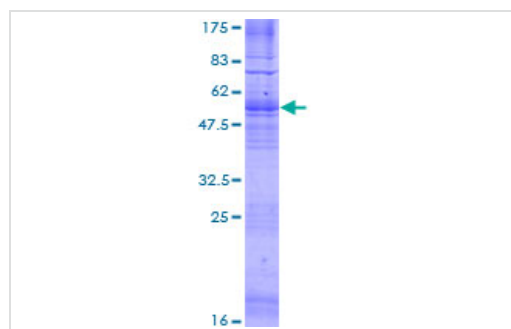
## 制备和贮存

稳定性和存储	Shipped on dry ice. Upon delivery aliquot and store at -80°C. Avoid freeze / thaw cycles. pH: 8.00 Constituents: 0.3% Glutathione, 0.79% Tris HCl
--------	---

## 常规信息

功能	Promotes neurite outgrowth and blocks myelin inhibition in neurons (By similarity). Receptor with constitutive G(s) signaling activity that stimulates cyclic AMP production.
序列相似性	Belongs to the G-protein coupled receptor 1 family.
细胞定位	Cell membrane.

## 图片



12.5% SDS-PAGE showing ab116876 at approximately 62.81kDa stained with Coomassie Blue.

SDS-PAGE - Recombinant Human GPCR GPR12 protein (ab116876)

**Please note:** All products are "FOR RESEARCH USE ONLY AND ARE NOT INTENDED FOR DIAGNOSTIC OR THERAPEUTIC USE"

## Our Abpromise to you: Quality guaranteed and expert technical support

- Replacement or refund for products not performing as stated on the datasheet
- Valid for 12 months from date of delivery
- Response to your inquiry within 24 hours
- We provide support in Chinese, English, French, German, Japanese and Spanish
- Extensive multi-media technical resources to help you
- We investigate all quality concerns to ensure our products perform to the highest standards

If the product does not perform as described on this datasheet, we will offer a refund or replacement. For full details of the Abpromise, please visit <https://www.abcam.cn/abpromise> or contact our technical team.

## Terms and conditions

---

- Guarantee only valid for products bought direct from Abcam or one of our authorized distributors