

Product datasheet

Recombinant Human Emerin protein ab112283

1 图像

概述

产品名称	重组人Emerin蛋白
蛋白长度	Full length protein

描述

性质	Recombinant
来源	Wheat germ
氨基酸序列	
Accession	P50402
种属	Human
分子量	54 kDa including tags
氨基酸	1 to 254

技术指标

Our [Abpromise guarantee](#) covers the use of **ab112283** in the following tested applications.

The application notes include recommended starting dilutions; optimal dilutions/concentrations should be determined by the end user.

生物活性	useful for Antibody Production and Protein Array
应用	Western blot ELISA Peptide Array SDS-PAGE
形式	Liquid
补充说明	Best use within three months from the date of receipt of this protein.useful for Antibody Production and Protein Array

制备和贮存

稳定性和存储	Shipped on dry ice. Upon delivery aliquot and store at -80°C. Avoid freeze / thaw cycles. pH: 8.00
--------	---

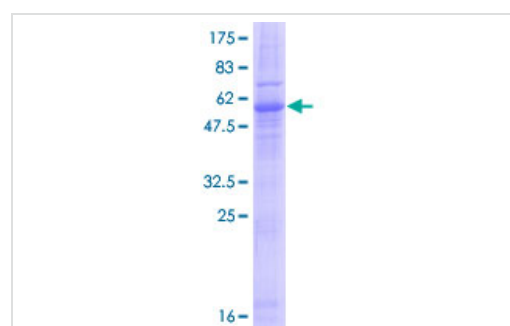
Constituents: 0.79% Tris HCl, 0.31% Glutathione

Note: Reduced glutathione

常规信息

功能	Stabilizes and promotes the formation of a nuclear actin cortical network. Stimulates actin polymerization in vitro by binding and stabilizing the pointed end of growing filaments. Inhibits beta-catenin activity by preventing its accumulation in the nucleus. Acts by influencing the nuclear accumulation of beta-catenin through a CRM1-dependent export pathway. Links centrosomes to the nuclear envelope via a microtubule association. EMD and BAF are cooperative cofactors of HIV-1 infection. Association of EMD with the viral DNA requires the presence of BAF and viral integrase. The association of viral DNA with chromatin requires the presence of BAF and EMD. Required for proper localization of non-farnesylated prelamins A/C.
组织特异性	Skeletal muscle, heart, colon, testis, ovary and pancreas.
疾病相关	Defects in EMD are the cause of Emery-Dreifuss muscular dystrophy type 1 (EDMD1) [MIM:310300]. A degenerative myopathy characterized by weakness and atrophy of muscle without involvement of the nervous system, early contractures of the elbows Achilles tendons and spine, and cardiomyopathy associated with cardiac conduction defects.
序列相似性	Contains 1 LEM domain.
翻译后修饰	Found in four different phosphorylated forms, three of which appear to be associated with the cell cycle.
细胞定位	Nucleus inner membrane. Nucleus outer membrane. Colocalized with BANF1 at the central region of the assembling nuclear rim, near spindle-attachment sites. The accumulation of different intermediates of prelamins A/C (non-farnesylated or carboxymethylated farnesylated prelamins A/C) in fibroblasts modify its localization in the nucleus.

图片



SDS-PAGE - Recombinant Human Emerin protein
(ab112283)

12.5% SDS-PAGE Stained with Coomassie
Blue with proprietary tag.

Please note: All products are "FOR RESEARCH USE ONLY AND ARE NOT INTENDED FOR DIAGNOSTIC OR THERAPEUTIC USE"

Our Abpromise to you: Quality guaranteed and expert technical support

- Replacement or refund for products not performing as stated on the datasheet

- Valid for 12 months from date of delivery
- Response to your inquiry within 24 hours

- We provide support in Chinese, English, French, German, Japanese and Spanish
- Extensive multi-media technical resources to help you
- We investigate all quality concerns to ensure our products perform to the highest standards

If the product does not perform as described on this datasheet, we will offer a refund or replacement. For full details of the Abpromise, please visit <https://www.abcam.cn/abpromise> or contact our technical team.

Terms and conditions

- Guarantee only valid for products bought direct from Abcam or one of our authorized distributors