

## Product datasheet

# Anti-RPS6 (phospho S235 + S236) antibody ab65750

### 1 图像

#### 概述

<b>产品名称</b>	Anti-RPS6 (phospho S235 + S236)抗体
<b>描述</b>	羊多克隆抗体to RPS6 (phospho S235 + S236)
<b>宿主</b>	Sheep
<b>经测试应用</b>	<b>适用于:</b> WB
<b>种属反应性</b>	<b>与反应:</b> Mouse, Human <b>预测可用于:</b> Rat, Chicken, Cow, Xenopus laevis, Cynomolgus monkey
<b>免疫原</b>	Synthetic peptide: CAKRRRLS <sup>P</sup> S <sup>P</sup> LRA conjugated to KLH, corresponding to C terminal amino acids 229-239 of Human RPS6 <a href="#">Run BLAST with</a> <a href="#">Run BLAST with</a>
<b>阳性对照</b>	Raji cells untreated, or treated with 10 µg/ml S6 inhibitor for 30 min.

#### 性能

<b>形式</b>	Liquid
<b>存放说明</b>	Shipped at 4°C. Store at +4°C short term (1-2 weeks). Store at -20°C or -80°C. Avoid freeze / thaw cycle.
<b>存储溶液</b>	pH: 7.50 Preservative: 0.05% Sodium azide Constituents: 0.238% HEPES, 0.87% Sodium chloride
<b>纯度</b>	Immunogen affinity purified
<b>克隆</b>	多克隆
<b>同种型</b>	IgG

#### 应用

Our [Abpromise guarantee](#) covers the use of **ab65750** in the following tested applications.

The application notes include recommended starting dilutions; optimal dilutions/concentrations should be determined by the end user.

应用	Ab评论	说明
WB		Use a concentration of 2 µg/ml. Detects a band of approximately 30 kDa (predicted molecular weight: 30 kDa).

## 靶标

### 功能

May play an important role in controlling cell growth and proliferation through the selective translation of particular classes of mRNA.

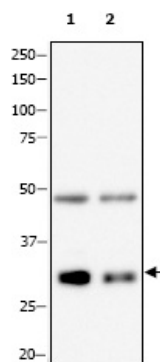
### 序列相似性

Belongs to the ribosomal protein S6e family.

### 翻译后修饰

Ribosomal protein S6 is the major substrate of protein kinases in eukaryote ribosomes. The phosphorylation is stimulated by growth factors, tumor promoting agents, and mitogens. It is dephosphorylated at growth arrest.

## 图片



Western blot - Anti-RPS6 (phospho S235 + S236) antibody (ab65750)

**All lanes :** Anti-RPS6 (phospho S235 + S236) antibody (ab65750) at 2 µg/ml

**Lane 1 :** Raji cell extracts, untreated

**Lane 2 :** Raji cell extracts, treated with 10 µg/ml S6 inhibitor for 30 min

**Predicted band size:** 30 kDa

**Observed band size:** 30 kDa

**Additional bands at:** 48 kDa. We are unsure as to the identity of these extra bands.

**Please note:** All products are "FOR RESEARCH USE ONLY AND ARE NOT INTENDED FOR DIAGNOSTIC OR THERAPEUTIC USE"

## Our Abpromise to you: Quality guaranteed and expert technical support

- Replacement or refund for products not performing as stated on the datasheet
- Valid for 12 months from date of delivery
- Response to your inquiry within 24 hours
- We provide support in Chinese, English, French, German, Japanese and Spanish
- Extensive multi-media technical resources to help you
- We investigate all quality concerns to ensure our products perform to the highest standards

If the product does not perform as described on this datasheet, we will offer a refund or replacement. For full details of the Abpromise, please visit <https://www.abcam.cn/abpromise> or contact our technical team.

## Terms and conditions

- Guarantee only valid for products bought direct from Abcam or one of our authorized distributors